



Bryn Mawr Presbyterian Church

July 14, 2019
8:00 a.m., Chapel
Fifteenth Sunday in Ordinary Time

WELCOME TO BMPC

TODAY'S SCHEDULE

Childcare (infant - age 5)

7:45 a.m. - 12:30 p.m.
Fullerton Room,
Ministries Center

8:00 a.m. Worship, Chapel

Summer Choir Rehearsal

9:00 a.m., Sanctuary Choir Loft

10:00 a.m. Worship, Sanctuary

Youth in Worship

10:15 a.m., Summer Sunday School,
for Grades PreK - 3
Gloucester Room, Ministries Center

*See calendar at back of bulletin for
a complete schedule.*

NEW HERE? We are pleased that you are joining us as we worship God this morning. Information about our programs is available near the main entrance. We invite you to participate in any of our programs, ministries and mission opportunities, as they are open to all.

JOIN US FOR FELLOWSHIP. Stop by the Ministries Center Court for coffee between 8:00 - 10:00 a.m. and join us for Lemonade on the Lawn after the 10:00 a.m. worship service (rain location: Ministries Center Court).

TO ASSIST YOU DURING WORSHIP. Children's bulletins with crayons may be found near the main entrance. If you are unable to come forward for Communion, please let an usher or server know, and Communion will be brought to you.

Subscribe to our BMPC eNews by adding your email address to the Fellowship Register. For additional information about today's schedule, see the calendar at the back of this bulletin.

www.BMPC.org

GATHERING AROUND THE WORD

PRELUDE

WELCOME

Rebecca Kirkpatrick

† CALL TO WORSHIP

One: Rejoice with me, people of God.

All: From all places, God has gathered us here.

One: Rejoice with me, people of God;

All: For the Spirit moves to make us one.

One: Rejoice with me, people of God.

All: We who were once far off have been brought home.

One: Rejoice with me and worship the Lord.

† HYMN 475

Come, Thou Fount of Every Blessing

NETTLETON

CALL TO CONFESSION

AND PRAYER OF CONFESSION *(in unison)*

Merciful God, you have formed us in your image,
with a mind to know you,
a heart to love you,
and a will to serve you.

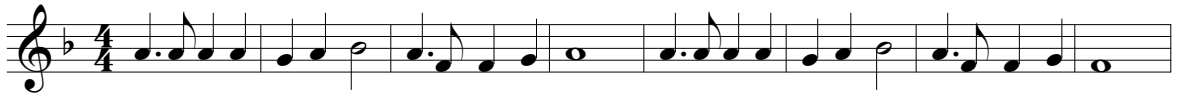
Forgive us the sins that make our knowledge imperfect,
our love inconsistent,
and our obedience incomplete.

Look upon us with kindness and help us grow in your likeness and in your love.

A moment of silence for personal reflection and confession.

ASSURANCE OF PARDON

CONGREGATIONAL RESPONSE



Spir-it of the liv-ing God, fall a-fresh on me. Spir-it of the liv-ing God, fall a-fresh on me.



Melt me; mold me; fill me; use me. Spir-it of the liv-ing God, fall a-fresh on me.

Text and Music © 1935 Birdwing Music (admin. EMICMGPublishing.com). All rights reserved.
Reprinted under OneLicense.net #A-716211.

HEARING THE WORD

PRAYER FOR ILLUMINATION

Cathy Whiteside

FIRST LESSON

Matthew 5:13-20 (*p. 4 in pew Bible*)

Cathy Whiteside

SECOND LESSON

Genesis 18:16-33 (*p. 14 in pew Bible*)

Rachel Pedersen

One: The Word of the Lord.

All: **Thanks be to God.**

SERMON

The Promotion of Social Righteousness
Summer Sermon Series on *The Great Ends of the Church*

Rachel Pedersen

† **HYMN 691**

Lord, When I Came into This Life

LAND OF REST

RESPONSE TO THE WORD

THE SACRAMENT OF THE LORD'S SUPPER

Rebecca Kirkpatrick

You are invited to come forward, using the center aisle, to partake of the Lord's Supper by intinction (dipping a piece of bread into the cup); return to your seat using the side aisle. Gluten and casein-free elements are on the center table.

You are invited to bring your offering when you come forward.

THE INVITATION TO COMMUNION AND THE GREAT THANKSGIVING

One: The Lord be with you.

All: And also with you.

One: Lift up your hearts.

All: We lift them to the Lord.

One: Let us give thanks to the Lord our God.

All: It is right to give our thanks and praise.

THE LORD'S PRAYER

Our Father who art in heaven, hallowed be thy name, thy kingdom come, thy will be done, on earth as it is in heaven. Give us this day our daily bread. And forgive us our trespasses, as we forgive those who trespass against us. And lead us not into temptation, but deliver us from evil. For thine is the kingdom, and the power, and the glory, forever. Amen.

COMMUNION OF THE PEOPLE

PRAYER OF DEDICATION

Rachel Pedersen

† HYMN 744

Arise, Your Light Is Come!

FESTAL SONG

† SENDING AND PASSING OF THE PEACE

One: The peace of Christ be with you.

All: And also with you.

POSTLUDE

Worship Notes

SANCTUARY FLOWERS

Given to the glory of God and in loving memory of
Allen F. Korfmacher
Joseph and Pauline Petrovitch

RECEIVING THE SACRAMENT OF BAPTISM

at 10:00 am Service

Forest Alexander McGrath, son of Daria Babushok & James McGrath
Evelyn Jane Penick, daughter of Emily & Chris Penick
Thomas Grady Shane (Grady), son of Caroline Cuckler Shane & Patrick Shane

ASSISTING WITH COMMUNION

Elder Cathy Whiteside

USHERING

Elder Keith Brinks

SUMMER SERMON SERIES

The Great Ends of the Church, written in 1910, provide a concise formulation of how we as Presbyterians understand our mission as a church;
the proclamation of the gospel for the salvation of humankind;
the shelter, nurture, and spiritual fellowship of the children of God;
the maintenance of divine worship;
the preservation of the truth;
the promotion of social righteousness;
the exhibition of the Kingdom of Heaven to the world.

BULLETIN COVER

Service Window, Chapel ~ Joseph Elliott, Photographer

†

"I am the resurrection and the life."

Keith Weaver ~ July 9, 2019

Announcements

SABBATICAL REMINDER. The Reverend Agnes W. Norfleet is on Sabbatical Leave until September 3.

SUMMER WEEKEND FOOD DONATIONS. BMPC is one of three food collection sites for the Community Partners of Lower Merion and Narberth, an organization that assists those in need during the summer months when food donations are at their lowest. Canned tuna, macaroni and cheese, granola bars, applesauce cups, bananas and apples are just a few of the items needed. Collection bins are in the Ministries Center.

HOW MANY BMPC AUTHORS? Through the years, our congregation has included a number of published authors. Do you know how many? Win a free book of your choice by guessing how many books have been written by BMPC authors. Or win two free books by guessing how many books by BMPC authors are in the Converse House Library! Kat MacMurray, katrmac2@icloud.com.

Today

SUMMER CHOIR. All singers are invited to come to church on Sundays at 9:00 a.m. for a short rehearsal in the choir loft, then stay and sing for the 10:00 a.m. service. Summer choir is simple (one anthem and hymns), and informal (no robes). No long-term commitment, no need to sign up in advance. This is a great opportunity to lend your voice to worship and give choir a try. StephanieSpeakman@bmpc.org.

Upcoming

SUMMER PREACHING SERIES: CHILDREN OF THE CHURCH. This summer we welcome four preachers who grew up calling BMPC home and have pursued ordination in the Presbyterian Church (U.S.A.). The schedule is as follows: Paul Watermulder, July 28; Graham Robinson, August 4; Courtenay Willcox, August 11; and Crawford Brubaker, August 18.

CAMP KIRKWOOD. Aug. 4-10. Don't miss out on a fun and inspirational week at Camp Kirkwood! Leigh DeVries, our new Associate Pastor for Youth and Their Families, is leading a caring team of BMPC staff and volunteer leaders during this sleep-away experience in the Poconos. Bring a friend with you to Camp Kirkwood! Camp provides an opportunity for youth at all levels of church involvement to build lifelong relationships, experience the joy of the outdoors, and ask bold questions about life and faith in a supportive environment. Register now: \$499. Full and partial scholarships available for all youth. AmyBauer@bmpc.org.

Caring & Sharing

HELP A CHILD HAVE A GREAT START TO THE SCHOOL YEAR! Partnering with theVillage, BMPC is providing more than 50 children in the foster care system with backpacks and school supplies to begin the new year. You can fill a backpack on your own; labels and lists are available in the Narthex. You also may purchase supplies through Amazon: <http://bit.ly/BMPCBackpacks> or you can contact Rachel Pedersen, RachelPedersen@bmpc.org, for a list of additional supplies needed.

BATTERY RECYCLING. The Environmental Justice Committee covers the cost of sending batteries for recycling, so bring your dead batteries to the Ministries Center and put them in the container on the bottom shelf of the bookcase next to the Reception Desk. Hint: You can reduce your need to discard single-use batteries by purchasing rechargeable batteries. These can be used more than 1,000 times and recycled at no cost to you.

HUNGER DONATIONS. Baskets for donations of food are located in the Narthex. Donations tend to drop off in the summer when the need for food increases. High protein soups and canned goods are needed. To make financial donations to the Hunger Committee for the support of area food cupboards and shelters, use the white Hunger Envelopes in the pew holders or note "Hunger" on the memo line of your check.

This Week's Calendar

*For more information, visit our website at www.bmpc.org,
call the church office, or contact communications@bmpc.org.*

Today, July 14

- 7:45 a.m. Childcare, Fullerton Room
8:00 a.m. **Worship with Communion, Chapel**
9:00 a.m. Summer Choir Rehearsal, Sanctuary Choir Loft
10:00 a.m. **Worship with Baptisms and Summer Choir, Sanctuary**
Grades PreK - 3 Begin Worship in the Sanctuary
Worship Together Sunday for Children & Youth in Grades 4 - 12
10:15 a.m. Summer Sunday School for Grades PreK - 3, Gloucester Room
11:00 a.m. Lemonade on the Lawn, Front Lawn

Monday, July 15

No scheduled activities.

Tuesday, July 16

- 10:30 a.m. Tai Chi, Gymnasium

Wednesday, July 17

8:00 a.m. Stewardship Committee Meeting, Converse House Parlor

7:00 p.m. Trustee Meeting, Gymnasium

Thursday, July 18

10:00 a.m. Artists' Gathering, Fine Arts Center

Friday, July 19

No scheduled activities.

Saturday, July 20

No scheduled activities.

Sunday, July 21

8:00 a.m. **Worship with Communion, Chapel**

10:00 a.m. **Worship with Summer Choir, Sanctuary**

Brian K. Ballard will preach.

Summer Sunday School for Grades PreK - 3.

Worship Together Sunday for Children & Youth in Grades 4 - 12.

Renovations Update

Fullerton Room, Gloucester Room, Witherspoon Parlor and the Conference Room in the Ministries Center are no longer available as meeting spaces.

Childcare takes place in Fullerton Room, and Summer Sunday School is in Gloucester Room.

June & July: Enabling work and preconstruction began in June.

August 1: Education Building closes for construction.

This box will be updated regularly to keep you informed about how the renovation process is impacting our ministries and programs.



Worship Staff

Agnes W. Norfleet, Pastor

Brian K. Ballard, Associate Pastor for Pastoral Care & Senior Adults

Leigh DeVries, Associate Pastor for Youth & Their Families

Rebecca Kirkpatrick, Associate Pastor for Adult Education & Mission

Rachel Pedersen, Associate Pastor for Children & Family Ministry

Franklyn C. Pottorff, Associate Pastor for Congregational Life & Stewardship

Jeffrey Brillhart, Director of Music & Fine Arts

Edward Landin Senn, Assistant Director of Music

Contact Information



Bryn Mawr Presbyterian Church

625 Montgomery Avenue, Bryn Mawr, PA 19010

610-525-2821

www.bmpc.org

[Facebook.com/BrynMawrPres](https://www.facebook.com/BrynMawrPres) • [Instagram.com/BrynMawrPres](https://www.instagram.com/BrynMawrPres)

24/7 Answering Service for Pastoral Emergencies: 610-525-2821

Main Line Adult Day Center: 610-527-4220

The Middleton Center: 610-525-0766 • info@middletoncenter.org

The Weekday School (Preschool): 610-525-2821, ext. 8840