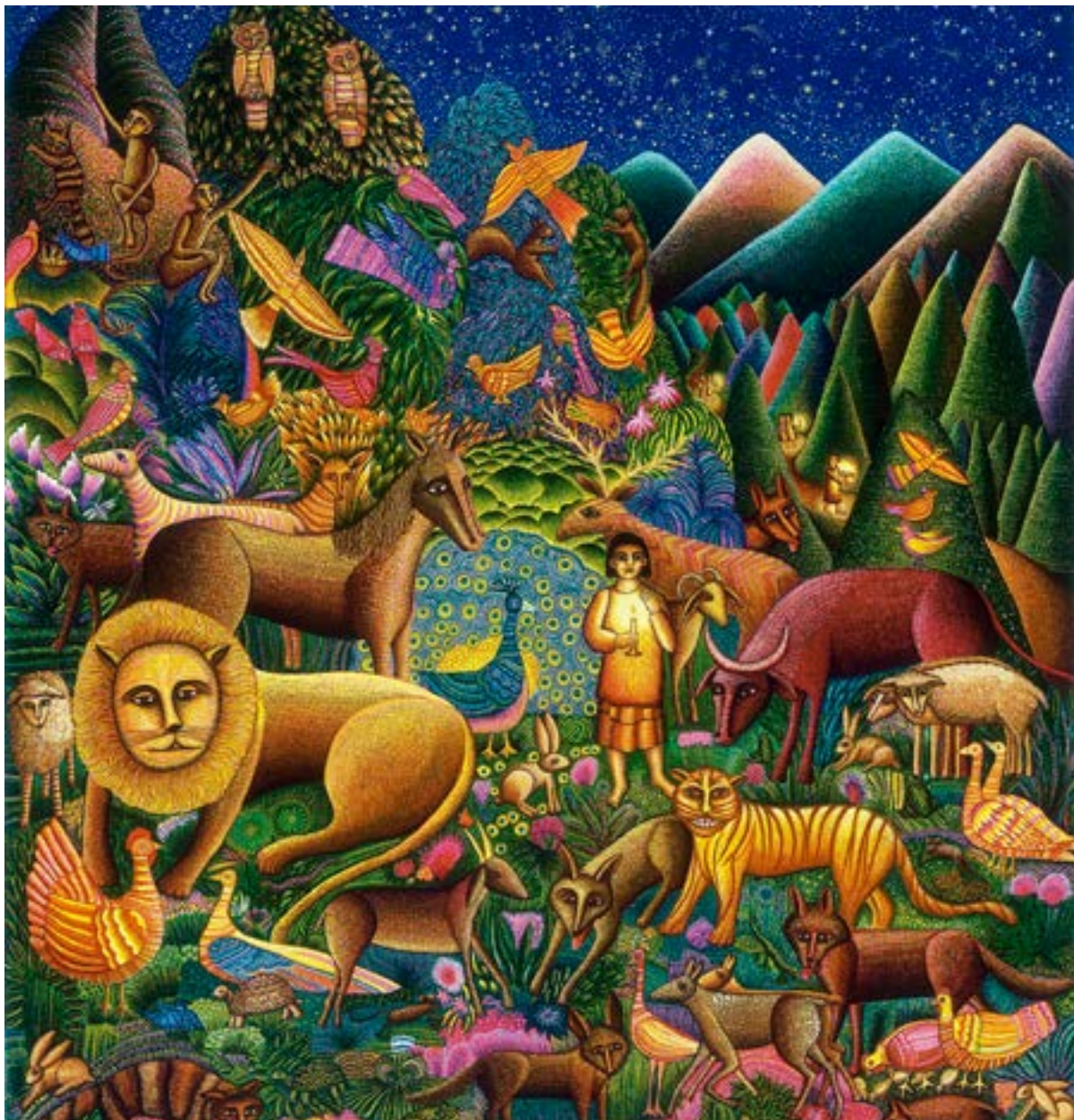


Bryn Mawr Presbyterian Church

Sunday, June 2, 2024 | 10:00 a.m., Sanctuary

Second Sunday after Pentecost



WELCOME

NEW HERE?

We are pleased that you are joining us as we worship God this morning. We invite you to introduce yourself to one of our pastors in the Atrium following the worship service. All of our programs, ministries and opportunities for mission are open to everyone. Come join us!

LIVESTREAMED CHURCH SERVICES

In addition to in-person worship, the Sunday worship services are available to watch live at 10:00 a.m. on our livestreaming page: www.bmpc.org/livestream. For your convenience, the service also will be posted on our Worship Services page on Monday.

CHILDCARE AND SUNDAY SCHOOL

Childcare is available on Sundays from 7:45 a.m. to 12:30 p.m. for children ages six months and older. See Sunday School class information on this page. Please contact the Rev. Rachel Pedersen, RachelPedersen@bmpc.org or Childcare Coordinator Erika Henry, childcare@bmpc.org with any questions.

WEEKLY E-NEWSLETTER

Subscribe to our BMPC eNews by visiting our website: www.bmpc.org.

Today's Schedule

Childcare (infant - age 5)

7:45 a.m. – 11:15 a.m.
Ed. Bldg., Rm. 101

Worship with Communion

8:00 a.m., Chapel

“Seeking Freedom” Exhibit

9:00 a.m. to 12:00 p.m., Gallery

Worship with Sanctuary Choir

10:00 a.m., Sanctuary

Worship Together Sunday

Grades K - 12

10:00 a.m., Sanctuary

Atrium Cafe

11:00 a.m., Atrium

GATHERING OF GOD'S PEOPLE

Please note that online worshipers join the livestream at 9:50 a.m.

We invite you to prepare for worship in quiet reflection.

PRELUDE “Plein jeu” and “Tierce en taille” from Suite Pierre DuMage

WELCOME Kirby Lawrence Hill

† CALL TO WORSHIP

One: Bless the Lord, O my soul,

You are clothed with honor and majesty,

**All: By the streams the birds of the air have their habitation;
they sing among the branches.**

One: From your lofty abode you water the mountains;
the earth is satisfied with the fruit of your work.

**All: Bless the Lord, O my soul,
and all that is within me, bless God's holy name.**

† **HYMN 32** I Sing the Mighty Power of God ELLACOMBE

CALL TO CONFESSION

AND PRAYER OF CONFESSION (*in unison*)

God of hosts, you have created us in goodness
and given us a job to do to care for your creation.

We have turned away from you,
neglecting the welfare of the Earth,

ignoring the plight of your people,

taking from the life you create what we cannot give back.

Forgive us, and lead us to a more gracious life.

In your compassion, Creator God, turn us to your way,

and restore us to our primary vocation to steward your creation.

A moment of silence for personal reflection and confession.

ASSURANCE OF PARDON

During the Sung Response, children are invited to come forward for the Children's Moment.

SUNG RESPONSE

NETTLETON

All the sins I have com-mit-ted, to my Sa-rior now I bring. I bow down with tears of
an - guish; Christ for - gives and so I sing: Je-sus Christ, how much I love you! Je-sus
Christ, you save from sin! How I love you! Look up - on me. Love me still and cleanse with - in.

PROCLAMATION OF THE WORD

CHILDREN'S MOMENT

Rachel Pedersen

SENDING HYMN Go Now, Children, with Our Blessing

Go now, child-ren with our bless-ing, to love and serve the Lord. May God
Bless you, May God guard you, May the light of God shine u - pon you, and may
God be gra-cious to you. May the pre-sence of God be with you. May the
pre - sence of God be with you, and give you peace.

Children return to their families.

PRAYER FOR ILLUMINATION

Kirby Lawrence Hill

FIRST LESSON

Psalm 8 (pg. 492 in pew Bible)

ANTHEM

O Sing Joyfully

Adrian Batten

O sing joyfully unto God our strength: make a cheerful noise unto the God of Jacob. Take the song, bring hither the tabret: the merry harp with the lute. Blow up the trumpet in the new-moon: even in the time appointed, and upon our solemn feast-day. For this was made a statute for Israel: and a law of the God of Jacob.

SECOND LESSON

Genesis 1:1-5, 20-31 (pg. 1 in pew Bible)

Agnes W. Norfleet

One: The Word of the Lord.

All: **Thanks be to God.**

SERMON

Created in the Image of God

Agnes W. Norfleet

All Creatures Great & Small Summer Series

† HYMN 713

Touch the Earth Lightly

TENDERNESS

RESPONSE TO THE WORD

† AFFIRMATION OF FAITH

Franklyn C. Pottorff

We affirm that the universe of matter, energy, and life is God's good creation in all its parts. Therefore we may work and play in it and explore it with wonder and joy. God included human beings among the creatures he made and charged them to care for other living things. We acknowledge we are kin to the other creatures. We are dependent on the systems that sustain all life. We hold the earth in trust for future generations of living things. The Lord forbids us to plunder, foul and destroy it. The Lord expects us to produce, to consume, to reproduce in ways that make the world's goodness available to all people and reflect God's love for all creatures. The Lord bids us use our technical skills for beauty, order, health, and peace.

~ Excerpt from a Declaration of Faith

PASTORAL PRAYER AND THE LORD'S PRAYER

Our Father who art in heaven, hallowed be thy name, thy kingdom come, thy will be done, on earth as it is in heaven. Give us this day our daily bread. And forgive us our trespasses, as we forgive those who trespass against us. And lead us not into temptation, but deliver us from evil. For thine is the kingdom, and the power, and the glory, forever. Amen.

INVITATION TO DISCIPLESHIP

OFFERTORY ANTHEM

Locus Iste

Ernest von Dohnanyi

This place was made by God, an inestimably holy place. It is without blame. Holy temple of God the Father; a holy place and set apart by God, righteousness within its gates.

*Please fill in the Friendship Pad at the end of your pew;
pass it down your row and back again.*

† **DOXOLOGY 606** Praise God, from Whom All Blessings Flow OLD HUNDREDTH
Praise God, from whom all blessings flow; praise God, all creatures here below;
praise God above, ye heavenly host; praise Father, Son, and Holy Ghost. Amen.

† **PRAYER OF DEDICATION** Franklyn C. Pottorff

† **HYMN 36** For the Fruit of All Creation AR HYD Y NOS

† **BENEDICTION AND CHORAL RESPONSE** Agnes W. Norfleet

POSTLUDE Toccata Eugene Gigout

WORSHIP NOTES

BULLETIN COVER IMAGE

Peaceable Kingdom © 2016 John August Swanson | Eyekons
Used with permission.

MUSIC NOTES

PLAYING THE CARILLON

Rob Mygatt

New Announcements

SUSTAINING DEMOCRACY: WHAT WE OWE THE OTHER SIDE. We look forward to welcoming Dr. Robert Talise as our fall Community Forum speaker on Mon., Sept. 30. Copies of his most recent book, *Sustaining Democracy: What We Owe the Other Side*, are available from the church now for those who would like to read it over the summer. In his book, Talise explores what it means to preserve democratic principles, what our obligations and values are as citizens of a democracy, and how we open ourselves to being in honest dialogue with those who hold differing political views from our own. Discounted books can be ordered for \$10 online: <https://bit.ly/BMPCBookpickup> or by contacting JenniferMcArthur@bmpc.org.

PRIDE MONTH RESOURCES. During June a variety of books on topics related to LGBTQ+ inclusion in the world and the church are available on the Converse in the Court shelves in the Ministries Center. These resources are part of our Converse Library collection and are available to borrow. As we work to build a more inclusive world, may these resources help us increase our understanding, broaden our welcome, and deepen our faith in an expansive God.

Upcoming

BMPC HIKE/WORK DAY. Sat., Jun. 8, 9:00 a.m., beginning at Haverford College Campus. The Environmental Justice Committee invites all to join together for a hike/work day. We will enjoy a hike around the Haverford College Campus, followed by a work session at Sharpe Bird Sanctuary. To sign up, contact David Heaton, heatondavid2@gmail.com by Jun. 3.

SUNDAE SUNDAY. Sun., Jun. 9, 11:15 a.m., Atrium. Join us for ice cream and non-dairy frozen treats to celebrate the end of the school year and the beginning of summer Sunday School.

SENIOR ADULT SPRING SOCIAL. Sun., Jun. 9, 4:00 p.m., Merion Tribute House. Members 55 and older are invited to enjoy fellowship with long-time and new friends at this annual event. Heavy hors d'oeuvres, desserts, and beverages will be served. The cost is \$20 per person, and we will accept free-will cash and check donations for ElderNet of Lower Merion and Narberth. RSVP by Mon., Jun. 3, to MonicaDevane@bmpc.org or <https://bit.ly/SeniorAdultSpringSocial2024>.

BLACK HISTORY IN THE PHILADELPHIA LANDSCAPE. Jun. 12, 7:00 p.m., Fullerton Room. Historian, educator, and author Amy Jane Cohen has studied the history of Black Americans in Philadelphia for more than 20 years. In *Black History in the Philadelphia Landscape: Deep Roots, Continuing Legacy*, Ms. Cohen highlights the contributions of slaves, laborers, entrepreneurs, abolitionists, clergy, educators, historians, and civil rights leaders who influenced the formation of Philadelphia from the 18th to the 21st centuries. The program is free, but please register and order a discounted copy of the book (\$10) by Jun. 7, <https://bit.ly/BMPCBookTalk>. For more info., JenniferMcArthur@bmpc.org.

DIGGING DEEPER-DEVOTIONAL CLASSICS. Sun., Jun. 16 – Jul. 28, 8:45 a.m., Gloucester Room. This Sunday morning Adult Education class will resume for six weeks this summer (skipping Jul. 7) to study Richard Foster's Devotional Classics. This collection includes excerpts from the works of great spiritual writers of the past as well as contemporary spiritual leaders. Members of the class will take turns facilitating the discussion. For more info. and to order a book, contact JenniferMcArthur@bmpc.org.

LESSONS IN LIGHT, CONVERSATIONS ON THE SANCTUARY STAINED GLASS. Sun., Jun. 16, 23, 30, 11:15 a.m., Sanctuary. We will spend three weeks looking closely at the five Sanctuary stained glass windows located in the Chancel and Transepts. The class will explore the design process, the theological and biblical details they illuminate, and the ways that the windows capture a particular moment in the church's history. This class will be taught by the Rev. Rebecca Kirkpatrick.

In the Gallery

SEEKING FREEDOM: PORTRAITS OF MASS INCARCERATION. May 5 through Sept. 1, Gallery. Several large portraits, created in batik, quilting, and embroidery by textile artist Carolyn Harper, form a dramatic exhibition that combines the portraits with texts written by the artist in collaboration with the sitters, telling the stories of these currently and formerly incarcerated people.

Caring & Sharing

CASSEROLE BLITZ. Sat., Jun. 15, 8:30 a.m., Ministries Center Kitchen. Join us for the last Casserole Blitz of the season to make casseroles and friends! Enjoy this family activity (children over age 5) as you get to know BMPC folks you haven't met before and support a good cause while working with others to prepare casseroles for area shelters. Please use our RSVP link to sign up: <https://bit.ly/Blitz-RSVP>.

JUNETEENTH CELEBRATION ON THE MAIN LINE. Sat., Jun. 22, 12:00-6:00 p.m., Vernon Young Playground, Ardmore. Join your neighbors and friends for a local celebration of Juneteenth. The event will include music, food and community vendors, including a table hosted by BMPC Volunteers sharing information about our congregation and work in the local community. For more info., contact JenniferMcArthur@bmpc.org.

HABITAT FOR HUMANITY PHILADELPHIA. Sat., Aug. 10, 8:30 a.m. - 3:00 p.m., off campus. Looking for a meaningful way to volunteer? Habitat for Humanity Philadelphia welcomes you! Habitat works alongside volunteers toward a vision of a city where everyone has a decent place to live, and we invite you to help provide shelter for others. Email JenniferMcArthur@bmpc.org to register. Limited spots available.

SANCTUARY FLOWER DONATIONS. Openings are available in June and July for donors who wish to give flowers in memory of or in honor of loved ones. Later, our Deacons deliver small arrangements of the Sanctuary flowers to homebound church members. If you would like to donate flowers for a Sunday worship service, contact SusanThorkelson@mac.com.

NON-PERISHABLE FOOD DONATIONS NEEDED. During the summer, our local food pantries need extra support through the donations of non-perishable items. You can bring items for donation - soup, canned chicken, fruit cups/canned fruit, oatmeal, box cereal, pasta, paper goods, juice, and brown rice - during the week to the Church Office reception desk or leave them in the Narthex of the Sanctuary or Chapel on Sunday mornings. Thank you in advance for your support of the fight against hunger.

SUPPORT OUR LOCAL REFUGEE EFFORTS. The BMPC Refugee Support Committee continues in its work to support local families and individuals making a new home in our community and greater Philadelphia. Supporting refugees and asylum seekers means walking with them as they navigate legal, governmental, educational, and community resources. The Committee's work also includes providing financial resources to supplement the limited government assistance they receive. If you would like to contribute financially to the work of the BMPC Refugee Support Committee, please donate by writing "Refugee Support" on the memo line of a check, or give a one-time or recurring gift online at <https://onrealm.org/bmpc/give/refugee>.

Calendar

Sunday, June 2

7:45 a.m.
8:00 a.m.
9:00 a.m.

Childcare (Birth-Kindergarten), Ed. Bldg., Rm. 101

Worship with Communion, Chapel

"Seeking Freedom", Gallery

Discover BMPC, Gloucester Room

Bay Fund Meeting, Ed. Bldg., Library

Hersheypark Fun Day, off campus

Worship Together Sunday Grades K-12

Worship with Sanctuary Choir,

Sanctuary and Livestreamed Service on www.bmpc.org

Atrium Cafe, Atrium

11:00 a.m.

Monday, June 3

No events scheduled

Tuesday, June 4

10:30 a.m.
1:00 p.m.
7:00 p.m.

Tai Chi (Hybrid), Gymnasium

Dance for Parkinson's Disease (PD) Class, Gymnasium

Deacon's Meeting, Fullerton Room

Wednesday, June 5

9:30 a.m.

Yoga206 Bone Boost, Gymnasium

Thursday, June 6

11:00 a.m.
2:00 p.m.
3:00 p.m.
5:45 p.m.

Artists' Gathering, Fine Arts Center

Church Offices Close Early

Baldwin's Graduation, Sanctuary

Case/Pancoast Wedding Rehearsal, Sanctuary

Friday, June 7

10:00 a.m.
5:00 p.m.

Senior Adult Council Meeting, virtual

Case/Pancoast Wedding, Sanctuary

Saturday, June 8

7:00 a.m.

11:00 a.m.

Saturday Morning Men's Connection Group,
Converse House Parlor

Barbara Smetana Memorial Service, Chapel

Sunday, June 9

8:00 a.m.
10:00 a.m.

Worship with Communion, Chapel

Worship with Sanctuary Choir,

Sanctuary and Livestreamed Service on www.bmpc.org

The Rev. Dr. Agnes W. Norfleet will preach.

Worship Staff

Agnes W. Norfleet, Pastor

Leigh DeVries, Associate Pastor for Youth & Their Families

Rebecca Kirkpatrick, Associate Pastor for Adult Education & Mission

Kirby Lawrence Hill, Interim Associate Pastor for Pastoral Care & Senior Adults

Rachel Pedersen, Associate Pastor for Children & Family Ministry

Franklyn C. Pottorff, Associate Pastor for Congregational Life & Stewardship

Jeffrey Brillhart, Director of Music & Fine Arts

Edward Landin Senn, Assistant Director of Music

Contact Information

Bryn Mawr Presbyterian Church

625 Montgomery Avenue, Bryn Mawr, PA 19010

610-525-2821 | www.bmpc.org

24/7 Answering Service for Pastoral Emergencies:
610-525-2821

The Middleton Center: 610-525-0766 |
info@middletoncenter.org

The Weekday School: 610-525-2821, ext. 8840

www.facebook.com/BrynMawrPres

www.instagram.com/BrynMawrPres

www.youtube.com/user/brynmawrpres

