



# *Bryn Mawr Presbyterian Church*

---

November 3, 2019  
10:00 a.m., Sanctuary  
All Saints Sunday

# WELCOME TO BMPC

## TODAY'S SCHEDULE

### **Childcare (infant - age 5)**

7:45 a.m. - 12:30 p.m.

Fullerton Room, Ministries Center

### **10:00 a.m. Worship, Sanctuary**

#### **Age 2 - PreK Classes**

10:00 a.m., Ministries Center

#### **Grades K - 3 Classes**

10:00 a.m., Worship in Sanctuary

10:15 a.m., Ministries Center

#### **Grades 4 -12**

Worship Together Sunday

10:00 a.m., Sanctuary

#### **Coffee & Fellowship**

11:00 a.m., Gymnasium

**NEW HERE?** We give thanks that you are joining us as we worship God this morning. We invite you to stop by and say hello to one of our pastors in the Narthex following the worship service. All of our programs, ministries, and opportunities for mission are open to everyone. Come join us!

**JOIN US FOR FELLOWSHIP.** Stop by the Ministries Center Court for coffee between 8:00 - 10:00 a.m. and join us for Coffee and Fellowship in the Gym after the 10:00 a.m. Worship Service.

**TO ASSIST YOU DURING WORSHIP.** Large print bulletins, back pillows and hearing assistance devices are available; ask an usher. Children's bulletins with crayons may be found near the main entrance.

**SUNDAY SCHOOL.** We are pleased to offer education opportunities for all ages, listed in this bulletin. **Grades K-3** worship with their families in the Sanctuary before being dismissed to Sunday School. If this is your first Sunday, please accompany your child to the Ministries Center.

Subscribe to our BMPC eNews by adding your email address to the Fellowship Register. For additional information about today's schedule, see the calendar at the back of this bulletin.

[www.BMPC.org](http://www.BMPC.org)

# GATHERING OF GOD'S PEOPLE

## PRELUDE

Before Thy Throne I Now Appear

J.S. Bach

## WELCOME

Rachel Pedersen

## † CALL TO WORSHIP

Miles Bertrand

One: We gather on this All Saints Sunday as people of faith.

**All: We believe that Jesus died and rose again,  
And so it will be for those who have died in Christ.**

One: We gather before the promises of God as people of hope.

**All: God will raise us to be with the Lord forever.**

One: We gather around the Communion Table with thanksgiving

**All: For the great cloud of witnesses who join our voices  
Singing "Alleluia" to God of heaven and of earth.**

## † HYMN 326

For All the Saints

SINE NOMINE

## INTROIT

Song for Athene

John Tavener

Sanctuary Choir; Siddhartha Misra and Corey Bonar, soloists

Alleluia. May flights of angels sing thee to thy rest. Remember me, O Lord, when you come into your kingdom. Give rest, O Lord, to your handmaid who has fallen asleep. The Choir of Saints have found the well-spring of life and door of paradise. Life: a shadow and a dream. Weeping at the grave creates the song: Alleluia. Come, enjoy rewards and crowns I have prepared for you.

## CALL TO CONFESSION

Rachel Pedersen

### AND PRAYER OF CONFESSION *(in unison)*

Almighty God, by your Holy Spirit you have made us one  
with all your children in heaven and on earth.

Forgive us when we fail to trust your word  
that nothing can separate us from your love,  
in heaven or on earth.

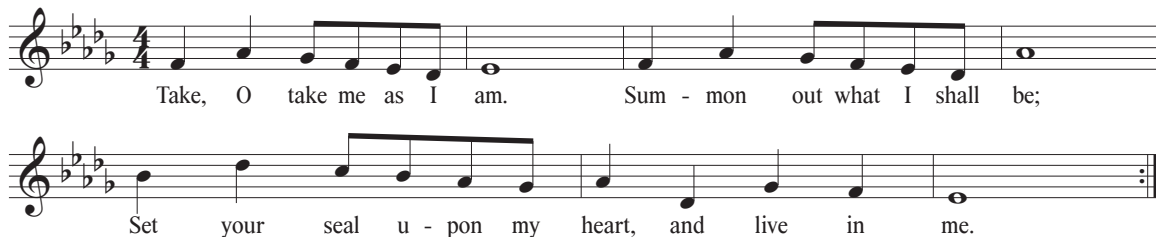
Guide us to rejoice with all your saints  
who ceaselessly proclaim your praise, through Christ our Savior.

*A moment of silence for personal reflection and confession.*

## ASSURANCE OF PARDON

## RESPONSE

*First time: Congregation; Second time: children and youth*



Text and Music © 1995 WGRG, Iona Community (admin. GIA Publications, Inc.)  
All rights reserved. Reprinted under OneLicense.net #A-716211.

*Children are invited to come forward during the response  
for the Anthem and Children's Moment.*

## PROCLAMATION OF THE WORD

### ANTHEM

Pie Jesu

Tom Shelton

Children's Choir, Youth Chorale

Oscar Medina, baritone, Brian Williams, violin

Merciful Jesus, give them rest; Merciful Jesus Lord. Lamb of God, who takes  
away the sins of the world, merciful Jesus, give them rest eternally.

### CHILDREN'S MOMENT

Rachel Pedersen

*Children K - Grade 3 depart for their Sunday School classes.*

### FIRST LESSON

Psalm 146 (p. 581 in pew Bible)

Franklyn C. Pottorff

### SECOND LESSON

Luke 19:1-10 (p. 260 in pew Bible)

Agnes W. Norfleet

One: The Word of the Lord.

All: **Thanks be to God.**

### SERMON

*Little Saints*

Agnes W. Norfleet

† HYMN 500

Be Known to Us in Breaking Bread

ST. FLAVIAN



# RESPONSE TO THE WORD

## OFFERING

Brian K. Ballard

## OFFERTORY ANTHEM

And I Saw a New Heaven  
Sanctuary Choir

Edgar L. Bainton

And I saw a new heaven and a new earth, for the first heaven and the first earth were passed away and there was no more sea. And I, John, saw the holy city, new Jerusalem, coming down from God out of heaven, prepared as a bride adorned for her husband. And I heard a great voice out of heaven, saying "Behold, the tabernacle of God is with men and he will dwell with them and they shall be his people, and God himself shall be with them and be their God. And God shall wipe away all tears from their eyes; And there shall be no more death, neither sorrow nor crying; neither shall there be any more pain, for the former things are passed away."

*Please fill in the Fellowship Register at the end of your pew;  
pass it down your row and back again.*

## PRAYER OF DEDICATION

Franklyn C. Pottorff

## THE SACRAMENT OF THE LORD'S SUPPER

### INVITATION

### THE GREAT THANKSGIVING

One: The Lord be with you.

**All: And also with you.**

One: Lift up your hearts.

**All: We lift them to the Lord.**

One: Let us give thanks to the Lord our God.

**All: It is right to give our thanks and praise.**

### THE LORD'S PRAYER

Our Father who art in heaven, hallowed be thy name, thy kingdom come, thy will be done, on earth as it is in heaven. Give us this day our daily bread. And forgive us our trespasses, as we forgive those who trespass against us. And lead us not into temptation, but deliver us from evil. For thine is the kingdom, and the power, and the glory, forever. Amen.

## COMMUNION OF THE PEOPLE

*As the bread and cup are distributed, you are invited to take the bread and cup and pass it to your neighbor in the pew. Gluten- and casein-free bread is available in the small container located on each plate.*

## MUSIC AT COMMUNION

Lux Aeterna  
Sanctuary Choir;

Edwin Fissinger

Elizabeth Weigle and Jeffrey Wilber, soloists

May light eternal shine upon them, O Lord: In the company of thy saints forever and ever; for thou art merciful. Rest eternal grant to them, O Lord, and let perpetual light shine upon them.

## PRAYER AFTER COMMUNION

### BENEDICTION WITH CHORAL RESPONSE

Agnes W. Norfleet

Let My Love be Heard  
Sanctuary Choir

Jake Runestad

Angels, where you soar up to God's own light, take my own lost bird on your hearts tonight; And as grief once more mounts to heaven and sings, let my love be heard whispering in your wings.

### POSTLUDE

O World I Now Must Leave You

Johannes Brahms

*The congregation is invited to remain seated during postlude.*

## *Music Notes*

After six years of presenting full *Requiem* settings for the occasion of All Saints Sunday, this year we present anthems that are appropriate for each section of a *Requiem*, composed by a diverse group of composers.

***Song for Athene*** was composed in 1993 and uses texts from Hamlet and the Orthodox funeral service to honor the passing of Tavener's friend, Athene Hariades. Tavener wrote, "Her inner and outer beauty was reflected in her love of acting, poetry, music, and of the Orthodox Church." The work was included memorably in the funeral service of Diana, Princess of Wales, in 1997.

***And I Saw a New Heaven.*** Its text is taken from the opening verses of Revelation, Chapter 21, where John speaks of his awe at seeing the new heaven and new earth. The imagery of Revelation is exceptionally rich: the sea, which had been home to the Beast of Revelation (Revelation 13:1), is no more; there is no more death, no more pain, “for the old things are passed away.” Apart from the words of Jesus that are spoken from his throne, his words that proclaim, “Behold,” in the holy city, the new Jerusalem, “The tabernacle of God is with men,” Bainton’s setting of this memorable text is warm and contemplative. Written in 1928, *And I Saw a New Heaven* has achieved status as one of the most beloved and frequently performed of all choral anthems, both in England and the United States.

An important contributor to the choral art in the United States, Edwin Fissinger’s (1920-1990) career spanned composition, choral conducting, and education at several institutions across the Midwest. Fissinger’s beautiful ***Lux aeterna*** layers fluid Gregorian chant melodies over gently clustered chords in ascending stacks of sound. This technique has become a typical feature of modern choral music, and contemporary composers such as Morten Lauridsen, Eric Whitacre, Kim Arnesen, and Jake Runestad (all familiar to BMPC). His use of the solo soprano voice is particularly striking as she ascends above the rich, dark clusters of sound to depict the plea for perpetual light of peace to shine on all the saints.

“Though originally written for Choral Arts Northwest, ***Let My Love Be Heard*** has taken on a new life in light of the atrocities in Paris and Beirut. Jonathan Talberg, conductor of the choir at California State University, Long Beach, led his singers in a performance during the memorial vigil for Nohemi Gonzalez, a member of the CSULB choir who was killed in the (2015) Paris attacks. The day after the vigil, the choir was supposed to begin rehearsing holiday music; however, Jonathan felt that was not appropriate and wanted time for the singers to grieve this loss. So, at the beginning of rehearsal, he passed out a brand-new piece of music (*Let My Love Be Heard*), rehearsed it, and then recorded it. It was posted on SoundCloud and shared in memory of Nohemi and as a plea for peace. Their musical offering is a powerful outpouring of grief, but also a glimmer of light. I am honored that this piece, *Let My Love Be Heard*, has helped to provide hope in the darkness of our world.” ~ Jake Runestad

## **IN MEMORIAM**

William Evans  
Robert Austell  
Fred Hudson  
Josephine Soltis  
Susan Howard  
Joshua Thompson  
Edward Wilford  
Carson McClain  
Joann McSorley  
John Bogle  
Cornelia Bryans  
William Lee  
Charles Soltis  
Eric Lacktman  
Lucy Burns  
Elizabeth Herman

Margaret Bechtle  
Ruth Parker  
Marshall Vaughters  
Keith Weaver  
June Adelhelm  
William Heinsohn  
Marjorie Boyer  
Louise Miller  
William Vogel  
Donald Dupler Jr.  
John Haeberlen  
Jean Dykstra  
Marjorie Helmetag  
Mary Jane Kleckner  
M. Robert Moyer

†

*"I am the resurrection and the life."*

M. Robert (Bob) Moyer ~ Oct. 29, 2019



## **Worship Notes**

### **SANCTUARY FLOWERS**

Given to the glory of God and in loving memory of  
John and Jean Africa

### **GREETING**

Children and Family Ministry & Youth Ministry

# **Announcements**

**PARK 'EM AT HARCUM.** For 10:00 a.m. worship, we invite members who are able, to park across Montgomery Avenue at Harcum College, making parking available in our lot for those who need to be closer to church, and for visitors. Please also note that Baldwin School parking lots should not be used on Sunday mornings out of courtesy to their residential staff.

**BRYN MAWR GIVES: STEWARDSHIP 2020.** A week after Dedication Sunday and we already can thank so many of you who have pledged generously in support of our 2020 Stewardship Campaign, Bryn Mawr Gives! This week we note that our outreach in West Philadelphia is supported by your stewardship gifts. As a reminder, you may offer your pledge by mail, offering plate or online:  
<https://www.bmpc.org/giving/annual-stewardship>. Thank you!

**LOOKING FOR A CHURCH HOME?** Consider learning more about being in community here by attending our “Discover BMPC” orientation classes on Mondays, Nov. 25 and Dec. 2 at 7:00 p.m. in the Ministries Center. These two classes provide an opportunity to become acquainted, ask questions, and learn more about our church, our Presbyterian heritage, and our mission. Inquirers welcome, and childcare available with advance notice. Register online at [www.bmpc.org](http://www.bmpc.org) > Calendar > Open Registrations. [FranklynPottorff@bmpc.org](mailto:FranklynPottorff@bmpc.org).

**PARTICIPATE IN OUR CHRISTMAS EVE FAMILY SERVICE.** Calling all actors and readers! Children 4 years and older are invited to participate in the Christmas Eve family service on Dec. 24 at 4:30 p.m. in the Sanctuary. Deadline is Mon., Nov. 11. Contact [MaryRichards@bmpc.org](mailto:MaryRichards@bmpc.org) with the ages of children and if they would like to speak, read, or act.

**CHRISTMAS FLOWER DONATIONS.** Contributions may be given in three categories for listings in the Christmas Eve bulletin: “In memory of,” “In honor of,” or “In celebration of (marriage, retirement, birth, baptism).” Forms are available in the Ministries Center, in the back of the Sanctuary, or at [www.bmpc.org](http://www.bmpc.org). Monies received are used year-round for our floral decorations and Deacons’ flower ministry. Deadline: Sun., Nov. 24.

## **Today**

**ALL SAINTS SUNDAY WORSHIP SERVICE.** In observance of All Saints Sunday, the 10:00 a.m. worship service in the Sanctuary features special music by the Children's Choir, Youth Chorale and Sanctuary Choir.

**STEEL CONTEMPLATION – ART IN THE CHILDREN'S CHAPEL.** Today and next Sunday, Nov. 10, you are invited to view a series of art pieces by BMPC member George Robert (Bob) Overhiser Jr., based on his first-hand experiences in New York City on September 11<sup>th</sup> 2001. Following 10:00 a.m. worship today, Bob will talk about his artwork in the Children's Chapel.

## **This Week**

**HORIZONS BIBLE STUDY.** Wed., Nov. 6, 10:30 a.m., Rosemont Presbyterian Village Ballroom. The Rev. Brian Ballard leads Lesson 3, "Words of Love," in *Love Carved in Stone*. Joyce Malott, okf405@gmail.com.

**PASTOR'S BOOK GROUP.** Wed., Nov. 6, 6:30 p.m., Chapel. The Rev. Franklyn Pottorff leads a discussion of *Holy Envy: Finding God through the Faith of Others* by Barbara Brown Taylor. Taylor weaves together stories from the classroom with reflections on how her own spiritual journey has been complicated and renewed by connecting with people of other traditions — even those whose truths are quite different from hers. Books are available for purchase in the BMPC Book Center or Ministries Center Reception Desk for \$18.

**SANCTUARY CHOIR OPEN REHEARSALS.** Do you have questions about joining our Sanctuary Choir? On the first Thursday of every month we have an open rehearsal for visitors to drop in and try it out. Your next opportunity is Thurs., Nov. 7 at 7:00 p.m. in the Fine Arts Center. Contact StephanieSpeakman@bmpc.org if you plan to attend.

**HOLY LEISURE.** Fri., Nov. 8, 6:00-9:00 p.m., home of Claire Swarr, Wayne. Join old and new friends for potluck dinner, fellowship and a lively discussion with Leigh DeVries, Associate Pastor for Youth and Their Families. Register: <http://bit.ly/HolyLeisureNovember2019> and include the specific food or drink donation you are bringing.

**CASSEROLE BLITZ.** Sat., Nov. 9, 8:30 a.m., Main Kitchen. The Hunger Committee is making 130 casseroles (1,300 meals) for Philadelphia area food cupboards. Children over 4 years old are welcome. Bring your own apron or wear clothes appropriate for kitchen work. Registration requested: Sandie Nicholson, sandiekev@verizon.net.

## **Next Sunday**

**NEAR EAST SCHOOL OF THEOLOGY.** Sun., Nov. 10, 11:15 a.m., Chapel. Presentation by the Rev. Dr. George Sabra, President of NEST. Located in Beirut, Lebanon, it is one of the preeminent Christian seminaries in the Middle East. A long-term mission partner of BMPC, its staff works faithfully to train the next generation of clergy serving in Presbyterian Churches in Lebanon and Syria who face one of the greatest humanitarian crises of our generation.

## **Upcoming**

**Y-GROUP STOCKING DECORATION.** Tues., Nov. 12, 9:15-11:00 a.m., Congregational Hall. Share the joy of Christmas by decorating Christmas stockings for children and youth served by theVillage. Abby Pottorff, ygroupbmpc@gmail.com.

**WINTERTHUR: THE CROWN.** Thurs., Nov. 14, 9:45 a.m. - 3:00 p.m. Bus departs from the back parking lot. Costuming “The Crown” features 40 iconic costumes from the Emmy® award-winning Netflix series, a dramatized history of the reign of Queen Elizabeth II. We begin the day with a guided tour of the Distinctive Collections, then on your own for lunch (or bring your own), tour “The Crown” collection and enjoy a tram tour of the gardens. The bus departs at 10:00 a.m. sharp and returns by 3:00 p.m. Price: \$20 per person; includes the tour and bus driver gratuity. Sign up with your check, payable to BMPC, by Nov. 7, or online: Calendar > Open Registrations > Register.

**ADVENT GIFT MARKET.** Sun., Nov. 17, 11:00-12:30 p.m., Congregational Hall. Join us for the opening Market Festival where representatives from the various committees and councils are present to answer questions about the chosen mission projects and AGM representatives take your orders on successive Sundays in the gymnasium. Orders also may be placed online at [www.bmpc.org](http://www.bmpc.org).

**EVERYTHING YOU ALWAYS WANTED TO KNOW ABOUT RELIGION BUT WERE AFRAID TO ASK.** Sun., Nov. 17, 11:15 a.m., Chapel. The Rev. Dr. Paul MacMurray leads an informal conversation on the basics of Christian theology, the Bible and tradition, based on questions that participants bring to the class.

**ORDINATION & INSTALLATION OF OUR NEW ASSOCIATE PASTOR.** Sun., Nov. 17, 4:00 p.m., Sanctuary. Leigh DeVries, Pastor for Associate Youth & Their Families, is to be ordained and installed in a special worship service. Reception follows. Childcare is available by emailing [childcare@bmpc.org](mailto:childcare@bmpc.org) with your request.

**URBAN SUBURBAN BOOK GROUP.** Tues., Nov. 19, noon, Converse House Parlor. Discussion of *Where the Crawdads Sing* by Delia Owens. [JoanneHanna3@comcast.net](mailto:JoanneHanna3@comcast.net).

**BIBLE FROM SCRATCH.** Thurs., Nov. 21, 7:00 p.m., Loft. Led by the Rev. Rebecca Kirkpatrick. If you're ready to think about scripture in new and creative ways, this class is for you.

**ANNUAL THANKSGIVING PANCAKE BREAKFAST.** Thurs., Nov. 28, 8:30-11:30 a.m., Congregational Hall. Join us for “Pancakes for a Purpose” and enjoy fellowship and food at this annual event. All proceeds (\$5 per person) support the youth mission projects and trips.

**PRIME TIME ADVENT PARTY, FOR SINGLES AND COUPLES AGE 50+.** Sun., Dec. 8, 6:00-8:00 p.m., New location: Merion Tribute House (directions to be mailed). Register by Dec. 5 online at [www.bmpc.org](http://www.bmpc.org) > Calendar > Open Registrations or with a check for \$18/person (includes heavy hors d'oeuvres and beverages), attn: Monica Devane.

## ***Caring & Sharing***

**FOOD DONATIONS NEEDED.** Donations have been *low*, and the need is *great*. Place donations in baskets in the Narthex or in the food cupboard in the hallway next to the elevators in the Ministries Center.

**TURKEY AND HAM COLLECTION.** Frozen turkeys and hams may be contributed for distribution by the Hunger Committee during November. Freezers are located in the hallway next to the elevator in the Ministries Center.



# **This Week's Calendar**

*For more information, visit our website at [www.bmpc.org](http://www.bmpc.org),  
call the church office, or contact [communications@bmpc.org](mailto:communications@bmpc.org).*

## **Today, November 3**

- 7:45 a.m. Childcare, Fullerton Room  
8:00 a.m. **Worship with Communion, Chapel**  
8:45 a.m. Digging Deeper, Main Line Adult Day Center, First Floor Living Room  
Filling the Well, Converse House Parlor  
Sunday Morning Discussion Group, Congregational Hall  
Art @ 9, Conference Room  
10:00 a.m. **Worship with Communion, Children's Choir, Youth Chorale,  
and Sanctuary Choir**  
Sunday School for age 2, Gloucester Room  
Sunday School for age 3, Witherspoon Parlor  
Sunday School for Pre-K, Middleton Center, Rm. 200  
Grades K - 3 Begin Worship in the Sanctuary  
Worship Together Sunday for Grades 4 - 12  
10:15 a.m. Sunday School for Grade K, Middleton Center, Rm. 202  
Sunday School for Grades 1 & 2, Congregational Hall  
Sunday School for Grade 3, Middleton Center, Rm. 301  
11:00 a.m. Coffee & Fellowship, Gymnasium  
11:30 a.m. Tintinnabulators, Fine Arts Center

## **Monday, November 4**

*No scheduled activities.*

## **Tuesday, November 5**

- 9:00 a.m. Repose Yoga, Gymnasium  
10:30 a.m. Tai Chi, Gymnasium  
1:00 p.m. Dance for Parkinson's Disease, Gymnasium  
7:00 p.m. Deacons Meeting, Chapel  
7:30 p.m. Boy Scout Committee Meeting, Pastors' Conference Room

### **Wednesday, November 6**

- 10:00 a.m. Women's Coffee Cup Bible Study, Congregational Hall
- 10:30 a.m. Horizons Bible Study, Rosemont Presbyterian Village Ballroom
- 4:45 p.m. Wednesdays Together (Grades K-5), Fine Arts Center
- 5:30 p.m. Wednesday Night Dinner, Congregational Hall
- 5:45 p.m. Youth Chorale (Grades 6-12), Fine Arts Center
- 6:30 p.m. Pastor's Book Group: *Holy Envy: Finding God through the Faith of Others*  
by Barbara Brown Taylor, Chapel
- 7:00 p.m. Student Serve, Loft  
Worldwide Ministries Committee Meeting, Converse House Parlor  
Music and Fine Arts Council, Fine Arts Center

### **Thursday, November 7**

- 9:15 a.m. Senior Exercise Class, Gymnasium
- 9:30 a.m. Singing for Life, Fine Arts Center
- 10:00 a.m. Artists' Gathering, Fine Arts Center
- 6:00 p.m. Refugee Support Committee Meeting, Congregational Hall
- 6:30 p.m. Boy Scout Court of Honor, Gymnasium
- 7:00 p.m. Sanctuary Choir and Bryn Mawr Chamber Singers, Fine Arts Center

### **Friday, November 8**

- 10:00 a.m. Senior Adult Council Meeting, Converse House Parlor
- 4:00 p.m. Children's Spanish Class, Gloucester Room and Witherspoon Parlor
- 6:00 p.m. Holy Leisure, Event is Off Campus

### **Saturday, November 9**

- 7:00 a.m. Saturday Morning Mens' Group, Converse House Parlor
- 8:30 a.m. Casserole Blitz, Congregational Hall Kitchen
- 10:00 a.m. Baptism Workshop, Fullerton Room  
Searching for Still Waters Bereavement Group, Middleton Center, Rm. 202

### **Sunday, November 10**

- 8:00 a.m. **Worship with Communion, Chapel**
- 10:00 a.m. **Worship with Sanctuary Choir, Sanctuary**  
The Rev. Dr. Agnes W. Norfleet will preach.  
Sunday School for age 2 - Grade 12.

## **Renovations Update**

**Daytime Traffic Patterns:** Each weekday from 7:00 a.m. until 2:00 p.m., the driveway between the Chapel and the Sanctuary will be *one way*, with cars exiting onto Montgomery Avenue. This adjustment allows for the safe movement of children from the Weekday School during drop-off and pick-up. Please use the driveway between the Ministries Center and the Sanctuary to enter the campus from Montgomery Avenue during these weekday hours.

For more renovation updates, please visit us at:  
**[www.bmpc.org/welcome/renovation-updates](http://www.bmpc.org/welcome/renovation-updates)**

*This box will be updated regularly to keep you informed about how the renovation process is impacting our ministries and programs.*



## **Worship Staff**

**Agnes W. Norfleet**, Pastor

**Brian K. Ballard**, Associate Pastor for Pastoral Care & Senior Adults

**Leigh DeVries**, Associate Pastor for Youth & Their Families

**Rebecca Kirkpatrick**, Associate Pastor for Adult Education & Mission

**Rachel Pedersen**, Associate Pastor for Children & Family Ministry

**Franklyn C. Pottorff**, Associate Pastor for Congregational Life & Stewardship

**Jeffrey Brillhart**, Director of Music & Fine Arts

**Edward Landin Senn**, Assistant Director of Music

## **Contact Information**



**Bryn Mawr Presbyterian Church**

625 Montgomery Avenue, Bryn Mawr, PA 19010

610-525-2821

[www.bmpc.org](http://www.bmpc.org)

[Facebook.com/BrynMawrPres](https://www.facebook.com/BrynMawrPres) • [Instagram.com/BrynMawrPres](https://www.instagram.com/BrynMawrPres)

24/7 Answering Service for Pastoral Emergencies: 610-525-2821

Main Line Adult Day Center: 610-527-4220

The Middleton Center: 610-525-0766 • [info@middletoncenter.org](mailto:info@middletoncenter.org)

The Weekday School (Preschool): 610-525-2821, ext. 8840