



# *Bryn Mawr Presbyterian Church*

---

November 3, 2019  
8:00 a.m., Chapel  
All Saints Sunday

# WELCOME TO BMPC

## TODAY'S SCHEDULE

### **Childcare (infant - age 5)**

7:45 a.m. - 12:30 p.m.  
Fullerton Room, Ministries Center

### **8:00 a.m. Worship, Chapel**

#### **Digging Deeper**

8:45 a.m., Main Line Adult  
Day Center, First Floor

#### **Filling the Well**

8:45 a.m., Converse House  
Parlor

#### **Sunday Morning Discussion Group**

8:45 a.m., Congregational Hall

#### **Art @ 9**

Ages 3 - Grade 5  
8:45 a.m., Conference Room

### **10:00 a.m. Worship, Sanctuary**

Sunday School for Ages 2 - Grade 3  
Worship Together Sunday for  
Grades 4 - 12

*See calendar at back of bulletin for  
a complete schedule.*

**NEW HERE?** We are pleased that you are joining us as we worship God this morning. Information about our programs is available near the main entrance. We invite you to participate in any of our programs, ministries and mission opportunities, as they are open to all.

**JOIN US FOR FELLOWSHIP.** Stop by the Ministries Center Court for coffee between 8:00 - 10:00 a.m. and join us for Coffee and Fellowship in the Gym after the 10:00 a.m. Worship Service.

**TO ASSIST YOU DURING WORSHIP.** Children's bulletins with crayons may be found near the main entrance. If you are unable to come forward for Communion, please let an usher or server know, and Communion will be brought to you.

Subscribe to our BMPC eNews by adding your email address to the Fellowship Register.  
For additional information about today's schedule, see the calendar at the back of this bulletin.

[www.BMPC.org](http://www.BMPC.org)

# GATHERING AROUND THE WORD

## PRELUDE

## WELCOME

Brian K. Ballard

## † CALL TO WORSHIP

One: We gather on this All Saints Sunday as people of faith.

**All: We believe that Jesus died and rose again,  
And so it will be for those who have died in Christ.**

One: We gather before the promises of God as people of hope.

**All: God will raise us to be with the Lord forever.**

One: We gather around the Communion Table with thanksgiving

**All: For the great cloud of witnesses who join our voices  
Singing “Alleluia” to God of heaven and of earth.**

## † HYMN 326

For All the Saints

SINE NOMINE

## CALL TO CONFESSION

### AND PRAYER OF CONFESSION *(in unison)*

Almighty God, by your Holy Spirit you have made us one  
with all your children in heaven and on earth.

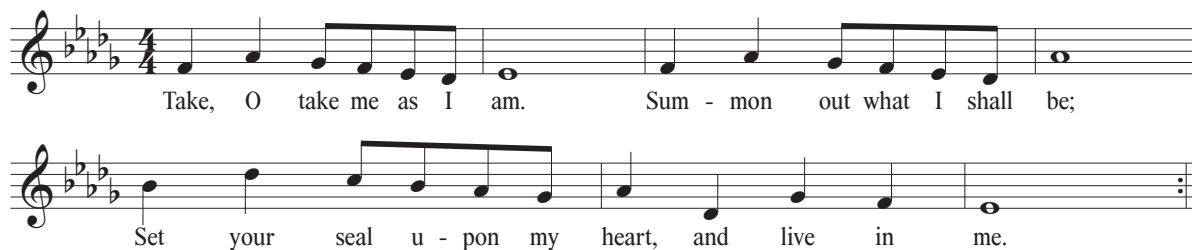
Forgive us when we fail to trust your word  
that nothing can separate us from your love,  
in heaven or on earth.

Guide us to rejoice with all your saints  
who ceaselessly proclaim your praise, through Christ our Savior.

*A moment of silence for personal reflection and confession.*

## ASSURANCE OF PARDON

## CONGREGATIONAL RESPONSE (*sung twice*)



Text and Music © 1995 WGRG, Iona Community (admin. GIA Publications, Inc.)  
All rights reserved. Reprinted under OneLicense.net #A-716211.

## HEARING THE WORD

**PRAYER FOR ILLUMINATION**

Doug McCone

**FIRST LESSON**

Psalm 146 (*p. 581 in pew Bible*)

Doug McCone

**SECOND LESSON**

Luke 19:1-10 (*p. 260 in pew Bible*)

Agnes W. Norfleet

One: The Word of the Lord.

All: **Thanks be to God.**

**SERMON**

*Little Saints*

Agnes W. Norfleet

† **HYMN 500**

Be Known to Us in Breaking Bread

ST. FLAVIAN

## RESPONSE TO THE WORD

**THE SACRAMENT OF THE LORD'S SUPPER**

Brian K. Ballard

*You are invited to come forward, using the center aisle, to partake of the Lord's Supper by intinction (dipping a piece of bread into the cup); return to your seat using the side aisle. Gluten- and casein-free elements are on the center table.*

*You are invited to bring your offering when you come forward.*

## THE INVITATION TO COMMUNION AND THE GREAT THANKSGIVING

One: The Lord be with you.

**All: And also with you.**

One: Lift up your hearts.

**All: We lift them to the Lord.**

One: Let us give thanks to the Lord our God.

**All: It is right to give our thanks and praise.**

## THE LORD'S PRAYER

Our Father who art in heaven, hallowed be thy name, thy kingdom come, thy will be done, on earth as it is in heaven. Give us this day our daily bread. And forgive us our trespasses, as we forgive those who trespass against us. And lead us not into temptation, but deliver us from evil. For thine is the kingdom, and the power, and the glory, forever. Amen.

## COMMUNION OF THE PEOPLE

### MUSIC AT COMMUNION

Pie Jesu  
Owen Yoder, baritone

Tom Shelton

Merciful Jesus, give them rest; Merciful Jesus Lord. Lamb of God, who takes away the sins of the world, merciful Jesus, give them rest eternally.

### PRAYER OF DEDICATION

Agnes W. Norfleet

† **HYMN 817**                      We Walk by Faith and Not by Sight                      DUNLAP'S CREEK

† **SENDING AND PASSING OF THE PEACE**

One: The peace of Christ be with you.

**All: And also with you.**

### POSTLUDE



## **Worship Notes**

### **SANCTUARY FLOWERS**

Given to the glory of God and in loving memory of  
John and Jean Africa

### **IN MEMORIAM**

William Evans  
Robert Austell  
Fred Hudson  
Josephine Soltis  
Susan Howard  
Joshua Thompson  
Edward Wilford  
Carson McClain  
Joann McSorley  
John Bogle  
Cornelia Bryans

William Lee  
Charles Soltis  
Eric Lacktman  
Lucy Burns  
Elizabeth Herman  
Margaret Bechtle  
Ruth Parker  
Marshall Vaughters  
Keith Weaver  
June Adelhelm  
William Heinsohn

Marjorie Boyer  
Louise Miller  
William Vogel  
Donald Dupler Jr.  
John Haeberlen  
Jean Dykstra  
Marjorie Helmetag  
Mary Jane Kleckner  
M. Robert Moyer

### **ASSISTING WITH COMMUNION**

Elder Doug McCone

### **USHERING**

Deacon Brian Kerr



*"I am the resurrection and the life."*

M. Robert (Bob) Moyer ~ Oct. 29, 2019

# **Announcements**

**BRYN MAWR GIVES: STEWARDSHIP 2020.** A week after Dedication Sunday and we already can thank so many of you who have pledged generously in support of our 2020 Stewardship Campaign, Bryn Mawr Gives! This week we note that our outreach in West Philadelphia is supported by your stewardship gifts. As a reminder, you may offer your pledge by mail, offering plate or online: <https://www.bmpc.org/giving/annual-stewardship>. Thank you!

**LOOKING FOR A CHURCH HOME?** Consider learning more about being in community here by attending our “Discover BMPC” orientation classes on Mondays, Nov. 25 and Dec. 2 at 7:00 p.m. in the Ministries Center. These two classes provide an opportunity to become acquainted, ask questions, and learn more about our church, our Presbyterian heritage, and our mission. Inquirers welcome, and childcare available with advance notice. Register online at [www.bmpc.org](http://www.bmpc.org) > Calendar > Open Registrations. [FranklynPottorff@bmpc.org](mailto:FranklynPottorff@bmpc.org).

**PARTICIPATE IN OUR CHRISTMAS EVE FAMILY SERVICE.** Calling all actors and readers! Children 4 years and older are invited to participate in the Christmas Eve family service on Dec. 24 at 4:30 p.m. in the Sanctuary. Deadline is Mon., Nov. 11. Contact [MaryRichards@bmpc.org](mailto:MaryRichards@bmpc.org) with the ages of children and if they would like to speak, read, or act.

**CHRISTMAS FLOWER DONATIONS.** Contributions may be given in three categories for listings in the Christmas Eve bulletin: “In memory of,” “In honor of,” or “In celebration of (marriage, retirement, birth, baptism).” Forms are available in the Ministries Center, in the back of the Sanctuary, or at [www.bmpc.org](http://www.bmpc.org). Monies received are used year-round for our floral decorations and Deacons’ flower ministry. Deadline: Sun., Nov. 24.

## **Today**

**ALL SAINTS SUNDAY WORSHIP SERVICE.** In observance of All Saints Sunday, the 10:00 a.m. worship service in the Sanctuary features special music by the Children’s Choir, Youth Chorale and Sanctuary Choir.

**STEEL CONTEMPLATION – ART IN THE CHILDREN’S CHAPEL.** Today and next Sunday, Nov. 10, you are invited to view a series of art pieces by BMPC member George Robert (Bob) Overhiser Jr., based on his first-hand experiences in New York City on September 11, 2001. Following 10:00 a.m. worship today, Bob will talk about his artwork in the Children’s Chapel.

## **This Week**

**HORIZONS BIBLE STUDY.** Wed., Nov. 6, 10:30 a.m., Rosemont Presbyterian Village Ballroom. The Rev. Brian Ballard leads Lesson 3, “Words of Love,” in *Love Carved in Stone*. Joyce Malott, [okf405@gmail.com](mailto:okf405@gmail.com).

**PASTOR'S BOOK GROUP.** Wed., Nov. 6, 6:30 p.m., Chapel. The Rev. Franklyn Pottorff leads a discussion of *Holy Envy: Finding God through the Faith of Others* by Barbara Brown Taylor. Taylor weaves together stories from the classroom with reflections on how her own spiritual journey has been complicated and renewed by connecting with people of other traditions — even those whose truths are quite different from hers. Books are available for purchase in the BMPC Book Center or Ministries Center Reception Desk for \$18.

**SANCTUARY CHOIR OPEN REHEARSALS.** Do you have questions about joining our Sanctuary Choir? On the first Thursday of every month we have an open rehearsal for visitors to drop in and try it out. Your next opportunity is Thurs., Nov. 7 at 7:00 p.m. in the Fine Arts Center. Contact StephanieSpeakman@bmpc.org if you plan to attend.

**HOLY LEISURE.** Fri., Nov. 8, 6:00-9:00 p.m., home of Claire Swarr, Wayne. Join old and new friends for potluck dinner, fellowship and a lively discussion with Leigh DeVries, Associate Pastor for Youth and Their Families. Register: <http://bit.ly/HolyLeisureNovember2019> and include the specific food or drink donation you are bringing.

**CASSEROLE BLITZ.** Sat., Nov. 9, 8:30 a.m., Main Kitchen. The Hunger Committee is making 130 casseroles (1,300 meals) for Philadelphia area food cupboards. Children over 4 years old are welcome. Bring your own apron or wear clothes appropriate for kitchen work. Registration requested: Sandie Nicholson, sandiekev@verizon.net.

## **Next Sunday**

**NEAR EAST SCHOOL OF THEOLOGY.** Sun., Nov. 10, 11:15 a.m., Chapel. Presentation by the Rev. Dr. George Sabra, President of NEST. Located in Beirut, Lebanon, it is one of the preeminent Christian seminaries in the Middle East. A long-term mission partner of BMPC, its staff works faithfully to train the next generation of clergy serving in Presbyterian Churches in Lebanon and Syria who face one of the greatest humanitarian crises of our generation.

## **Upcoming**

**Y-GROUP STOCKING DECORATION.** Tues., Nov. 12, 9:15-11:00 a.m., Congregational Hall. Share the joy of Christmas by decorating Christmas stockings for children and youth served by the Village. Abby Pottorff, [ygroupbmpc@gmail.com](mailto:ygroupbmpc@gmail.com).

**WINTERTHUR: THE CROWN.** Thurs., Nov. 14, 9:45 a.m. - 3:00 p.m. Bus departs from the back parking lot. Costuming “The Crown” features 40 iconic costumes from the Emmy® award-winning Netflix series, a dramatized history of the reign of Queen Elizabeth II. We begin the day with a guided tour of the Distinctive Collections, then on your own for lunch (or bring your own), tour “The Crown” collection and enjoy a tram tour of the gardens. The bus departs at 10:00 a.m. sharp and returns by 3:00 p.m. Price: \$20 per person; includes the tour and bus driver gratuity. Sign up with your check, payable to BMPC, by Nov. 7, or online: Calendar > Open Registrations > Register.



**ADVENT GIFT MARKET.** Sun., Nov. 17, 11:00-12:30 p.m., Congregational Hall. Join us for the opening Market Festival where representatives from the various committees and councils are present to answer questions about the chosen mission projects and AGM representatives take your orders on successive Sundays in the gymnasium. Orders also may be placed online at [www.bmpc.org](http://www.bmpc.org) starting Nov. 17.

**EVERYTHING YOU ALWAYS WANTED TO KNOW ABOUT RELIGION BUT WERE AFRAID TO ASK.** Sun., Nov. 17, 11:15 a.m., Chapel. The Rev. Dr. Paul MacMurray leads an informal conversation on the basics of Christian theology, the Bible and tradition, based on questions that participants bring to the class.

**ORDINATION & INSTALLATION OF OUR NEW ASSOCIATE PASTOR.** Sun., Nov. 17, 4:00 p.m., Sanctuary. Leigh DeVries, Pastor for Associate Youth & Their Families, is to be ordained and installed in a special worship service. Reception follows. Childcare is available by emailing [childcare@bmpc.org](mailto:childcare@bmpc.org) with your request.

**URBAN SUBURBAN BOOK GROUP.** Tues., Nov. 19, noon, Converse House Parlor. Discussion of *Where the Crawdads Sing* by Delia Owens. [JoanneHanna3@comcast.net](mailto:JoanneHanna3@comcast.net).

**BIBLE FROM SCRATCH.** Thurs., Nov. 21, 7:00 p.m., Loft. Led by the Rev. Rebecca Kirkpatrick. If you're ready to think about scripture in new and creative ways, this class is for you.

**ANNUAL THANKSGIVING PANCAKE BREAKFAST.** Thurs., Nov. 28, 8:30-11:30 a.m., Congregational Hall. Join us for "Pancakes for a Purpose" and enjoy fellowship and food at this annual event. All proceeds (\$5 per person) support the youth mission projects and trips.

**PRIME TIME ADVENT PARTY, FOR SINGLES AND COUPLES AGE 50+.** Sun., Dec. 8, 6:00-8:00 p.m., New location: Merion Tribute House (directions to be mailed). Register by Dec. 5 online at [www.bmpc.org](http://www.bmpc.org) > Calendar > Open Registrations or with a check for \$18/person (includes heavy hors d'oeuvres and beverages), attn: Monica Devane.

## **Caring & Sharing**

**FOOD DONATIONS NEEDED.** Donations have been *low*, and the need is *great*. Place donations in baskets in the Narthex or in the food cupboard in the hallway next to the elevators in the Ministries Center.

**TURKEY AND HAM COLLECTION.** Frozen turkeys and hams may be contributed for distribution by the Hunger Committee during November. Freezers are located in the hallway next to the elevator in the Ministries Center.

# **This Week's Calendar**

*For more information, visit our website at [www.bmpc.org](http://www.bmpc.org),  
call the church office, or contact [communications@bmpc.org](mailto:communications@bmpc.org).*

## **Today, November 3**

- 7:45 a.m. Childcare, Fullerton Room  
8:00 a.m. **Worship with Communion, Chapel**  
8:45 a.m. Digging Deeper, Main Line Adult Day Center, First Floor Living Room  
Filling the Well, Converse House Parlor  
Sunday Morning Discussion Group, Congregational Hall  
Art @ 9, Conference Room  
10:00 a.m. **Worship with Communion, Children's Choir, Youth Chorale,  
and Sanctuary Choir**  
Sunday School for age 2, Gloucester Room  
Sunday School for age 3, Witherspoon Parlor  
Sunday School for Pre-K, Middleton Center, Rm. 200  
Grades K - 3 Begin Worship in the Sanctuary  
Worship Together Sunday for Grades 4 - 12  
10:15 a.m. Sunday School for Grade K, Middleton Center, Rm. 202  
Sunday School for Grades 1 & 2, Congregational Hall  
Sunday School for Grade 3, Middleton Center, Rm. 301  
11:00 a.m. Coffee & Fellowship, Gymnasium  
11:30 a.m. Tintinnabulators, Fine Arts Center

## **Monday, November 4**

*No scheduled activities.*

## **Tuesday, November 5**

- 9:00 a.m. Repose Yoga, Gymnasium  
10:30 a.m. Tai Chi, Gymnasium  
1:00 p.m. Dance for Parkinson's Disease, Gymnasium  
7:00 p.m. Deacons Meeting, Chapel  
7:30 p.m. Boy Scout Committee Meeting, Pastors' Conference Room

### **Wednesday, November 6**

- 10:00 a.m. Women's Coffee Cup Bible Study, Congregational Hall
- 10:30 a.m. Horizons Bible Study, Rosemont Presbyterian Village Ballroom
- 4:45 p.m. Wednesdays Together (Grades K-5), Fine Arts Center
- 5:30 p.m. Wednesday Night Dinner, Congregational Hall
- 5:45 p.m. Youth Chorale (Grades 6-12), Fine Arts Center
- 6:30 p.m. Pastor's Book Group: *Holy Envy: Finding God through the Faith of Others*  
by Barbara Brown Taylor, Chapel
- 7:00 p.m. Student Serve, Loft  
Worldwide Ministries Committee Meeting, Converse House Parlor  
Music and Fine Arts Council, Fine Arts Center

### **Thursday, November 7**

- 9:15 a.m. Senior Exercise Class, Gymnasium
- 9:30 a.m. Singing for Life, Fine Arts Center
- 10:00 a.m. Artists' Gathering, Fine Arts Center
- 6:00 p.m. Refugee Support Committee Meeting, Congregational Hall
- 6:30 p.m. Boy Scout Court of Honor, Gymnasium
- 7:00 p.m. Sanctuary Choir and Bryn Mawr Chamber Singers, Fine Arts Center

### **Friday, November 8**

- 10:00 a.m. Senior Adult Council Meeting, Converse House Parlor
- 4:00 p.m. Children's Spanish Class, Gloucester Room and Witherspoon Parlor
- 6:00 p.m. Holy Leisure, Event is Off Campus

### **Saturday, November 9**

- 7:00 a.m. Saturday Morning Mens' Group, Converse House Parlor
- 8:30 a.m. Casserole Blitz, Congregational Hall Kitchen
- 10:00 a.m. Baptism Workshop, Fullerton Room  
Searching for Still Waters Bereavement Group, Middleton Center, Rm. 202

### **Sunday, November 10**

- 8:00 a.m. **Worship with Communion, Chapel**
- 10:00 a.m. **Worship with Sanctuary Choir, Sanctuary**  
The Rev. Dr. Agnes W. Norfleet will preach.  
Sunday School for age 2 - Grade 12.

## **Renovations Update**

**Daytime Traffic Patterns:** Each weekday from 7:00 a.m. until 2:00 p.m., the driveway between the Chapel and the Sanctuary will be *one way*, with cars exiting onto Montgomery Avenue. This adjustment allows for the safe movement of children from the Weekday School during drop-off and pick-up. Please use the driveway between the Ministries Center and the Sanctuary to enter the campus from Montgomery Avenue during these weekday hours.

For more renovation updates, please visit us at:  
**[www.bmpc.org/welcome/renovation-updates](http://www.bmpc.org/welcome/renovation-updates)**

*This box will be updated regularly to keep you informed about how the renovation process is impacting our ministries and programs.*



## **Worship Staff**

**Agnes W. Norfleet**, Pastor

**Brian K. Ballard**, Associate Pastor for Pastoral Care & Senior Adults

**Leigh DeVries**, Associate Pastor for Youth & Their Families

**Rebecca Kirkpatrick**, Associate Pastor for Adult Education & Mission

**Rachel Pedersen**, Associate Pastor for Children & Family Ministry

**Franklyn C. Pottorff**, Associate Pastor for Congregational Life & Stewardship

**Jeffrey Brillhart**, Director of Music & Fine Arts

**Edward Landin Senn**, Assistant Director of Music

## **Contact Information**



**Bryn Mawr Presbyterian Church**

625 Montgomery Avenue, Bryn Mawr, PA 19010

610-525-2821

[www.bmpc.org](http://www.bmpc.org)

[Facebook.com/BrynMawrPres](https://www.facebook.com/BrynMawrPres) • [Instagram.com/BrynMawrPres](https://www.instagram.com/BrynMawrPres)

24/7 Answering Service for Pastoral Emergencies: 610-525-2821

Main Line Adult Day Center: 610-527-4220

The Middleton Center: 610-525-0766 • [info@middletoncenter.org](mailto:info@middletoncenter.org)

The Weekday School (Preschool): 610-525-2821, ext. 8840