



Bryn Mawr Presbyterian Church

October 27, 2019
8:00 a.m., Chapel
Reformation Sunday

WELCOME TO BMPC

TODAY'S SCHEDULE

Childcare (infant - age 5)

7:45 a.m. - 12:30 p.m.

Fullerton Room, Ministries Center

8:00 a.m. Worship, Chapel

Digging Deeper

8:45 a.m., Main Line Adult
Day Center, First Floor

Filling the Well

8:45 a.m., Converse House
Parlor

Sunday Morning Discussion Group

8:45 a.m., Congregational Hall

Art @ 9

Ages 3 - Grade 5

8:45 a.m., Conference Room

10:00 a.m. Worship, Sanctuary

Sunday School

*See calendar at back of bulletin for
a complete schedule.*

NEW HERE? We are pleased that you are joining us as we worship God this morning. Information about our programs is available near the main entrance. We invite you to participate in any of our programs, ministries and mission opportunities, as they are open to all.

JOIN US FOR FELLOWSHIP. Stop by the Ministries Center Court for coffee between 8:00 - 10:00 a.m. and join us for Coffee and Fellowship in the Gym after the 10:00 a.m. Worship Service.

TO ASSIST YOU DURING WORSHIP. Children's bulletins with crayons may be found near the main entrance. If you are unable to come forward for Communion, please let an usher or server know, and Communion will be brought to you.

Subscribe to our BMPC eNews by adding your email address to the Fellowship Register.
For additional information about today's schedule, see the calendar at the back of this bulletin.

www.BMPC.org

GATHERING AROUND THE WORD

PRELUDE

WELCOME

Rachel Pedersen

† CALL TO WORSHIP

One: Let us come together in the presence of God,

All: One in faith and one in spirit.

One: For it is good to give thanks to the Lord,

All: To sing praises to God's name.

One: We come seeking new life,

All: Trusting in God's goodness and grace.

One: In gratitude and thanksgiving

All: Let us worship God with joyful songs of praise.

† HYMN 275

A Mighty Fortress Is Our God

EIN' FESTE BURG

CALL TO CONFESSION

AND PRAYER OF CONFESSION *(in unison)*

Loving God, we offer our praise for your wonderful gifts to us –

for your love that sustains us and binds us together as your people;

for your power that fills the earth and brings new life;

for your peace that takes away fear and brings us to hope.

Forgive us, O God, when we fail to trust in your presence,

and when we fail to trust in your purpose for our lives and for the world.

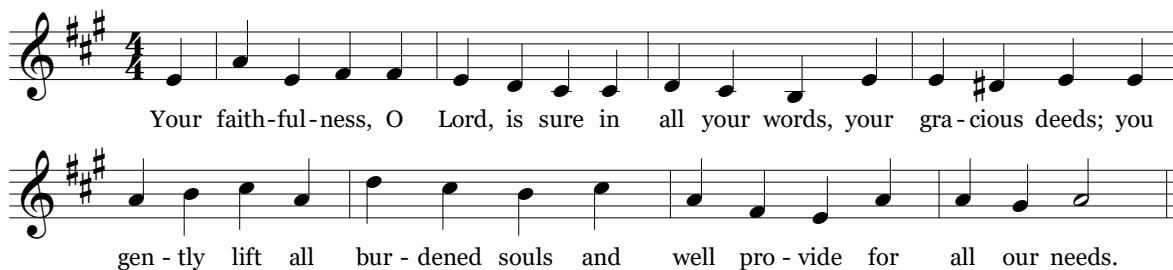
Help us to know how we are being called to discipleship,

that we may serve with gladness and joy, through Jesus Christ.

A moment of silence for personal reflection and confession.

ASSURANCE OF PARDON

CONGREGATIONAL RESPONSE



Music Arr. © 1986 GIA Publications, Inc. All rights reserved. Reprinted under OneLicense.net #A-716211.

HEARING THE WORD

PRAYER FOR ILLUMINATION

Sheryl Parente

FIRST LESSON

Genesis 32:3-12 (*p. 29 in pew Bible*)

Sheryl Parente

SECOND LESSON

Genesis 32:22-33:4 (*p. 30 in pew Bible*)

Agnes W. Norfleet

One: The Word of the Lord.

All: **Thanks be to God.**

SERMON

Wrestling with God

Agnes W. Norfleet

Final in the Family of God Sermon Series

† **HYMN 760**

Bring Many Names

WESTCHASE

RESPONSE TO THE WORD

THE SACRAMENT OF THE LORD'S SUPPER

Rachel Pedersen

You are invited to come forward, using the center aisle, to partake of the Lord's Supper by intinction (dipping a piece of bread into the cup); return to your seat using the side aisle. Gluten and casein-free elements are on the center table.

You are invited to bring your offering when you come forward.

THE INVITATION TO COMMUNION AND THE GREAT THANKSGIVING

One: The Lord be with you.

All: And also with you.

One: Lift up your hearts.

All: We lift them to the Lord.

One: Let us give thanks to the Lord our God.

All: It is right to give our thanks and praise.

THE LORD'S PRAYER

Our Father who art in heaven, hallowed be thy name, thy kingdom come, thy will be done, on earth as it is in heaven. Give us this day our daily bread. And forgive us our trespasses, as we forgive those who trespass against us. And lead us not into temptation, but deliver us from evil. For thine is the kingdom, and the power, and the glory, forever. Amen.

COMMUNION OF THE PEOPLE

† LITANY OF DEDICATION

Agnes W. Norfleet

The earth is the Lord's, and all that is in it.

We are stewards of creation, entrusted with God's gifts.

You call us to share joyfully, O God, with all of our resources.

We freely give our time, talent, and treasure for this good work.

We dedicate our offering and these pledges to you, as an act of faithfulness.

Help us to use them in ways that bless the world.

Expand our imaginations for generosity,

That together we may bear witness to your love for all in Jesus Christ.

† HYMN 36

For the Fruit of All Creation

AR HYD Y NOS

† SENDING AND PASSING OF THE PEACE

One: The peace of Christ be with you.

All: And also with you.

POSTLUDE

Worship Notes

SANCTUARY FLOWERS

Given to the glory of God and in loving memory of
Frances O. and Edwin M. Ross

ASSISTING WITH COMMUNION

Deacon Sheryl Parente

USHERING

Elder Keith Brinks

SERMON SERIES & BULLETIN COVER

The Family of God series considers God's promise made to Abraham and Sarah: *in you all the families of the earth shall be blessed*. John August Swanson's *Festival of Lights* is reminiscent of this blessing, described as children gathered from many places bringing light and peace in an unending procession of nonviolence for all the children of the world.

†

"I am the resurrection and the life."

Marjorie Helmetag ~ October 8, 2019

Announcements

BRYN MAWR GIVES: STEWARDSHIP 2020. Today is Dedication Sunday, where we offer up to God a portion of our time, talents and treasure to support the work and ministry of BMPC in 2020. God shapes us in community to send us out in service to the world. Please place your completed pledge cards in the offering plate; to pledge or donate online: <https://www.bmpc.org/giving/annual-stewardship>. SarahMiciek@bmpc.org.

WEEKDAY SCHOOL REGISTRATION. Applications for the 2020-2021 school year are now being accepted. BMPC members have priority in placement through Oct. 31. Programs are available for children ages 2 years and 7 months to 5 years. For more information, contact Kim Black at 610-520-8840 or by email; weekdayschool@bmpc.org.

PARTICIPATE IN OUR CHRISTMAS EVE FAMILY SERVICE. Calling all actors and readers! Children 4 years and older are invited to participate in the Christmas Eve family service on Dec. 24 at 4:30 p.m. in the Sanctuary. Deadline is *Mon., Nov. 11*. Contact MaryRichards@bmpc.org with the ages of children and if they would like to speak, read, or act.

SANCTUARY FLOWER OPENING. For those interested in honoring a deceased loved one or celebrating an important milestone, we have space available for a flower arrangement in our Sanctuary on Sun., Nov. 10. Following the worship service, flowers are used by our Deacons to create smaller arrangements that are delivered to members unable to attend worship. For flower reservation: DKPetrovitch@gmail.com.

This Sunday

LUNCH & LEARN WITH BETH KEPHART. 11:15 a.m., Congregational Hall. Daughter of BMPC member Kep Kephart, Beth is an award-winning author and speaker. In addition to publishing 22 books, her writings have appeared in publications including The New York Times and The Philadelphia Inquirer. Beth's talk at BMPC focuses on the art and value of written memoir.

STEEL CONTEMPLATION – ART IN THE CHILDREN'S CHAPEL. Today through Nov. 10, you are invited to view a series of art pieces by BMPC member George Robert (Bob) Overhiser Jr., based on his first-hand experiences in New York City on September 11th. Following 10:00 a.m. worship on Sun., Nov. 3, Bob will talk about his artwork in the Children's Chapel.

YOUTH SABBATH. 6:00 - 7:30 p.m., Loft. Come join us for Youth Sabbath, led by our very own Timothy Wotring, for a time of rest, community, and remembering that our identities are not just in our accomplishments! Dinner provided.

This Week

Y-GROUP BOOK STUDY. Mon., Oct. 28, 7:00 p.m., Loft. *A Case for Kindness: 40 Ways to Love and Inspire Others* by Lisa Barrickman. Join us for a conversation with the author about how we act with kindness in our everyday lives. Abby Pottorff, ygroupbmpe@gmail.com.

Next Sunday

ALL SAINTS SUNDAY WORSHIP SERVICE. Sun., Nov. 3, 10:00 a.m., Sanctuary. To observe All Saints Sunday, the 10:00 a.m. worship service features special music by the Children's Choir, Youth Chorale and Sanctuary Choir.

Upcoming

HORIZONS BIBLE STUDY. Wed., Nov. 6, 10:30 a.m., Rosemont Presbyterian Village Ballroom. The Rev. Brian Ballard leads Lesson 3, "Words of Love," in *Love Carved in Stone*. Joyce Malott, okf405@gmail.com.

PASTOR'S BOOK GROUP. Wed., Nov. 6, 6:30 p.m., Chapel. The Rev. Franklyn Pottorff leads a discussion of *Holy Envy: Finding God through the Faith of Others* by Barbara Brown Taylor. Taylor weaves together stories from the classroom with reflections on how her own spiritual journey has been complicated and renewed by connecting with people of other traditions — even those whose truths are quite different from hers. Books are available for purchase in the BMPC Book Center for \$18.

HOLY LEISURE. Fri., Nov. 8, 6:00-9:00 p.m., home of Claire Swarr, Wayne. Join old and new friends for potluck dinner, fellowship and a lively discussion with Leigh DeVries, Associate Pastor for Youth and Their Families. Register: <http://bit.ly/HolyLeisureNovember2019> and include the specific food or drink donation you are bringing.

NEAR EAST SCHOOL OF THEOLOGY. Sun., Nov. 10, 11:15 a.m., Chapel. Presentation by the Rev. Dr. George Sabra, President of NEST. Located in Beirut, Lebanon, it is one of the preeminent Christian seminaries in the Middle East. A long-term mission partner of BMPC, its staff works faithfully to train the next generation of clergy serving in Presbyterian Churches in Lebanon and Syria who face one of the greatest humanitarian crises of our generation.

Y-GROUP STOCKING DECORATION. Tues., Nov. 12, 9:15-11:00 a.m., Congregational Hall. Share the joy of Christmas by decorating Christmas stockings for children and youth served by the Village. Abby Pottorff, ygroupbmpe@gmail.com.

WINTERTHUR: THE CROWN. Thurs., Nov. 14, 9:45 a.m. - 3:00 p.m. Bus departs from the back parking lot. Costuming “The Crown” features 40 iconic costumes from the Emmy® award-winning Netflix series, a dramatized history of the reign of Queen Elizabeth II. We begin the day with a guided tour of the Distinctive Collections, then on your own for lunch (or bring your own), tour “The Crown” collection and enjoy a tram tour of the gardens. The bus departs at 10:00 a.m. sharp and returns by 3:00 p.m. Price: \$20 per person; includes the tour and bus driver gratuity. Sign up with your check, payable to BMPC, by Nov. 7, or online: Calendar > Open Registrations > Register. AmyBauer@bmpc.org.

ADVENT GIFT MARKET. Sun., Nov. 17, 11:00-12:30 p.m., Congregational Hall. Join us for the opening Market Festival where representatives from the various committees and councils will be present to answer questions about the chosen mission projects. AGM representatives will be in the Court to take your orders on successive Sundays. Orders also may be placed online at www.bmpc.org.

EVERYTHING YOU ALWAYS WANTED TO KNOW ABOUT RELIGION BUT WERE AFRAID TO ASK. Sun., Nov. 17, 11:15 a.m., Chapel. The Rev. Dr. Paul MacMurray leads an informal conversation on the basics of Christian theology, the Bible and tradition, based on questions that participants bring to the class.

ANNUAL THANKSGIVING PANCAKE BREAKFAST. Thurs., Nov. 28, 8:30-11:30 a.m., Congregational Hall. Join us for “Pancakes for a Purpose” and enjoy fellowship and food at this annual event. All proceeds (\$5 per person) support the youth mission projects and trips. AmyBauer@bmpc.org.

Caring & Sharing

FOOD DONATIONS NEEDED. Donations have been *low*, and the need is *great*. Place donations in baskets in the Narthex or in the food cupboard in the hallway next to the elevators in the Ministries Center.

PEACEMAKING COMMITTEE FUNDS. Proposals are accepted for small funding amounts (\$500-\$700) with a focus on international organizations doing peace-building work. The application can be found at <http://bit.ly/BMPCGrants> or contact Phoebe Sheftel, pasheftel@gmail.com. Submission deadline is Thurs., Oct. 31.

OUTREACH GRANT DEADLINE. If you know of a non-profit organization that might be interested in applying for a grant through our Outreach committee, direct it to our website: <http://bit.ly/BMPCGrants>. Submission deadline is Fri., Nov. 1.

TURKEY AND HAM COLLECTION. Frozen turkeys and hams may be contributed for distribution by the Hunger Committee during November. Freezers are located in the hallway next to the elevator in the Ministries Center Court.

CASSEROLE BLITZ. Sat., Nov. 9, 8:30 a.m., Main Kitchen. The Hunger Committee is making 130 casseroles (1,300 meals) for Philadelphia area food cupboards. Children over 4 years old are welcome. Bring your own apron or wear clothes appropriate for kitchen work. Registration requested: Sandie Nicholson, sandiekev@verizon.net.

This Week's Calendar

*For more information, visit our website at www.bmpc.org,
call the church office, or contact communications@bmpc.org.*

Today, October 27

- 7:45 a.m. Childcare, Fullerton Room
8:00 a.m. **Worship with Communion, Chapel**
8:45 a.m. Digging Deeper, Main Line Adult Day Center, First Floor Living Room
Filling the Well, Converse House Parlor
Sunday Morning Discussion Group, Congregational Hall
Art @ 9, Conference Room
10:00 a.m. **Worship with Sanctuary Choir, Sanctuary**
Sunday School for age 2, Gloucester Room
Sunday School for age 3, Witherspoon Parlor
Sunday School for Pre-K, Middleton Center, Rm. 200
Grades K - 5 Begin Worship in the Sanctuary
Youth Gathering (Grades 6-12), Gymnasium
10:15 a.m. Sunday School for Grade K, Middleton Center, Rm. 202
Sunday School for Grades 1 & 2, Congregational Hall
Sunday School for Grade 3, Middleton Center, Rm. 301
Sunday School for Grades 4-5, Converse House Parlor
10:30 a.m. Grades 6 & 7 Connection Group, Main Line Adult Day Center
Grade 8 Confirmation, Loft
Grades 9 & 10 Connection Group, Gymnasium Stage
Grades 11 & 12 Connection Group, Pastors' Conference Room
11:00 a.m. Coffee & Fellowship in the Gym, Gymnasium
11:15 a.m. Child & Youth Protection Training, Loft
Lunch & Learn with Beth Kephart, Congregational Hall
11:30 a.m. Tintinnabulators, Fine Arts Center
6:00 p.m. Youth Sabbath (Grades 6-12), Loft

Monday, October 28

- 9:30 a.m. Clergy Colleague Group, Middleton Center, Rm. 202

Tuesday, October 29

- 9:00 a.m. Repose Yoga, Gymnasium
10:30 a.m. Tai Chi, Gymnasium
1:00 p.m. Dance for Parkinson's Disease, Gymnasium
6:45 p.m. Tutoring, Congregational Hall

Wednesday, October 30

- 10:00 a.m. Women's Coffee Cup Bible Study, Congregational Hall
4:45 p.m. Wednesdays Together (Grades K-5), Fine Arts Center
5:30 p.m. Wednesday Night Dinner, Congregational Hall
5:45 p.m. Youth Chorale (Grades 6-12), Fine Arts Center
7:00 p.m. Student Serve, Loft
Mission Council Meeting, Converse House Parlor

Thursday, October 31

- 8:45 a.m. Walk & Talk, Ashbridge Memorial Park, Bryn Mawr
9:15 a.m. Senior Exercise Class, Gymnasium
9:30 a.m. Singing for Life, Fine Arts Center
10:00 a.m. Artists' Gathering, Fine Arts Center
7:00 p.m. Boy Scout Troop 19, Gymnasium
Sanctuary Choir and Bryn Mawr Chamber Singers, Fine Arts Center

Friday, November 1

- 4:00 p.m. Children's Spanish Class, Gloucester Room and Witherspoon Parlor

Saturday, November 2

- 7:00 a.m. Saturday Morning Men's Group, Converse House Parlor

Sunday, November 3

- 8:00 a.m. **Worship with Communion, Chapel**
10:00 a.m. **Worship with Communion, Children's Choir, Youth Chorale, and Sanctuary Choir, Sanctuary**
The Rev. Dr. Agnes W. Norfleet will preach.
Worship Together Sunday for Children & Youth in Grades 4 - 12.

Renovations Update

Daytime Traffic Patterns: Each weekday from 7:00 a.m. until 2:00 p.m., the driveway between the Chapel and the Sanctuary will be *one way*, with cars exiting onto Montgomery Avenue. This adjustment allows for the safe movement of children from the Weekday School during drop-off and pick-up. Please use the driveway between the Ministries Center and the Sanctuary to enter the campus from Montgomery Avenue during these weekday hours.

For more renovation updates, please visit us at:
www.bmpc.org/welcome/renovation-updates

This box will be updated regularly to keep you informed about how the renovation process is impacting our ministries and programs.



Worship Staff

Agnes W. Norfleet, Pastor

Brian K. Ballard, Associate Pastor for Pastoral Care & Senior Adults

Leigh DeVries, Associate Pastor for Youth & Their Families

Rebecca Kirkpatrick, Associate Pastor for Adult Education & Mission

Rachel Pedersen, Associate Pastor for Children & Family Ministry

Franklyn C. Pottorff, Associate Pastor for Congregational Life & Stewardship

Jeffrey Brillhart, Director of Music & Fine Arts

Edward Landin Senn, Assistant Director of Music

Contact Information



Bryn Mawr Presbyterian Church

625 Montgomery Avenue, Bryn Mawr, PA 19010

610-525-2821

www.bmpc.org

[Facebook.com/BrynMawrPres](https://www.facebook.com/BrynMawrPres) • [Instagram.com/BrynMawrPres](https://www.instagram.com/BrynMawrPres)

24/7 Answering Service for Pastoral Emergencies: 610-525-2821

Main Line Adult Day Center: 610-527-4220

The Middleton Center: 610-525-0766 • info@middletoncenter.org

The Weekday School (Preschool): 610-525-2821, ext. 8840