

*A pen and ink vignette of one of the stained glass windows in the east transept which depicts Psalm 23.*

## ***Bryn Mawr Presbyterian Church***

July 12, 2015  
8:00 a.m., Chapel  
Seventh Sunday after Pentecost

# **Welcome to BMPC**

*Lord, Your word is a lamp to my feet and a light to my path.*

**NEW HERE?** Please introduce yourself to a pastor after the service. Though many of our activities are on summer hiatus, we'd be glad to acquaint you with this church and its programs and ministries – whether current or upcoming in September. You are welcome to participate according to your interests and we hope you will return often.

## **TODAY'S SCHEDULE FOR CHILDREN AND YOUTH:**

**Childcare:** 7:45 - 11:15 a.m., Ed. Bldg. Rm. 102

**Nursery Care with special activities for ages 2 and 3:**  
10:00 a.m., Ed. Bldg., Rm. 102

**“Summer Chapel” for age 4 - grade 3:** 10:15 a.m., Ed.  
Bldg., Rm. 202

(10:00-10:15 a.m. families worship together in the Sanctuary)

*If this is your first Sunday, please accompany your child.*

**Grades 4-12:** in worship, Sanctuary.



*“I am the resurrection and the life.”*

John M. (Jack) Moon ~ July 3, 2015  
Margaret E. (Betty) Huish ~ July 7, 2015

## **Worship Staff:**

Agnes W. Norfleet, Head Pastor

Rebecca Kirkpatrick, Associate Pastor for Adult Education & Mission

Rachel Pedersen, Associate Pastor for Children and Family Ministry

Kellen A. Smith, Associate Pastor for Youth, Their Families and College Ministries

Richard Wohlschlaeger, Interim Associate Pastor for Senior Adults & Pastoral Care

Jeffrey Brillhart, Director of Music and Fine Arts

Edward L. Landin, Assistant Director of Music

# GATHERING AROUND THE WORD

## PRELUDE

## WELCOME

Agnes W. Norfleet

*Please fill in the Fellowship Register at the end of your pew.*

## † CALL TO WORSHIP

One: We come to worship like Abraham and Sarah, Esther and Ezekiel—  
people with vision.

**All: We come, like the Samaritan woman at the well and Thomas—  
people with questions.**

One: We come, like Moses and Mary—  
people with self-doubts.

**All: We come, like Joshua, Deborah and Stephen—  
people with courage.**

One: We come, like David and Mary Magdalene—  
people with sadness and sin in our memories.

**All: We come, like Rebekah and Samuel, like Hosea and Elizabeth,  
like Nathaniel and Martha, like John Mark and Priscilla—  
people with a part to play in the story of faith.**

One: Surrounded by so great a cloud of witnesses, let us worship God.

## † HYMN 482

Praise Ye the Lord, the Almighty

LOBE DEN HERREN

## CALL TO CONFESSION

### AND PRAYER OF CONFESSION *(in unison)*

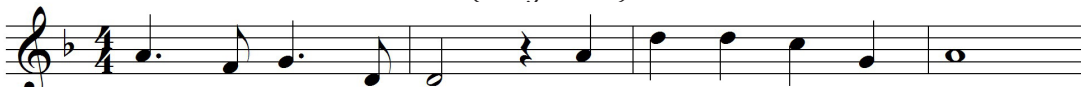
Rebecca Kirkpatrick

Loving God, you call us to obedience. But we are reluctant and make excuses. You teach us to be truthful, but we are not always truthful. You teach us to share what we have been given, but we accumulate more and more. Forgive us, O God. Teach us the wisdom to seek you, knowing you are always present for us.

*A moment of silence for personal reflection and confession.*

## ASSURANCE OF PARDON

### CONGREGATIONAL RESPONSE *(sung twice)*



Bless the Lord, my soul, and bless God's ho - ly name.



Bless the Lord, my soul, who leads me in - to life.

*Text and Music © 1984, 1998 Les Presses de Taizé (admin. GIA Publications, Inc.)  
All rights reserved. Reprinted under OneLicense.net #A-716211*

† *Please stand, if able.*

# HEARING THE WORD

## PRAYER FOR ILLUMINATION

Tim Bickhart

**FIRST LESSON**      Jeremiah 23:1-5 (*p. 725 in pew Bible*)

Tim Bickhart

**SECOND LESSON**    2 Samuel 11:1-15, 26-27 (*p. 284 in pew Bible*) Agnes W. Norfleet

One:    The Word of the Lord.

All:    **Thanks be to God.**

## SERMON

*David and Bathsheba*  
*Fourth in Summer Series on King David*

Agnes W. Norfleet

# RESPONDING TO THE WORD

† **HYMN 223**

O My Soul, Bless Your Redeemer

STUTTGART

## SACRAMENT OF THE LORD'S SUPPER

Rebecca Kirkpatrick

*You are invited to come forward, using the center aisle, to partake of the Lord's Supper by intinction (dipping a piece of bread in the cup); return to your seat using the side aisle.*

*Gluten- and casein-free elements are on the center table.*

*You are invited to bring your morning offering to the baskets when you come forward.*

## THE INVITATION TO COMMUNION AND THE GREAT THANKSGIVING

One:    The Lord be with you.

All:    **And also with you.**

One:    Lift up your hearts.

All:    **We lift them to the Lord.**

One:    Let us give thanks to the Lord our God.

All:    **It is right to give our thanks and praise.**

## THE LORD'S PRAYER (*in unison*)

Our Father who art in heaven, hallowed be thy name, thy kingdom come, thy will be done, on earth as it is in heaven. Give us this day our daily bread. And forgive us our trespasses, as we forgive those who trespass against us. And lead us not into temptation, but deliver us from evil. For thine is the kingdom, and the power, and the glory, forever. Amen.

## THE COMMUNION OF THE PEOPLE

## PRAYER OF DEDICATION

Agnes W. Norfleet



† **SENDING AND PASSING OF THE PEACE**

One: The peace of Christ be with you.

All: **And also with you.**

**POSTLUDE**

**Worship Notes**

**SANCTUARY FLOWERS**

Given to the glory of God and in loving memory of John W. Bickhart

**CHAPEL GARDEN FLOWERS**

Given to the glory of God and in loving memory of Debbie Craig

**PLAYING THE CARILLON**

Dianne Heard

**WELCOME THE REV. REBECCA KIRKPATRICK**

at Lemonade on the Lawn (weather permitting) following the 10:00 a.m. service.

Greeting and hosting today are

Representatives of Associate Pastor Nominating Committee  
for Adult Education & Mission.

**ASSISTING WITH COMMUNION**

Deacon Tim Bickhart

# **Announcements**

**STAFF NEWS.** Parish Nurse Ann Fossum, a long-time BMPC member, is retiring as of July 24. She and her husband are looking forward to enjoying their home in Florida. Sue Gibbons, also a long-time BMPC member, is retiring from her volunteer position as Shared Ministries Coordinator. She plans to enjoy more time with her grandchildren in Massachusetts. We are grateful to both of these faithful individuals for their years of service to BMPC as church members and as members of the staff team.

**DONATE SANCTUARY FLOWERS.** On Sunday, August 23, 2015, there is an opening for a donor of sanctuary flowers. Contact Ruth Miller Cox, 610-446-1595.

**SING WITH OUR SUMMER CHOIR.** All singers (ages 12 to adults) are invited for a short rehearsal on Sundays at 9:00 a.m. in the choir loft, then to stay and sing for the 10:00 a.m. service. Summer choir is simple (one anthem and hymns), and informal (no robes). Come when you can; no need to sign up in advance. StephanieSpeakman@bmpc.org, ext. 8836.

**YOUTH SUMMER TRIPS STILL OPEN.** AmyBauer@bmpc.org, ext. 8821

- **MIDDLE SCHOOL URBAN PLUNGE IN NYC.** July 26 – 31, for 6th to rising 8th graders. We're taking the Plunge to the city that never sleeps! We'll be hosted by a church in Manhattan and spend the days doing meaningful service with local organizations. At night, we'll enjoy the sights and sounds of NYC, including a Broadway show. Cost: \$449.
- **CAMP KIRKWOOD 2015.** August 9 – 15. For rising 6th to rising 12th graders. Kirkwood is not just a "week away" in the Poconos. It's a week full of fun, friends, and faith! There are opportunities for archery, arts and crafts, high ropes, and free time to hang out with friends. With worship and small groups, Camp Kirkwood is an unforgettable week. Cost: \$599.

**BOOK RECOMMENDATIONS.** Pick up the latest list of book recommendations at the Book Center in the Ministries Center and while you're there, choose a book for summer reading. Our Book Center is accessible on weekdays from 9:00 a.m. to 5:00 p.m. (the key is available at the Reception Desk). You also may borrow books from our Converse House Library. Kat MacMurray, KatRMac2@gmail.com.

**REQUEST PASTORAL CARE.** Our Care Team is available for home and hospital visits and prayer. You may submit prayer requests on the cards found in the pew racks or visit [www.bmpc.org/prayer](http://www.bmpc.org/prayer). LorieBenovic@bmpc.org, ext. 8833.

**HABITAT PHILADELPHIA'S NEWEST ReSTORE.** The ReStore, 2318 Washington Avenue, Philadelphia, is open to accept household items Wednesdays through Saturdays 9:00 a.m. to 5:00 p.m. CarolSchmidt@bmpc.org, ext. 8819 or [www.HabitatPhiladelphia.org](http://www.HabitatPhiladelphia.org).

## Upcoming

**BIBLE FOR BEGINNERS.** Thurs., July 16, 7:00 – 8:30 p.m., Gloucester Room. Led by the Rev. Dr. Agnes Norfleet. Reading assignment: Exodus, chapters 1-19. Anita Iyengar, [aciyengar@gmail.com](mailto:aciyengar@gmail.com), 610-645-6044.

## Today

**SUMMER SUNDAY SCHOOL.** Care is available for infants through 3-year-olds in the nursery, Ed. Bldg. Rm. 102, at 10:00 a.m. with special activities and a story, while children age 4 – grade 3 worship together in Ed. Bldg. Rm. 202 at 10:15 a.m. (after the Childrens' Moment in the Sanctuary). Please pick up your children in the Ed. Bldg. at 11:00 a.m. before “Lemonade on the Lawn.” [MaryRichards@bmpe.org](mailto:MaryRichards@bmpe.org), ext. 8811.

**SUNDAY MORNING DISCUSSION GROUP.** Sundays, 8:45 a.m., Conference Room. Discussion of *Falling Upward – A Spirituality for the Two Halves of Life* by Richard Rohr. [CarolSchmidt@bmpe.org](mailto:CarolSchmidt@bmpe.org), ext. 8819.

**SUMMER TED TALKS RETURN NEXT WEEK.** 11:15 a.m., Witherspoon Parlor. No class today as we welcome the Rev. Rebecca Kirkpatrick and her family. On July 19: Dr. John Alston, Founder of Chester Charter School for the Arts.

**ASSIST WITH THE INTERFAITH HOSPITALITY NETWORK.** IHN guests will arrive today and stay until July 19. If you are able to assist by preparing and serving dinner or spending the night, contact Barbara Heaton, [BarbaraHHeaton@gmail.com](mailto:BarbaraHHeaton@gmail.com), 610-667-2197 or [AmyBauer@bmpe.org](mailto:AmyBauer@bmpe.org), ext. 8821.

## Caring & Sharing

**HELP WITH SUMMER SUNDAY SCHOOL.** Choose a date to share a story with our 2 and 3-year-olds in the nursery or help us worship together at “Summer Chapel” for ages 4 - 10. [MaryRichards@bmpe.org](mailto:MaryRichards@bmpe.org), ext. 8811.

**OPPORTUNITIES TO SERVE WITH THE PASTORAL CARE OFFICE.** Provide rides for older adults, meals to those recuperating, knit prayer shawls for those in need of prayer, visit the homebound. Contact: [loriebenovic@bmpe.org](mailto:loriebenovic@bmpe.org) or ext. 8833.

**FEED THE HUNGRY.** Your contributions to the white hunger envelopes in the pews provide food for emergency food cupboards, homeless shelters, and hunger relief organizations in our area.

**NEED A RIDE?** We can help you with some of your transportation needs. For rides to medical appointments call Lorie Benovic, ext 8833. Volunteer drivers welcome.

# **This Week's Calendar**

***For more information visit our website at [www.bmpc.org](http://www.bmpc.org), call the church office (610-525-2821), or contact [communications@bmpc.org](mailto:communications@bmpc.org).***

## **Today, July 12, 2015**

The Rev. Dr. Agnes W. Norfleet, preaching  
8:00 a.m. Worship with Communion, Chapel  
10:00 a.m. Worship, Sanctuary  
7:45 a.m. Childcare for infants - age 3, Ed. Bldg. Rm. 102 (through 11:00 a.m.)  
8:45 a.m. Sunday Morning Discussion Group, Conference Room  
10:00 a.m. Grades 4 - 12 in worship, Sanctuary  
10:15 a.m. Sunday School: "Summer Chapel" age 4 - grade 3, Ed. Bldg.  
11:00 a.m. Welcome for Rebecca Kirkpatrick at Lemonade on the Lawn (parents pick up children in Ed. Bldg.)  
2:00 p.m. Interfaith Hospitality Network, Crypt, Fullerton Room

## **Monday, July 13, 2015**

9:30 a.m. Dance Fit, Gymnasium  
5:00 p.m. Interfaith Hospitality Network, Crypt, Fullerton Room

## **Tuesday, July 14, 2015**

10:30 a.m. Tai Chi, Gymnasium  
12:45 p.m. Parkinson Disease Support Group, Witherspoon Parlor  
4:30 a.m. Upward Basketball Summer Nights, Gymnasium  
5:00 p.m. Interfaith Hospitality Network, Crypt, Fullerton Room

## **Wednesday, July 15, 2015**

8:00 a.m. Weekday Contemplative Prayer Group, Chapel  
2016 Stewardship Committee, Conference Room  
9:00 a.m. Walk for Life, meet in Main Parking Lot  
9:30 a.m. Dance Fit, Gymnasium  
5:00 p.m. Interfaith Hospitality Network, Crypt, Fullerton Room  
7:00 p.m. Middleton Center Marketing Committee, Gloucester Room

## **Thursday, July 16, 2015**

10:00 a.m. Artists' Gathering, Gloucester  
2:30 p.m. Main Line Adult Day Center Board, Conference Room  
5:00 p.m. Interfaith Hospitality Network, Crypt, Fullerton Room  
6:00 p.m. Boy Scouts Troop 19, Gymnasium  
7:00 p.m. Bible for Beginners, Gloucester

## **Friday, July 17, 2015**

9:30 a.m. Dance Fit, Gymnasium  
5:00 p.m. Interfaith Hospitality Network, Crypt, Fullerton Room

## **Saturday, July 18, 2015**

9:00 a.m. Presbyterian Records Review, Conference Room  
10:00 a.m. Baptism Workshop, Converse House Parlor  
5:00 p.m. Interfaith Hospitality Network, Crypt, Fullerton Room

## **Sunday, July 19, 2015: Baptism Sunday**

The Rev. Dr. Agnes W. Norfleet, preaching

# **Contact Information**

## **Bryn Mawr Presbyterian Church**

625 Montgomery Avenue, Bryn Mawr, PA 19010

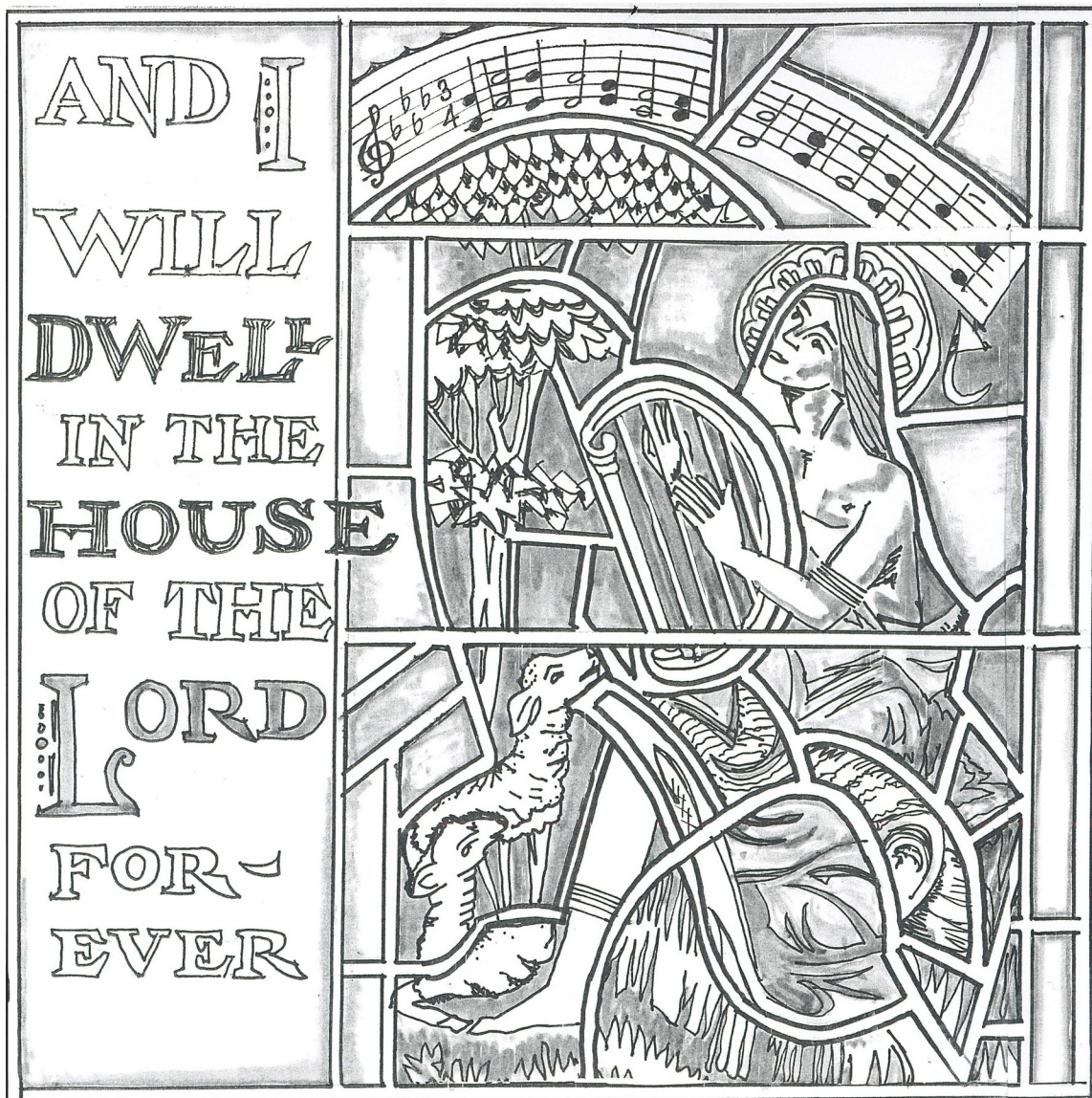
(P) 610-525-2821 • (F) 610-525-9476

[www.bmpc.org](http://www.bmpc.org) (for program information, calendar, and staff directory)

[Facebook.com/BrynMawrPC](https://www.facebook.com/BrynMawrPC) • [Twitter.com/BrynMawrPres](https://twitter.com/BrynMawrPres)

24/7 Answering Service for Pastoral Emergencies: 610-525-2821





*A pen and ink vignette of one of the stained glass windows in the east transept which depicts Psalm 23.*

## ***Bryn Mawr Presbyterian Church***

July 12, 2015  
10:00 a.m., Sanctuary  
Seventh Sunday after Pentecost

# **Welcome to BMPC**

*Lord, Your word is a lamp to my feet and a light to my path.*

**NEW HERE?** Stop by the information alcove near the main entrance to learn more about us or ask questions. Although many of our activities are on summer hiatus, we'd be glad to acquaint you with our programs and ministries – whether current or upcoming in September. You are welcome to participate according to your interests and we hope you will return often.

## **TODAY'S SCHEDULE FOR CHILDREN AND YOUTH:**

**Childcare:** 7:45 - 11:15 a.m., Ed. Bldg. Rm. 102

**Nursery Care with special activities for age 2 - 3:**

10:00 a.m., Ed. Bldg., Rm. 102

**“Summer Chapel” for age 4 - grade 3:** 10:15 a.m., Ed. Bldg., Rm. 202

(10:00-10:15 a.m. families worship together in the Sanctuary)

*If this is your first Sunday, please accompany your child.*

**Grades 4-12:** in worship, Sanctuary.



*“I am the resurrection and the life.”*

John M. (Jack) Moon ~ July 3, 2015

Margaret E. (Betty) Huish ~ July 7, 2015

## **Worship Staff:**

Agnes W. Norfleet, Head Pastor

Rebecca Kirkpatrick, Associate Pastor for Adult Education & Mission

Rachel Pedersen, Associate Pastor for Children and Family Ministry

Kellen A. Smith, Associate Pastor for Youth, Their Families and College Ministries

Richard Wohlschlaeger, Interim Associate Pastor for Senior Adults & Pastoral Care

Jeffrey Brillhart, Director of Music and Fine Arts

Edward L. Landin, Assistant Director of Music

# GATHERING OF GOD'S PEOPLE

## PRELUDE

Prelude on *Hyfrydol*  
Aria

Craig Phillips  
Craig Phillips

## \* WELCOME

Richard Wohlschlaeger

## † CALL TO WORSHIP

One: We come to worship like Abraham and Sarah, Esther and Ezekiel—  
people with vision.

**All: We come, like the Samaritan woman at the well and Thomas—  
people with questions.**

One: We come, like Moses and Mary—  
people with self-doubts.

**All: We come, like Joshua, Deborah and Stephen—  
people with courage.**

One: We come, like David and Mary Magdalene—  
people with sadness and sin in our memories.

**All: We come, like Rebekah and Samuel, like Hosea and Elizabeth,  
like Nathaniel and Martha, like John Mark and Priscilla—  
people with a part to play in the story of faith.**

One: Surrounded by so great a cloud of witnesses, let us worship God.

## † HYMN 482

Praise Ye the Lord, the Almighty

LOBE DEN HERREN

## CALL TO CONFESSION

### AND PRAYER OF CONFESSION *(in unison)*

Loving God, you call us to obedience. But we are reluctant and make excuses. You teach us to be truthful, but we are not always truthful. You teach us to share what we have been given, but we accumulate more and more. Forgive us, O God. Teach us the wisdom to seek you, knowing you are always present for us.

*A moment of silence for personal reflection and confession.*

## ASSURANCE OF PARDON

## \*† GLORIA PATRI *(in unison)*

*(Hymnal 579)*

Glory be to the Father and to the Son and to the Holy Ghost; as it was in the beginning, is now and ever shall be, world without end. Amen, Amen.

*Children are invited to come forward for the Children's Moment*

# PROCLAMATION OF THE WORD

## CHILDREN'S MOMENT

Rachel Pedersen

## SENDING HYMN Go now, Children, with our Blessing

*During the Sending Hymn, kindergarten through 5th grade children  
depart for their Sunday School classes.*



**FIRST LESSON** Jeremiah 23:1-5 (*p. 725 in pew Bible*) Richard Wohlschlaeger

**SECOND LESSON** 2 Samuel 11:1-15, 26-27 (*p. 284 in pew Bible*) Agnes W. Norfleet

**SERMON** David and Bathsheba Agnes W. Norfleet  
*Fourth in Summer Series on King David*

† **HYMN 223** O My Soul, Bless Your Redeemer STUTTGART

## RESPONSE TO THE WORD

† **AFFIRMATION OF FAITH** Rebecca Kirkpatrick

We confess that God remains a holy God.

If we, too, are to be the Lord's covenant people,  
we must be holy as the Lord is holy.

We must keep God's commandments,  
not in order to earn or compel the Lord's favor,  
but to reflect the character of God  
and to be God's grateful and loving people.

In history God has blessed and judged the covenant people.

The Lord's care sustained them along their way.

God gave them a land where they could celebrate God's goodness.

The Lord established their kingdom under David  
and promised a ruler from his line  
to rule in justice and peace.

We are certain God is still a God of goodness and justice. ~from *A Declaration of Faith*

**PRAYERS OF THE PEOPLE**

Rebecca Kirkpatrick



## THE LORD'S PRAYER

Our Father who art in heaven, hallowed be thy name, thy kingdom come, thy will be done, on earth as it is in heaven. Give us this day our daily bread. And forgive us our trespasses, as we forgive those who trespass against us. And lead us not into temptation, but deliver us from evil. For thine is the kingdom, and the power, and the glory, forever. Amen.

## OFFERING

*Please fill in the Fellowship Register at the end of your pew;  
pass it down your row and back again.*

## OFFERTORY ANTHEM Come, Thou Fount of Every Blessing arr. R. E. Martin Summer Choir

Come, Thou Fount of every blessing, tune my heart to sing Thy grace; Streams of mercy, never ceasing, call for songs of loudest praise. Teach me some melodious sonnet, sung by flaming tongues above. Praise the mount! Oh, fix me on it, mount of God's unchanging love. Here I find my greatest treasure; Hither by Thy great help I've come; and I hope, by Thy good pleasure, safely to arrive at home. Jesus sought me when a stranger, wandering from the fold of God; He, to rescue me from danger, interposed His precious blood; O to grace how great a debtor daily I'm constrained to be! Let Thy goodness, like a fetter, bind my wandering heart to Thee. Prone to wander, Lord, I feel it, prone to leave the God I love; Here's my heart, O take and seal it, seal it for Thy courts above.

## † DOXOLOGY (in unison) (Hymnal 592)

Praise God, from whom all blessings flow; praise God, all creatures here below;  
praise God above, ye heavenly host; praise Father, Son, and Holy Ghost. Amen.

## † PRAYER OF DEDICATION

## † HYMN 538 Lord, Dismiss Us with Thy Blessing SICILIAN MARINERS

## † BENEDICTION AND CHORAL RESPONSE Agnes W. Norfleet

## POSTLUDE Toccata on *How Firm a Foundation* Craig Phillips

### SANCTUARY FLOWERS

Given to the glory of God and in loving memory of John W. Bickhart

### CHAPEL GARDEN FLOWERS

Given to the glory of God and in loving memory of Debbie Craig

### PLAYING THE CARILLON

Dianne Heard

### WELCOME THE REV. REBECCA KIRKPATRICK

at Lemonade on the Lawn (weather permitting). Greeting and hosting today are  
Representatives of Associate Pastor Nominating Committee  
for Adult Education & Mission.



# **Announcements**

**STAFF NEWS.** Parish Nurse Ann Fossum, a long-time BMPC member, is retiring as of July 24. She and her husband are looking forward to enjoying their home in Florida. Sue Gibbons, also a long-time BMPC member, is retiring from her volunteer position as Shared Ministries Coordinator. She plans to enjoy more time with her grandchildren in Massachusetts. We are grateful to both of these faithful individuals for their years of service to BMPC as church members and as members of the staff team.

**DONATE SANCTUARY FLOWERS.** On Sunday, August 23, 2015, there is an opening for a donor of sanctuary flowers. Contact Ruth Miller Cox, 610-446-1595.

**SING WITH OUR SUMMER CHOIR.** All singers (ages 12 to adults) are invited for a short rehearsal on Sundays at 9:00 a.m. in the choir loft, then to stay and sing for the 10:00 a.m. service. Summer choir is simple (one anthem and hymns), and informal (no robes). Come when you can; no need to sign up in advance. StephanieSpeakman@bmpc.org, ext. 8836.

**YOUTH SUMMER TRIPS STILL OPEN.** AmyBauer@bmpc.org, ext. 8821

- **MIDDLE SCHOOL URBAN PLUNGE IN NYC.** July 26 – 31, for 6th to rising 8th graders. We're taking the Plunge to the city that never sleeps! We'll be hosted by a church in Manhattan and spend the days doing meaningful service with local organizations. At night, we'll enjoy the sights and sounds of NYC, including a Broadway show. Cost: \$449.
- **CAMP KIRKWOOD 2015.** August 9 – 15. For rising 6th to rising 12th graders. Kirkwood is not just a "week away" in the Poconos. It's a week full of fun, friends, and faith! There are opportunities for archery, arts and crafts, high ropes, and free time to hang out with friends. With worship and small groups, Camp Kirkwood is an unforgettable week. Cost: \$599.

**BOOK RECOMMENDATIONS.** Pick up the latest list of book recommendations at the Book Center in the Ministries Center and while you're there, choose a book for summer reading. Our Book Center is accessible on weekdays from 9:00 a.m. to 5:00 p.m. (the key is available at the Reception Desk). You also may borrow books from our Converse House Library. Kat MacMurray, KatRMac2@gmail.com.

**REQUEST PASTORAL CARE.** Our Care Team is available for home and hospital visits and prayer. You may submit prayer requests on the cards found in the pew racks or visit [www.bmpc.org/prayer](http://www.bmpc.org/prayer). LorieBenovic@bmpc.org, ext. 8833.

**HABITAT PHILADELPHIA'S NEWEST ReSTORE.** The ReStore, 2318 Washington Avenue, Philadelphia, is open to accept household items Wednesdays through Saturdays 9:00 a.m. to 5:00 p.m. CarolSchmidt@bmpc.org, ext. 8819 or [www.HabitatPhiladelphia.org](http://www.HabitatPhiladelphia.org).

## Upcoming

**BIBLE FOR BEGINNERS.** Thurs., July 16, 7:00 – 8:30 p.m., Gloucester Room. Led by the Rev. Dr. Agnes Norfleet. Reading assignment: Exodus, chapters 1-19. Anita Iyengar, aciyengar@gmail.com, 610-645-6044.

## Today

**SUMMER SUNDAY SCHOOL.** Care is available for infants through 3-year-olds in the nursery, Ed. Bldg. Rm. 102, at 10:00 a.m. with special activities and a story, while children age 4 – grade 3 worship together in Ed. Bldg. Rm. 202 at 10:15 a.m. (after the Childrens' Moment in the Sanctuary). Please pick up your children in the Ed. Bldg. at 11:00 a.m. before “Lemonade on the Lawn.” MaryRichards@bmpe.org, ext. 8811.

**SUNDAY MORNING DISCUSSION GROUP.** Sundays, 8:45 a.m., Conference Room. Discussion of *Falling Upward – A Spirituality for the Two Halves of Life* by Richard Rohr. CarolSchmidt@bmpe.org, ext. 8819.

**SUMMER TED TALKS RETURN NEXT WEEK.** 11:15 a.m., Witherspoon Parlor. No class today as we welcome the Rev. Rebecca Kirkpatrick and her family. On July 19: Dr. John Alston, Founder of Chester Charter School for the Arts.

**ASSIST WITH THE INTERFAITH HOSPITALITY NETWORK.** IHN guests will arrive today and stay until July 19. If you are able to assist by preparing and serving dinner or spending the night, contact Barbara Heaton, BarbaraHHeaton@gmail.com, 610-667-2197 or AmyBauer@bmpe.org, ext. 8821.

## Caring & Sharing

**HELP WITH SUMMER SUNDAY SCHOOL.** Choose a date to share a story with our 2 and 3-year-olds in the nursery or help us worship together at “Summer Chapel” for ages 4 - 10. MaryRichards@bmpe.org, ext. 8811.

**OPPORTUNITIES TO SERVE WITH THE PASTORAL CARE OFFICE.** Provide rides for older adults, meals to those recuperating, knit prayer shawls for those in need of prayer, visit the homebound. Contact: loriebenovic@bmpe.org or ext. 8833.

**FEED THE HUNGRY.** Your contributions to the white hunger envelopes in the pews provide food for emergency food cupboards, homeless shelters, and hunger relief organizations in our area.

**NEED A RIDE?** We can help you with some of your transportation needs. For rides to medical appointments call Lorie Benovic, ext 8833. Volunteer drivers welcome.

# **This Week's Calendar**

***For more information visit our website at [www.bmpc.org](http://www.bmpc.org), call the church office (610-525-2821), or contact [communications@bmpc.org](mailto:communications@bmpc.org).***

## **Today, July 12, 2015**

The Rev. Dr. Agnes W. Norfleet, preaching  
8:00 a.m. Worship with Communion, Chapel  
10:00 a.m. Worship, Sanctuary  
7:45 a.m. Childcare for infants - age 3, Ed. Bldg. Rm. 102 (through 11:00 a.m.)  
8:45 a.m. Sunday Morning Discussion Group, Conference Room  
10:00 a.m. Grades 4 - 12 in worship, Sanctuary  
10:15 a.m. Sunday School: "Summer Chapel" age 4 - grade 3, Ed. Bldg.  
11:00 a.m. Welcome for Rebecca Kirkpatrick at Lemonade on the Lawn (parents pick up children in Ed. Bldg.)  
2:00 p.m. Interfaith Hospitality Network, Crypt, Fullerton Room

## **Monday, July 13, 2015**

9:30 a.m. Dance Fit, Gymnasium  
5:00 p.m. Interfaith Hospitality Network, Crypt, Fullerton Room

## **Tuesday, July 14, 2015**

10:30 a.m. Tai Chi, Gymnasium  
12:45 p.m. Parkinson Disease Support Group, Witherspoon Parlor  
4:30 a.m. Upward Basketball Summer Nights, Gymnasium  
5:00 p.m. Interfaith Hospitality Network, Crypt, Fullerton Room

## **Wednesday, July 15, 2015**

8:00 a.m. Weekday Contemplative Prayer Group, Chapel  
2016 Stewardship Committee, Conference Room  
9:00 a.m. Walk for Life, meet in Main Parking Lot  
9:30 a.m. Dance Fit, Gymnasium  
5:00 p.m. Interfaith Hospitality Network, Crypt, Fullerton Room  
7:00 p.m. Middleton Center Marketing Committee, Gloucester Room

## **Thursday, July 16, 2015**

10:00 a.m. Artists' Gathering, Gloucester  
2:30 p.m. Main Line Adult Day Center Board, Conference Room  
5:00 p.m. Interfaith Hospitality Network, Crypt, Fullerton Room  
6:00 p.m. Boy Scouts Troop 19, Gymnasium  
7:00 p.m. Bible for Beginners, Gloucester

## **Friday, July 17, 2015**

9:30 a.m. Dance Fit, Gymnasium  
5:00 p.m. Interfaith Hospitality Network, Crypt, Fullerton Room

## **Saturday, July 18, 2015**

9:00 a.m. Presbyterian Records Review, Conference Room  
10:00 a.m. Baptism Workshop, Converse House Parlor  
5:00 p.m. Interfaith Hospitality Network, Crypt, Fullerton Room

## **Sunday, July 19, 2015: Baptism Sunday**

The Rev. Dr. Agnes W. Norfleet, preaching

# **Contact Information**

## **Bryn Mawr Presbyterian Church**

625 Montgomery Avenue, Bryn Mawr, PA 19010

(P) 610-525-2821 • (F) 610-525-9476

[www.bmpc.org](http://www.bmpc.org) (for program information, calendar, and staff directory)

[Facebook.com/BrynMawrPC](https://www.facebook.com/BrynMawrPC) • [Twitter.com/BrynMawrPres](https://twitter.com/BrynMawrPres)

24/7 Answering Service for Pastoral Emergencies: 610-525-2821