

# *Bryn Mawr Presbyterian Church*

Sunday, August 14, 2022 | 10:00 a.m., Sanctuary

Tenth Sunday after Pentecost



# WELCOME

## NEW HERE?

We are pleased that you are joining us as we worship God this morning. We invite you to introduce yourself to one of our pastors in the Atrium following the Worship Service. All of our programs, ministries, and opportunities for mission are open to everyone. Come join us!

## COVID-19 GUIDELINES

Masks are optional inside church buildings, although masks may be required in some areas of the Education Building. Please maintain physical distance inside, and be mindful that we are an intergenerational community and while COVID vaccines are available for children as young as six months (Pfizer), some children may not have been vaccinated.

## LIVESTREAMED CHURCH SERVICES

In addition to in-person worship, the Sunday Worship Services are available to watch live at 10:00 a.m. on our livestreaming page: [www.bmpc.org/livestream](http://www.bmpc.org/livestream). For your convenience, the service also will be posted on our Worship Services page on Monday.

## CHILDCARE AND SUNDAY SCHOOL

Childcare is available on Sundays from 8:00 a.m. to noon for children ages six months and older. See Sunday School class information on this page. Please contact Childcare Coordinator Rebecca Kellich at [childcare@bmpc.org](mailto:childcare@bmpc.org) with any questions.

## WEEKLY E-NEWSLETTER

Subscribe to our BMPC eNews by visiting our website: [www.bmpc.org](http://www.bmpc.org).

## Today's Schedule

### Childcare

#### (Birth-Kindergarten)

8:30 a.m., Ed. Bldg., Nursery

### 10:00 a.m. Worship, Sanctuary

#### Worship Together Sunday

Grades 4 - 12, Sanctuary

#### Summer Sunday School

10:15 a.m., following the  
Children's Moment  
Grades PreK to 3, Ed. Bldg.

### Atrium Café

11:00 a.m.

Lemonade & Fellowship  
Atrium

### Bryans – Tuten Art Exhibit

9:00 a.m. – noon  
Fine Arts Gallery,  
Ministries Center

# GATHERING OF GOD'S PEOPLE

PRELUDE

Entrada, Echo, and Elevazione

Kathleen Scheide

WELCOME

Rachel Pedersen

## † CALL TO WORSHIP

One: We are gathered in the presence of God, who asks us to choose between life and death, blessing and curse.

**All: We are gathered like the people of Israel who were challenged to choose the way of life.**

One: Like them, we often follow the ways of death.

**All: Yet, like them, we have the freedom each day to begin anew by the grace of God.**

One: By our presence here, we are saying that we want to choose life one more time.

**All: Let us praise the God of love and life who has called us to this place. Amen.**

## † HYMN 664

Morning Has Broken

BUNESSAN

## CALL TO CONFESSION

### AND PRAYER OF CONFESSION *(in unison)*

God of hope, we confess our disregard of your care; our doubt of your providence; our blindness to signs of your love.

We are afraid to risk our comforts to find new life; we separate ourselves from you and from others and foster divisions between those you love.

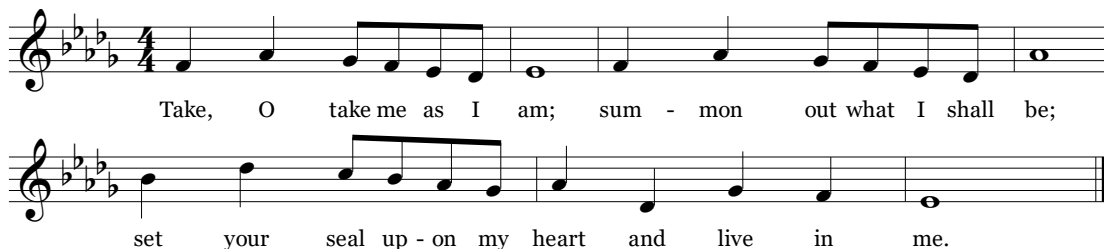
Help us amend our lives and make us your faithful people who bear the good fruit of your Word in the world.

*A moment of silence for personal reflection and confession.*

## ASSURANCE OF PARDON

### SUNG RESPONSE

Take, O Take Me As I Am



*During the Sung Response, children are invited to come forward for the Children's Moment and Baptism.*

† Please stand, if able.

# PROCLAMATION OF THE WORD

**CHILDREN'S MOMENT**

Rachel Pedersen

**THE SACRAMENT OF BAPTISM**

Brian K. Ballard

One: Do we, as members of the church of Jesus Christ, promise to guide and nurture these children by word and deed, with love and prayer, encouraging them to know and follow Christ and to be faithful members of His church?

**All: We do.**

**BAPTISM HYMN 188**

Jesus Loves Me!

JESUS LOVES ME

Jesus loves me! This I know, for the Bible tells me so. Little ones to him belong. They are weak, but he is strong. Yes, Jesus loves me! Yes, Jesus loves me! Yes, Jesus loves me! The Bible tells me so.

**PRAYER FOR ILLUMINATION**

Rachel Pedersen

**FIRST LESSON**

Psalm 82 (p. 542 in pew Bible)

**SECOND LESSON** Hebrews 11:29-12:2 (p. 226 in pew Bible)

Rebecca Kirkpatrick

One: The Word of the Lord.

**All: Thanks be to God.**

**SERMON**

*How Can I Keep from Singing*

Rebecca Kirkpatrick

†

**HYMN 821**

My Life Flows On

HOW CAN I KEEP FROM SINGING

## RESPONSE TO THE WORD

†

**AFFIRMATION OF FAITH** (*in unison*)

Brian K. Ballard

I believe in God the Father Almighty, Maker of heaven and earth, and in Jesus Christ his only Son our Lord; who was conceived by the Holy Ghost, born of the Virgin Mary, suffered under Pontius Pilate, was crucified, dead, and buried; he descended into hell; the third day he rose again from the dead; he ascended into heaven, and sitteth on the right hand of God the Father Almighty; from thence he shall come to judge the quick and the dead. I believe in the Holy Ghost; the holy catholic church; the communion of saints; the forgiveness of sins; the resurrection of the body; and the life everlasting. Amen.

~ *The Apostles' Creed*



# PASTORAL PRAYER AND THE LORD'S PRAYER

Our Father who art in heaven, hallowed be thy name, thy kingdom come, thy will be done, on earth as it is in heaven. Give us this day our daily bread. And forgive us our trespasses, as we forgive those who trespass against us. And lead us not into temptation, but deliver us from evil. For thine is the kingdom, and the power, and the glory, forever. Amen.

## INVITATION TO DISCIPLESHIP

**OFFERTORY ANTHEM**    Life Has Many Rhythms  
Summer Choir

Jody W. Lindh

Life has many rhythms, every heart its beat, everywhere we hear the sound of dancing feet. Life is this world's secret. Lord of Life, forgive, if we never asked you what it means to live. Life is meant for loving. Lord, if this is true, why do millions suffer without help from you? Some who fought injustice added wrong to wrong. Can it be that love is stronger than the strong? It was you who promised: "All who seek shall find." What we find lies deeper than our reach of mind. What we found was you, Lord, you, the God above. You had come, as a victim, to the world you love! Life is meant for loving. Lord, if this is true, love of life and neighbor spring from love of you. Give us your compassion, yours the name we bear, yours the only victory we would serve and share. Life is meant for loving.

*Please fill in the Friendship Pad at the end of your pew;  
pass it down your row and back again.*

† **DOXOLOGY 609** Praise God, from Whom All Blessings Flow LASST UNS ERFREUEN

Praise God, from whom all bless - ings flow. Praise God, all crea - tures high and  
low. Al - le - lu - ia, al - le - lu - ia! Praise God, in Je - sus ful - ly  
known: Cre - a - tor, Word, and Spir - it one. Al - le - lu - ia, al - le -  
lu - ia, al - le - lu - ia, al - le - lu - ia, al - le - lu - ia!

†	<b>PRAYER OF DEDICATION</b>		Brian K. Ballard
†	<b>HYMN 643</b>	Now Thank We All Our God	NUN DANKET ALLE GOTT
†	<b>BENEDICTION AND CHORAL RESPONSE</b>		Rebecca Kirkpatrick
	<b>POSTLUDE</b>	Toccata	Michelle Leclerc

## WORSHIP NOTES

### RECEIVING THE SACRAMENT OF BAPTISM

William Neil Sampson and Penelope Wrenn Sampson

Son and daughter of Julie and Kyle Sampson

---

### PLAYING THE CARILLON

Rob Mygatt

---

### BULLETIN COVER

Photo by Dave Tavani

---

### RESPONSE & DOXOLOGY

Text and Music: ©1995 WGRG, Iona Community (admin. GIA Publications, Inc.)

Reprinted and streamed with permission under ONE LICENSE #A-716211.

All rights reserved.

Text: ©1989 Hope Publishing Company. Music Harm: ©1998 Hope Publishing Company. Reprinted and streamed with permission under ONE LICENSE

#A-716211. All rights reserved.

# **Announcements**

**SANCTUARY FLOWER DONATIONS.** Openings are available for next Sunday, Aug. 21, and every Sunday in September for donors who wish to give flowers in memory of or in honor of loved ones. Later, our Deacons deliver small arrangements of the Sanctuary flowers to homebound church members. If you would like to donate flowers for a Sunday Worship Service, contact Natalie Hoepp at [bmpcfflowers@gmail.com](mailto:bmpcfflowers@gmail.com).

**CHURCH OFFICER NOMINATIONS.** Please submit your recommendations by Sept. 18 for Elders, Deacons, Trustees, and Nominating Committee Members-at-Large for 2022-2023 via the nominating form: <https://bit.ly/BMPCNominationForm>. Paper copies of the nominating form are available in the Narthex. Candidates must be church members for at least two years, faithfully participate in the worship and program life of the church, and regularly contribute to the church.

**SUMMER CHOIR.** Sundays through Sept. 4, 9:00 a.m., Choir Loft. Each summer, from mid-June through the beginning of September, all singers ages 12+ are invited to come to church any Sunday at 9:00 a.m. for a short rehearsal in the Choir Loft, then stay and sing for the 10:00 a.m. Worship Service. Summer choir is simple (one anthem, hymns, and a closing response), and informal (no robes). No long-term commitment; no need to sign up in advance.

## **Upcoming**

**BACK-TO-SCHOOL BLESSING.** Sun., Aug. 28, 11:00 a.m., Front lawn. Join us for a special blessing before the start of the school year. Bring your backpack or school bag to the front lawn for the blessing and fellowship. [MaryRichards@bmpc.org](mailto:MaryRichards@bmpc.org).

**BMPC SANCTUARY CHOIR AUDITION.** Sun., Sept. 4, 11:00 a.m., Choir Loft. The BMPC Sanctuary Choir is looking for new members to sing during the upcoming 2022-2023 season. If you are interested in auditioning, please come up to the choir loft after the worship service on Sept. 4. No reservations required for audition. For more information, contact the music department at [mfa@bmpc.org](mailto:mfa@bmpc.org).

**RALLY DAY.** Sun., Sept. 11, 11:00 a.m., Education Building Lawn. Join us for worship at 10:00 a.m. in the Sanctuary and afterward, enjoy food truck fare and fellowship on the lawn. All are welcome; bring a friend!



## **Caring and Sharing**

**PRAYER PARTNERS 2022-2023.** BMPC has a team of more than 70 people who ensure that each child and youth in our congregation is prayed for. If you would like to serve as one of our Prayer Partners or want more information about this ministry, email [RachelPedersen@bmpc.org](mailto:RachelPedersen@bmpc.org).

# Calendar

## Sunday, August 14

8:30	a.m.	Childcare (Birth-Kindergarten), Ed. Bldg., Nursery
9:00	a.m.	Summer Choir Rehearsal, Choir Loft
10:00	a.m.	<b>Worship with Baptisms &amp; Summer Choir,</b> <b>Sanctuary or Livestreamed Service on <a href="http://www.bmpc.org">www.bmpc.org</a></b> Grades 4-12 Worship Together with their Families, Sanctuary
10:15	a.m.	Summer Sunday School for Pre-K to Rising 3rd Grade, Ed. Bldg., Rm. 202
11:00	a.m.	Atrium Cafe, Atrium

## Monday, August 15

No events scheduled today.

## Tuesday, August 16

10:30	a.m	Tai Chi, Gymnasium and Virtual
-------	-----	--------------------------------

## Wednesday, August 17

10:00	a.m	Yoga206 Bone Boost, Gymnasium
-------	-----	-------------------------------

**Thursday, August 18**

No events scheduled today.

**Friday, August 19**

No events scheduled today.

**Saturday, August 20**

7:00	a.m.	Saturday Morning Men's Group, Converse House Parlor
10:00	a.m.	Searching for Still Waters Bereavement Group, Virtual

**Sunday, August 21**

10:00	a.m.	<b>Worship, Sanctuary or Livestreamed Service on <a href="http://www.bmpc.org">www.bmpc.org</a></b> The Rev. Rebecca Kirkpatrick will preach.
-------	------	--

## **Worship Staff**

**Agnes W. Norfleet**, Pastor

**Brian K. Ballard**, Associate Pastor for Pastoral Care & Senior Adults

**Leigh DeVries**, Associate Pastor for Youth & Their Families

**Rebecca Kirkpatrick**, Associate Pastor for Adult Education & Mission

**Rachel Pedersen**, Associate Pastor for Children & Family Ministry

**Franklyn C. Pottorff**, Associate Pastor for Congregational Life & Stewardship

**Jeffrey Brillhart**, Director of Music & Fine Arts

**Edward Landin Senn**, Assistant Director of Music

## **Contact Information**



Bryn Mawr Presbyterian Church  
625 Montgomery Avenue, Bryn Mawr, PA 19010

610-525-2821 • [www.bmpc.org](http://www.bmpc.org)

[www.facebook.com/BrynMawrPres](https://www.facebook.com/BrynMawrPres)

[www.instagram.com/BrynMawrPres](https://www.instagram.com/BrynMawrPres)

[www.twitter.com/BrynMawrPres](https://www.twitter.com/BrynMawrPres)

[www.youtube.com/user/brynmawrpres](https://www.youtube.com/user/brynmawrpres)

24/7 Answering Service for Pastoral Emergencies: 610-525-2821

The Middleton Center: 610-525-0766 • [info@middletoncenter.org](mailto:info@middletoncenter.org)

The Weekday School (Preschool): 610-525-2821, ext. 8840