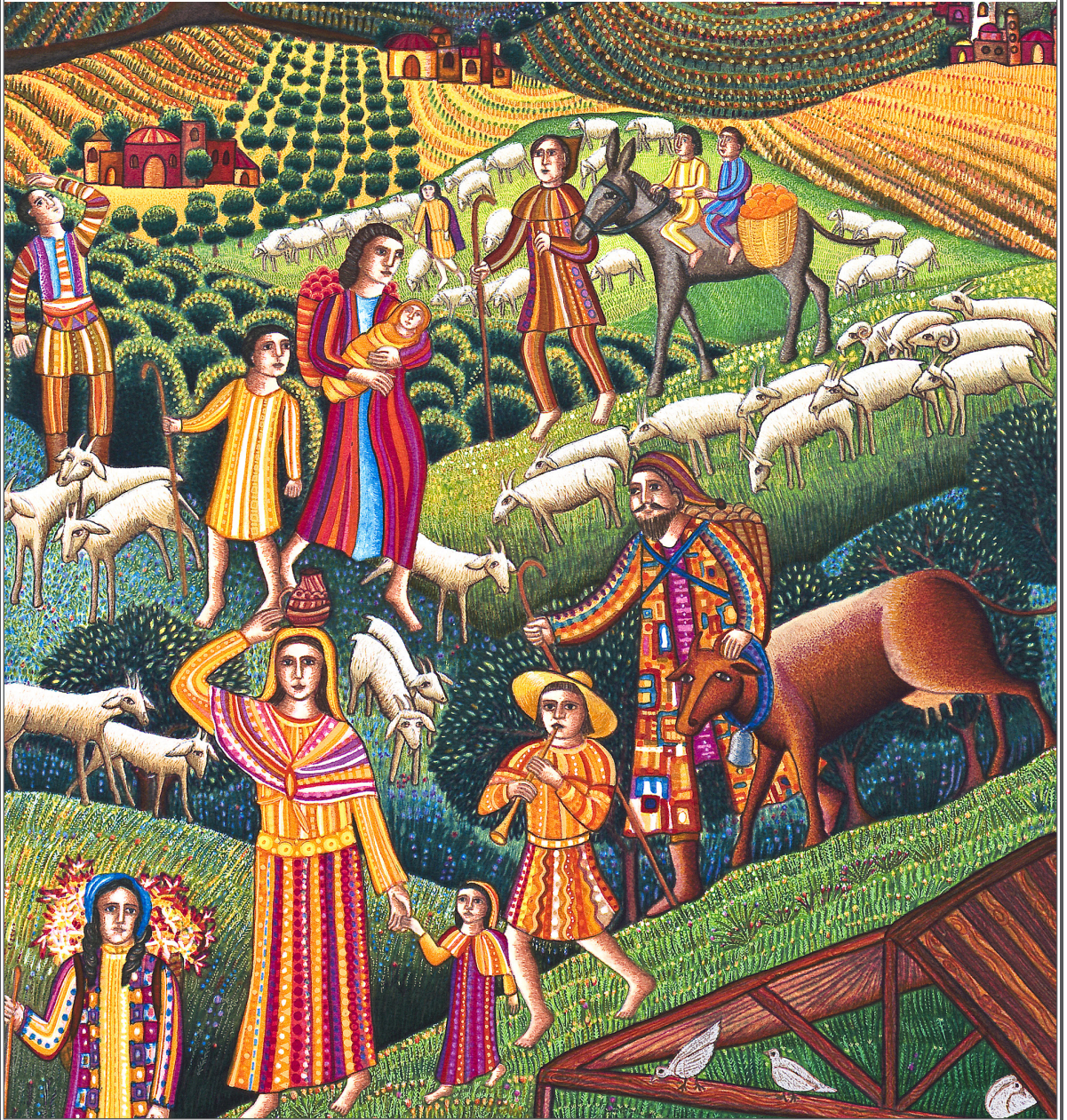


Bryn Mawr Presbyterian Church

Sunday, December 24, 2023 | 10:00 a.m., Sanctuary

Fourth Sunday of Advent



WELCOME

NEW HERE?

We are pleased that you are joining us as we worship God this morning. We invite you to introduce yourself to one of our pastors in the Atrium following the Worship Service. All of our programs, ministries and opportunities for mission are open to everyone. Come join us!

LIVESTREAMED CHURCH SERVICES

In addition to in-person worship, the Sunday Worship Services are available to watch live at 10:00 a.m. on our live-streaming page:

www.bmpc.org/livestream For your convenience, the service also will be posted on our Worship Services page on Monday.

CHILDCARE AND SUNDAY SCHOOL

Childcare is available on Sundays from 7:45 a.m. to 12:30 p.m. for children ages six months and older. See Sunday School class information on this page. Please contact Pastor Rachel, RachelPedersen@bmpc.org or Childcare Coordinator Erika Henry at childcare@bmpc.org with any questions.

WEEKLY E-NEWSLETTER

Subscribe to our BMPC eNews by visiting our website: www.bmpc.org

Today's Schedule

Childcare (Birth-Kindergarten)

8:45 a.m. – 11:30 p.m.

Ed. Bldg., Rm. 101

Worship with Sanctuary Choir

10:00 a.m., Sanctuary

Children and Youth in Worship

10:00 a.m., Sanctuary

Atrium Café

11:00 a.m., Atrium

Childcare (Birth-Kindergarten)

4:00 a.m., Ed. Bldg., Rm. 101

Christmas Eve Family Service

4:30 p.m., Sanctuary

Childcare (Birth-Kindergarten)

8:00 a.m., Ed. Bldg., Rm. 101

Christmas Eve Worship with Communion

8:30 p.m., Sanctuary

GATHERING OF GOD'S PEOPLE

PRELUDE

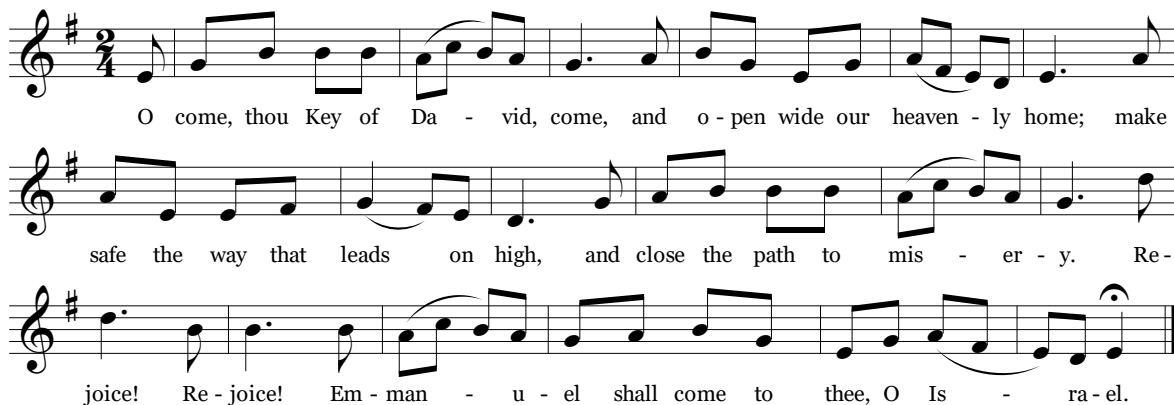
Suite sur le Magnificat Jean-Adam Guilain
Plein Jeu; Duo, Cromhorne en Taille; Petit Plein Jeu

WELCOME

Leigh DeVries

ADVENT INTROIT

VENI EMMANUEL



O come, thou Key of Da - vid, come, and o - pen wide our heaven - ly home; make
safe the way that leads on high, and close the path to mis - er - y. Re -
joice! Re - joice! Em - man - u - el shall come to thee, O Is - ra - el.

CALL TO WORSHIP & LIGHTING OF THE ADVENT WREATH

The Giampetroni Family

Leader: Whenever God brings good news and announces peace,

People: **Heaven and earth begin to sing.**

Leader: Before the eyes of all the nations to the ends of the earth,

People: **All people shall see the salvation of our God.**

Leader: Today Mary magnifies the Lord and rejoices in God,

People: **And sings of God's mercy, equity and justice.**

Leader: As Mary's trust fills us with love for your great gift to us, may this
small but abiding flame of love

People: **Give light to the world.**

Leader: Show us, O God, how to magnify you and rejoice at your coming,

People: **And make safe the way that leads on high!**

† HYMN 82

Come, Thou Long-Expected Jesus

HYFRYDOL

CALL TO CONFESSION AND PRAYER OF CONFESSION *(in unison)*

Holy God, Righteous Judge, have mercy upon us.
We have been proud in the thoughts of our hearts;
we have searched for our security in worldly powers.
We have allowed the rich to prosper
and the poor to be cast aside.
Have mercy on us, Lord!
Humble us to see that the strength we need is in you.
Kindle in us a love for all you love,
that we may join you in your work
of mercy, redemption, and joy.

A moment of silence for personal reflection and confession.

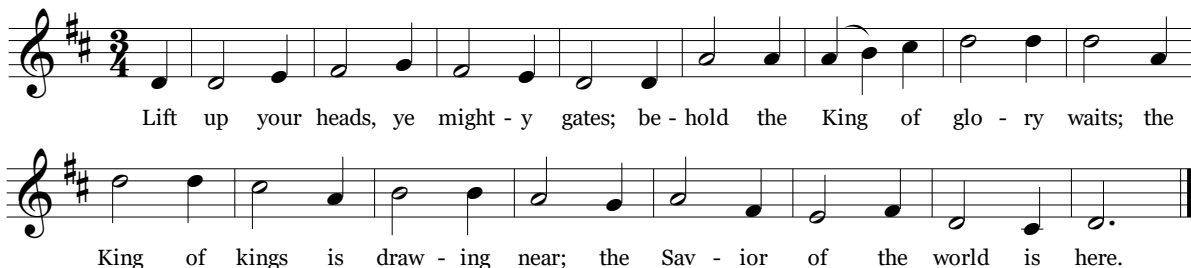
ASSURANCE OF PARDON

During the Sung Response, children are invited to come forward for the Children's Moment.

SUNG RESPONSE

Lift Up Your Heads

PUER NOBIS



Lift up your heads, ye might - y gates; be - hold the King of glo - ry waits; the
King of kings is draw - ing near; the Sav - ior of the world is here.

PROCLAMATION OF THE WORD

CHILDREN'S MOMENT

Rachel Pedersen

SENDING HYMN Go Now, Children, with Our Blessing



Go now, child-ren with our bless-ing, to love and serve the — Lord. May God
Bless you, May God guard you, May the light of God shine u - pon you, and may
God be gra-cious to you. May the pre-sence of God be with you. May the
pre - sence of God — be with you, and give you peace.

PRAYER FOR ILLUMINATION

Franklyn C. Pottorff

FIRST LESSON Isaiah 52:7-10 (*pg. 683 in pew Bible*)

ANTHEM

Sleeps Judea Fair

Hugh A. MacKinnon

Sleeps Judea fair, bides the Christ Child there: Shepherds, haste ye! Flocks forsaking, swift your way to Him be taking, Babe, of Israel's prayer. Christ from God is come choosing earthly home: royal pomp and splendor never, but with love which naught can sever, He will heal the dumb; Christ from God is come. Lowly bend the knee, thou from sin set free: let the Christ Child, meekly smiling, infantwise, all woe beguiling, grant His grace to thee!

SECOND LESSON Luke 1:39-56 (*pg. 57 in pew Bible*)

Agnes W. Norfleet

One: The Word of the Lord.

All: **Thanks be to God.**

SERMON

Magnify and Rejoice!

Agnes W. Norfleet

Fourth in series, Advent's Action Plan

† HYMN 100

My Soul Cries Out with a Joyful Shout STAR OF COUNTY DOWN

RESPONSE TO THE WORD

† AFFIRMATION OF FAITH

Rebecca Kirkpatrick

Jesus came as a child
born of a woman as is every child,
yet born of God's power as was no other child.
He lived as a Jew among Jews.
He announced to his people
the coming of God's rule of justice and peace on earth.
We believe that the coming of Jesus
was itself the coming of God's promised rule.
Through his life, death, and resurrection
he initiates the relationship between God and the human race
that God always intended.

~A Declaration of Faith

PASTORAL PRAYER AND THE LORD'S PRAYER

Our Father who art in heaven, hallowed be thy name, thy kingdom come,
thy will be done, on earth as it is in heaven. Give us this day our daily
bread. And forgive us our trespasses, as we forgive those who trespass
against us. And lead us not into temptation, but deliver us from evil. For
thine is the kingdom, and the power, and the glory, forever. Amen.

INVITATION TO DISCIPLESHIP

OFFERTORY ANTHEM

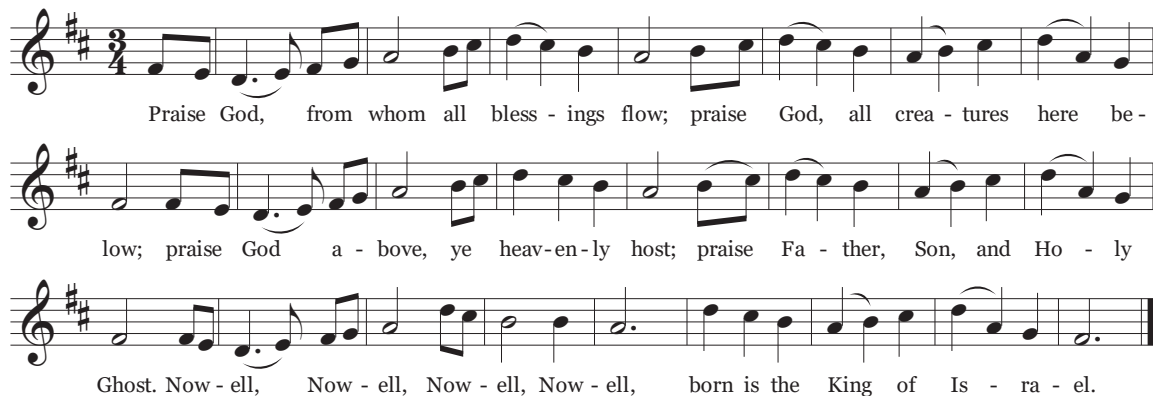
And the Glory of the Lord

G. F. Handel

And the glory of the Lord shall be revealed, and all flesh shall see it together;
For the mouth of the Lord hath spoken it.

*Please fill in the Friendship Pad at the end of your pew;
pass it down your row and back again.*

† **DOXOLOGY** Praise God from Whom All Blessings Flow **THE FIRST NOWELL**



† **PRAYER OF DEDICATION** Franklyn C. Pottorff

† **HYMN 134** Joy to the World **ANTIOCH**

† **BENEDICTION AND CHORAL RESPONSE** Agnes W. Norfleet

POSTLUDE Joy to the World Pamela Decker

†

“I am the resurrection and the life.”

Lorraine Eakle Leiphart ~ December 6, 2023

WORSHIP NOTES

PLAYING THE CARILLON

Rob Mygatt

BULLETIN COVER

John August Swanson | Nativity Detail

Christmas Eve Worship

CHRISTMAS EVE FAMILY SERVICE. 4:30 p.m., Sanctuary and livestreamed. Family Service with Nativity Tableau and musical leadership by BMPC's Children's Choir, Youth Chorale and the Bryn Mawr Festival Brass. Prelude begins at 4:15 p.m. Infant and toddler childcare available without reservations from 3:45-5:45 p.m. in the Education Building, Room 101.

CHRISTMAS EVE WORSHIP WITH COMMUNION. 8:30 p.m., Sanctuary and livestreamed. The Rev. Dr. Agnes W. Norfleet will preach. Assorted congregational and choir carols will be sung, including two World Premieres of works by Kim André Arnesen, commissioned in celebration of BMPC's 150 anniversary year as well as festive arrangements for two trumpets by Richard Webster. Prelude begins at 8:00 p.m.

Announcements

ADVENT STORY PATH LABYRINTH. Walking a labyrinth during Advent provides a meaningful way to journey to Bethlehem. The small labyrinth is open daily during Advent, Monday through Friday, 9:00 a.m. - 6:00 p.m. in the Chapel.

CODE BLUE SHELTER VOLUNTEERS NEEDED. For the month of January, BMPC will host a Code Blue Shelter to house up to 5 men sleeping outside in Lower Merion on the coldest nights. Volunteers will work in shifts from 8:30p.m. to 6:30 a.m. the nights the shelter is open. To receive the sign up link, a recording of last week's training/information session, or if you have questions, please contact RebeccaKirkpatrick@bmpc.org.

ADVENT GIFT MARKET. 11:00 a.m., Atrium. AGM representatives will be in the Atrium after worship today for your final opportunity to purchase charitable items or greeting cards. Online Shopping at www.brynmawragm.com will end at 12:00 p.m. today, December 24.

150TH ANNIVERSARY CHRISTMAS ORNAMENT. Join in celebrating BMPC's 150th Anniversary by purchasing this newly-created Christmas ornament featuring our renovated church property. Designed and crafted by Wendell August Forge, this ornament is a beautiful way to celebrate the past and the future of our congregation. Ornaments are on sale today in the Atrium for \$20 each.

Upcoming

YOUTH INTERNATIONAL MISSION TRIP APPLICATION DEADLINE.

Fri, Jan. 5, 5:00 p.m. Rising 9-12th graders (current 8-12th graders) are welcome to apply for a spot on the international mission trip to Peru, July 10-20, 2024. Applicants will be notified by February 1st at 5:00 p.m. if they have been accepted.

The application can be found on Realm, the youth ENews, or by emailing Pastor Leigh Devries at ldevries@bmpc.org

CASSEROLE BLITZ. Sat., Jan. 20, 8:30 a.m., Ministries Center Kitchen. Join us to make casseroles and friends at the Hunger Committee's Casserole Blitz! Enjoy this family activity (children over age 5) as you get to know BMPC folks you haven't met before and support a good cause while working with others to prepare casseroles for area shelters. Upcoming Dates: Feb. 19, Mar. 18. Please use our RSVP link to sign up:

<https://bit.ly/Blitz-RSVP>

JAMES KEALEY ORGAN RECITAL. Sun., Jan. 21, 2:00 p.m., Sanctuary. Mr. Kealey is the Laureate of the 2022 American Guild of Organists' "National Young Artist Competition in Organ Performance." His program will feature Maurice Duruflé's tone poem, "Prélude, Adagio, et Choral varié" on the Pentecost chant theme of Veni Creator, and David' Hurd's "On the name of MAURICE DURUFLÉ." Fifty percent of the free-will offering taken will benefit the AGO Philadelphia Scholarship Fund.

DEACONS' ANNUAL BLOOD DRIVE. Mon., Jan. 22, 1:00-6:00 p.m., Congregational Hall. Volunteers needed to donate blood; register online:

<https://bit.ly/2024-Blood-Drive> Contact Monica Devane at 610-520-8823 or MDevane@bmpc.org.

Calendar

Sunday, December 24

8:30	a.m.	Sunday Morning Discussion Group, Cannon Room
8:45	a.m.	Childcare (Birth-Kindergarten), Ed. Bldg., Rm. 101
10:00	a.m.	Worship with Sanctuary Choir, Sanctuary and Livestreamed Service on www.bmpc.org
11:00	a.m.	Atrium Cafe, Atrium
4:00	p.m.	Childcare (Birth-Kindergarten), Ed. Bldg., Rm. 101
4:30	p.m.	Christmas Eve Family Worship Service with Nativity, Sanctuary
8:00	p.m.	Childcare (Birth-Kindergarten), Ed. Bldg., Rm. 101
8:30	p.m.	Christmas Eve Worship Service with Communion, Sanctuary

Monday, December 25

Campus Closed.

Tuesday, December 26 - Friday, December 29

No Events Scheduled.

Saturday, December 30

7:00	a.m.	Saturday Morning Men's Group, Converse House Parlor
------	------	---

Sunday, December 31

10:00	a.m.	Sunday Worship with Sanctuary Choir Sanctuary and Livestreamed Service on www.bmpc.org The Rev. Dr. Franklyn C. Pottorff will preach.
-------	------	--

Worship Staff

Agnes W. Norfleet, Pastor

Leigh DeVries, Associate Pastor for Youth & Their Families

Rebecca Kirkpatrick, Associate Pastor for Adult Education & Mission

Kirby Lawrence Hill, Interim Associate Pastor for Pastoral Care & Senior Adults

Rachel Pedersen, Associate Pastor for Children & Family Ministry

Franklyn C. Pottorff, Associate Pastor for Congregational Life & Stewardship

Jeffrey Brillhart, Director of Music & Fine Arts

Edward Landin Senn, Assistant Director of Music



Contact Information

Bryn Mawr Presbyterian Church
625 Montgomery Avenue, Bryn Mawr, PA 19010

610-525-2821 • www.bmpc.org

www.facebook.com/BrynMawrPres

www.instagram.com/BrynMawrPres

www.twitter.com/BrynMawrPres

www.youtube.com/user/brynmawrpres

24/7 Answering Service for Pastoral Emergencies:
610-525-2821

The Middleton Center: 610-525-0766 •
info@middletoncenter.org

The Weekday School (Preschool): 610-525-2821, ext. 8840