

Volume 114, Issue 11

September/October 2011

MESSENGER

Bryn Mawr Presbyterian Church

Kick-off of our program year at the
BMPC Block Party
SEPTEMBER 25, 11:00 A.M. – 1:00 P.M.
(FREE WILL OFFERING)



- Premiere of *BMPC: Reflections of Time* and
- *Children & Youth Movie: Life and Hope for the Church* (pg 2)
- 100th Anniversary Tours of Converse House (pg 2)
- Information about our ministries and upcoming programs
- Food by Pig Daddy's
- Music
- Face painting
- Balloon artist
- Games and more!



Featuring
folksinger John
Flynn, an award-
winning recording
artist.

Back-to-school Service Opportunity: Bring school supplies for tutoring program & needy school students in our area.



Exploring The Story

The image above, St. John the Divine, is taken from our Chapel's Tiffany window. A Galilean fisherman, John (along with his brother James) was chosen by Jesus as one of the Twelve and was a treasured disciple.

Commissioned in 1907 in memory of Dr. William Hamilton Miller, BMPC's first pastor, this window was originally a memorial in the old church built in 1886. The foundation and three walls of that church were incorporated in the framework of our present Chapel which was dedicated in 1941.

engagement in their lives. As we have been molded in the past by these stories, so we expect to be reformed and renewed by similar reflections in the year ahead. Ours is "no idle tale;" it is God's truth and God's story of the salvation of the world. That includes every one of us.

Exploring the Story

by the Rev. Dr. James Carter

Each year at the church, one of our councils selects a theme for us to keep in mind as we develop worship, activities and programs. This theme has influence on much that we say and do during the year and helps us focus our efforts around a common idea. This year we will be emphasizing "Exploring the Story." As you can imagine, this is an emphasis with many possibilities. For example, there is the biblical story that is ours to share, the Gospel of God's judgment, love and redemption of us all. There is our church's story of ministry in the past, present and future in this place, Bryn Mawr. And there is the personal story of growth and change and discovery that each of us can tell.

I encourage you to let this theme guide your own journey of faith over the next twelve months. You will need imagination, discipline, a forgiving spirit, humor and much love to make your effort work to your benefit and to the benefit of the whole church. You will want to review the mighty acts of God in the stories of the people of God. You will want to recall some of these acts as you visit with friends and teachers. You will find yourself acknowledging how, providentially, God has been a part of your life at critical times. And you will discover that the stories never grow old but continue to disclose new dimensions of God's activity among us.

So, have fun with this theme this year and let it help you appreciate again how grateful we are for those who have shared stories of God's

The Pastor Nominating Committee



The Pastoral Nominating Committee is hard at work searching for our next head pastor. Check the PNC webpage, www.bmpc.org/PNC2.htm for updated information and to learn about the process.

The PNC thanks all the congregants who suggested a candidate or network contact.

Join us at our Block Party for these exciting moments!

Bryn Mawr Presbyterian Church: Reflections of Time *by Lawana Scales*

I am a relatively new member of Bryn Mawr Presbyterian Church and of the Fine Arts Council. When the discussion about the church theme “Exploring The Story” was introduced at a Fine Arts Council meeting, a documentary immediately came to mind. The “Bryn Mawr Presbyterian Church: Reflections of Time” documentary began production several months ago with interviews with more than 40 members of the church. The stories were compelling, historical and inspirational. Many talked about the various outreach programs developed and implemented by BMPC, and how they have affected the lives of the less fortunate both locally and around the world. Other members spoke of the beauty of the Sanctuary and sounds of the organ and choir. The opportunity the videographer John and I had, however, to explore all of the other elements beyond the Sunday morning service revealed so much more: the majesty of this church campus, the programs BMPC offers to both congregants and the community and years of memories relived by many of the members. The documentary will premiere on September 25 and will enable existing and future members to feel the heartbeat that brings life to BMPC and conveys its legacy for years to come.



BMPC member Lawana Scales donated her time and expertise to create this documentary. She was the former Director of Programming at NBC 10, and currently CEO of ScalesSignature Productions and Entertainment Inc. The project was funded by Jeffrey Brillhart's Silver Anniversary Fund.



Building of our Sanctuary circa 1927.

Children & Youth Video: Life and Hope for the Church

By The Rev. Joanne Fong

The future of a vital Christian community in a growing secular world depends on our openness to support children and youth initiatives. Without Christian education (Sunday school), youth retreats, and outreach to at-risk children, rising teens, and young adults, many will be left on their own to make the



most important decisions in areas of love, relationships, career-advancement, and their ethical character without the influence of a community of faith. Recognizing BMPC's commitment to nurture our children's Christian faith, I've been working on a project to capture on film and photography their smiles, their questions, and their personal stories. I hope to give voice to them, both within our church and in the wider community outreach partnerships.

100th Anniversary of Converse House

By Kat McMurray

When BMPC's first pastor, Dr. William H. Miller, died in 1907, the circa 1883 manse was deemed unsuitable for the incoming pastor. Renovation v. demolition of the small stone and wood-frame building was hotly debated by the Board of Trustees, but the matter was settled in 1910 when long-time member and Board president John H. Converse died. His children



offered to underwrite a new manse in his memory but with two firm conditions: a memorial plaque had to be permanently affixed to the building and expenditures could not top \$25,000. An architect was found, a contractor hired, plans were tweaked to stay under budget, and in 1911 the John H. Converse Memorial Manse became the new home of Dr. and Mrs. Andrew Mutch from Scotland and their four children. Known today as Converse House, it housed pastors and their families until 1958, and then church offices until 1991 when the Ministries Center was built. Today it houses offices and meeting rooms, along with Converse Library and the Middleton Center.

Fine Arts

The Fine Arts program continues to grow and change with the addition of two new staff members. Please join us in welcoming Ketti Jane Muschler, Director of the BMPC Choir School, and Keenan Boswell, Organ Scholar.

Ketti Jane Muschler was born and raised in Connecticut and was nurtured by a church that had a Royal School of Church Music (RSCM) program for children and youth. This past May she graduated from

Westminster Choir College, Princeton with top honors. At BMPC she will be directing the Youth Chorale, Saint Cecilia Girl Choir and Carol Choir. As director she will take the lead in shaping the future of music for children and youth at BMPC.



Keenan Boswell always has been a lover of music. An active member of his community's children's chorus and high school wind ensemble, and most recently a graduate of The Juilliard School, class of 2010, Keenan demonstrates his love for music through creation, performance and production. As a very young performer (age 10), he toured throughout England and France and gave mini recitals on the organs of Canterbury Cathedral, U.K. and Le Madeleine, France through the Contra

Costa Children's Chorus. Since, he has built up his reputation as a flamboyant, exciting organ concert artist, performing at the American Guild of Organists' Regional (AZ 2008 Region IX RCYO Winner)

and National Convention (MN 2008 Rising Stars) as well as in various others venues across the United States including The Crystal Cathedral and Grace Cathedral.



Introducing Jacqui Van Vliet

We welcome **Jacquelynn ("Jacqui") Van Vliet**, who joined our staff in August, to assume pastoral leadership for congregational life. Jacqui's focus will be family ministries and enrichment for children through our Sunday and Weekday Schools. She will also direct programs to enhance congregational life.

Jacqui brings a strong educational background and rich practical experience. A 2008 Master of Divinity graduate from Union

Theological Seminary, she will be ordained by the Presbytery of Philadelphia this fall. In addition to her MDiv, she also holds an MA in rehabilitation counseling from New York University and a BA from Houghton College. Jacqui recently served as Interim Director of Educational Ministries at the Rutgers



Presbyterian Church in New York City, following 10 years as the Director of Lay Ministries & Children's Ministries at the West Side Presbyterian Church (1500 members) in Ridgewood, NJ. Ordained as an elder and deacon, she has taught Sunday school, served on the Christian Educators Committee of the Presbytery of the Palisades, coordinated a summer urban youth tutoring program, and preached as pulpit supply.

In discussions with Session and the Personnel Committee prior to her arrival, Jacqui expressed an interest in joining an open, diverse, inquisitive church committed to welcoming all, growing as individuals and a community of faith, and discovering God's call by sharing a creative life of ministry in worship and participation as partners of God's ongoing work in the world. She is particularly excited about the opportunity to engage the children in worship. Those who have already had a chance to work with Jacqui will have experienced the person revealed through her references – a warm, reflective and listening presence, with a collaborative and collegial leadership style that encourages and affirms the gifts of others.

We look forward to our journey of faith and action together with Jacqui.

Introducing Kellen Smith, Our New Associate Pastor

The post card said “we’ve moved” and the faces of Kellen Smith, our new Associate Pastor for Youth, Their Families and College Ministries, and Sarah, his wife, smiled out at us. We are excited as a congregation to welcome them. Wasting no time, Kellen began his official duties with us on July 1, leaving the following day for the Senior High Youth Mission Trip to West Virginia to work with youth and adult volunteers. Through the Appalachian Service Project (ASP), they helped families in rural West Virginia rebuild and rehab their homes... roofs, porches and underpinning (what’s an underpinning?!)



Kellen said, “It was a privilege and joy to begin my ministry at BMPC with the high school mission trip. The youth and adult leaders on the trip worked with enthusiasm and faith as we served together in West Virginia. With ASP, we not only helped to build homes that were warmer, safer, and drier, but we also built meaningful relationships with the families we served. I look forward to future opportunities to serve God with the youth and adults of this congregation.”

To bring into perspective the success of the trip and the future of youth ministry at BMPC, one youth was overheard saying to a member of the APNC, “After two years of looking for a youth pastor, it was worth the wait!”

High School Mission Trip Snapshots



Kellen hard at work on the High School Mission Trip



Kellen’s Installation

Sun., Sept. 18, 4 p.m.

Youth Kick-off Meeting

Sun., Sept. 11, 11 a.m.,
Congregational Hall

Youth and their families are invited to meet Kellen and learn about events in the coming year. Be on the lookout for other youth events on the website and E-News in the coming weeks!

The Rev. Sherri Hausser celebrates 10 years at BMPC

A little more than 10 years ago in August 2001, the Rev. Sherri A. Hausser arrived at BMPC to take up pastoral responsibilities for Singles, Young Adults and Adult Education. With changes in the church community, Sherri has assumed new and different responsibilities.

We celebrate her journey and look forward to her exploration of new paths in her current areas of responsibility in Adult Education, Outreach and Worldwide Ministries. We mark this important anniversary for Sherri and BMPC with pleasure and congratulations for her efforts to date and those to come.



Welcome to our New Members Received in May



Andy and Brooke Bees
Narberth



Brian and Jody Boughton
Bryn Mawr



J. Corbit Davis III
Lafayette Hill



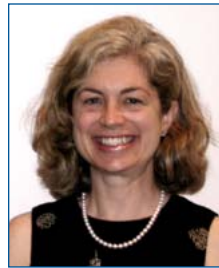
Chris and Lea May
Rosemont



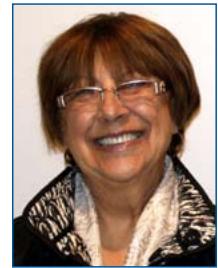
Peter and Janet McGuigan
Bryn Mawr



Will Umphres
Bryn Mawr



Alice Potter
Bryn Mawr



Not a BMPC Member? We invite you to join our community of faith this fall!

Orientation in the Ministries Center: **Sunday, October 23**, 8:30 a.m. -1:00 p.m. (includes lunch, childcare available).
Session Breakfast Meeting to receive new members in Congregational Hall: **Sunday, October 30**, 9:00 a.m. For more information or to register, contact DonnaBarrickman@bmpc.org, or 610-525-2821 x8809.

Moving Forward...with Self-Study Initiatives

by Bob Guthrie

Session has approved three areas of congregational focus for action over the next 12-18 months. These are based on recommendations from the self-study project completed last winter.

- **Spiritual foundations...** the focus of this initiative is to grow our discipleship and build our faith through education and study, fellowship, and worship experiences that bring each of us into closer relationship with God.
- **Member engagement...** led by Membership Council, this initiative will foster participation by the congregation in the life of the church -- its worship, fellowship, and service experiences. New, nearly new, and long-time members will be encouraged to broaden and deepen their involvement in BMPC.
- **Organizational growth and development...** this initiative embraces a myriad of projects that will improve church organization by building on its past strengths and/or providing corrective action where needed. Specifics include strategic planning for staffing and church properties, fine-tuning programs and ministries to match resources and mission, strengthening governance training for church leaders, improving church-wide communications, etc.

Curious for more details or information?

Contact: Donna Barrickman: DonnaBarrickman@bmpc.org, or 610-525-2821 x8809; Anita Iyengar (Spiritual Foundation), aniye@comcast.net; or Bob Guthrie, reguthrie@comcast.net.



Campus Improvements – HVAC Project connects old spaces in new ways

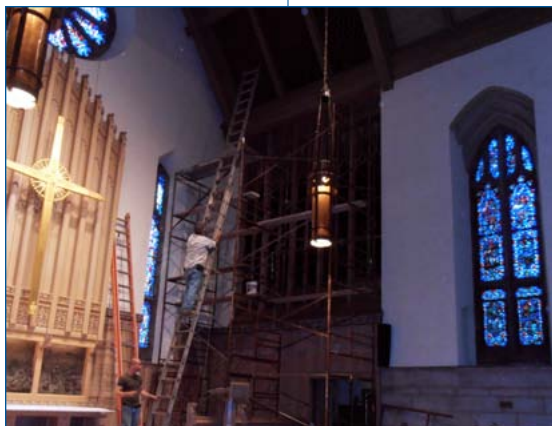
By Meg Holdsworth

During the months of July and August, the Chapel and Education Building have been the scene of intense activity as the HVAC project gets fully underway. Every floor of the Education Building shows signs of renovation as piping, ducts, and electrical connections to the centralized cooling and heating systems are installed.

In the Chapel, careful protection of the stained glass windows and components of the Chapel organ has preceded demolition and removal of the antiquated boiler equipment from the basement in preparation for new equipment. While all this goes on, the worship space created in Congregation Hall for the 8:00 a.m. service echoes in a surprising and moving way the cool, quiet peace of the Chapel.

As the weeks progress, the action spreads to the Fine Arts Center under the Sanctuary and Activities Building as these spaces are prepared for mechanical connections that will provide us with new options for how best to use the resources of our campus.

To find updates on the project and building closures, go to www.bmpc.org/hvac



Protecting the Chapel organ to prepare for construction.

The Capital Campaign “Forward in Faith: From Our House to the World Beyond Our Walls”

Your house and your kingdom shall endure before Me forever.

~ 2 Samuel 7:16

At our Annual Meeting in May, the congregation approved a comprehensive fund raising campaign for BMPC with a goal of \$15 million. Since that time the “Forward in Faith” steering committee has laid the groundwork for the campaign. As plans begin to come alive, the steering committee is eager to keep church members fully informed and encourage them to prayerfully consider how to become involved.

What is included in the \$15 million campaign goal? The campaign goal reflects costs associated with a number of critically necessary capital projects identified by the Property Committee. Modernization of our heating and air conditioning systems to make them more energy efficient and environmentally friendly, already is under way. In addition, our iconic church tower and Sanctuary exterior require

significant rehabilitation, and our magnificent stained glass windows and other building envelope items are in need of restoration. Further, as we consider what we are doing on our own property, we are compelled to think of others elsewhere. The goal also includes endowment of a fund to help create long-term financial stability for vital mission activities at home and abroad.

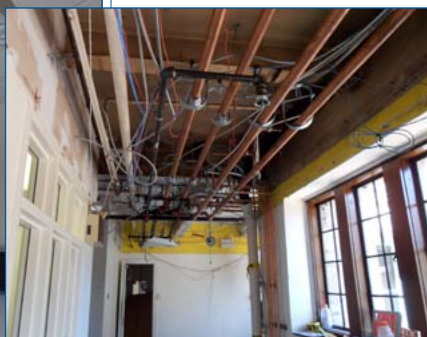
Why a campaign now? Bryn Mawr Presbyterian was left a sacred gift by the founders of our church who built our beloved Sanctuary and campus buildings and thus enabled a legacy of service to others. We have an obligation to maintain and preserve this gift so that our traditions of caring for others and renewal through worship can be carried on and sustained by BMPC congregations of the future.

This campaign to raise \$15 million is timely, urgent and necessary in order to fulfill our role as stewards of what God has given us. We are in a position to realize the dreams and prayers of those who came before us and those who will follow – dreams for a healthy, vibrant church that continues to express God’s love near and far. We seek your partnership as we move forward in faith.

Watch for further information about the Forward in Faith campaign online at www.bmpc.org/forwardinfaith.htm



The Fine Arts Center



The Education Building

The Middleton Center presents Parenting on the Main Line: Honest Talk on Real Topics

Parenting is one of the most significant challenges we undertake and all parents struggle from time to time and often struggle in isolation. How much better it would be to learn and share with other parents, along with input from highly trained experts? This is an invitation to focus on purposeful and positive parenting.

Parenting On The Main Line, a series of workshops designed by a group of youth specialists in our community and cosponsored by Main Line Reform Temple (MLRT) and BMPC's Middleton Center. Preceded by two successful screenings in April of the documentary Race To Nowhere, the series will begin with an evening featuring by Ken Ginsburg. Featured in Race to Nowhere, Dr. Ginsburg will discuss stresses on teenagers and will be speaking for the first time on his new book, *Letting Go with Love and Confidence: Raising Responsible, Resilient, Self-Sufficient Teens in the 21st Century*.



From October through May, Parenting On The Main Line will continue with monthly meetings with a goal for parents to learn together how best to navigate the challenges of raising young children and teenagers. Each session will focus on a specific topic, including bullying, learning, acting out, and fostering independence. Join other concerned parents to discuss what it takes to raise healthy, well-adjusted, ethically-grounded teenagers on the Main Line.

Opening Seminar: Sunday, September 25, 6:00 – 8:00 p.m., Sanctuary
Classes alternating Tuesdays and Thursdays, 7:00-8:30 p.m., for dates, topics, and locations, look online, www.parentingonthemainline.com, www.middletoncenter.org, or in worship bulletins

Y-Group provides support for women with children of elementary age or younger, focusing on family and faith. In addition to its monthly meetings, Y Group organizes a monthly book club, various mission projects, social outings, family activities and a strong support network for moms at BMPC and the community. It provides an opportunity to explore one's faith with other women in a nurturing and supportive environment.

Y-Group is planning a program year full of enriching and enjoyable meetings and events beginning with the annual **Kick-Off Brunch on September 13th at 9:15 a.m.** October heralds the start of the monthly Tuesday meetings with a round table discussion: "What does It Mean to Be a Mother in Today's World?" Contact Jen Huth: jenniferhuth@verizon.net.



Another Successful Vacation Bible Camp for which we say "Thank You"

Thanks to all 103 campers and 57 teen and adult leaders and to everyone who contributed in any way to this fabulous, fun- and spirit-filled week as we journeyed to "Hometown Nazareth" and explored what life was like when Jesus was a kid! At Hometown Nazareth everyone involved saw God's Word come to life like never before...touching lives, changing hearts, and drawing children and adults closer to Christ!



Caregiver Support Group

“Unless you’ve walked in my shoes, you cannot know...” *by Lorie Benovic*

Are you familiar with this popular cliché? When it comes to caregiving, there are no truer words. Caregiving for elderly relatives is an act of love that requires patience and understanding. Many of our members have found support at our monthly caregivers’ group. Facilitated by Dr. David Reed and our care manager Lorie Benovic, the group meets once a month from 7:00-8:00 p.m. in the Converse House Parlor Porch. Here caregivers can share stories, triumphs, challenges and helpful resources that assist them on their journeys.



Join us on the following Wednesday evenings: September 21, October 19, November 16 and December 14. For further information, call or email Lorie Benovic: loriebenovic@bmpc.org or 610-520-8833.

Save the Date: Flu Shot Clinic

Sunday, 11/27, 9:00 a.m. to 12:30 p.m.

Congregational Hall

RSVP required

Come Walk With Us *by Marie-Claire Higgins*

Did you know walking is a gentle, easily-accessible, low-impact exercise that can ease you into a higher level of fitness and health? Did you also know that Bryn Mawr Presbyterian Church has a walking group that meets in the large parking lot every Wednesday morning at 9:00 a.m.?

Enjoying a routine of brisk walking can reduce your risk of heart attack by the same amount as a more vigorous exercise such as jogging. Properly prepare with the right gear: comfortable footwear with proper support, loose-fitting clothes to layer if needed, and white or bright colored clothing and/or reflective tape after dark. Use proper technique: warm up your muscles, stretch, and cool down after each walking session by walking slowly for about five minutes and repeat your stretches. This decreases cardiac and general muscle stress.

So put on your sneakers and join us on Wednesdays at 9:00 a.m. Questions? Contact: Marie-Claire Higgins, 610-525-8832.

Presbyterian Women at Gompers School *by Helen Dennis*

PW is an enthusiastic supporter of the Open Books Open Minds child literacy initiative at the Gompers Elementary Public School Library. This program is an urban ministry organization initiated at BMPC and sponsored by The West Philadelphia Alliance For Children (WePAC). Young children in our West Philadelphia public schools need our help to read and to succeed. Volunteer in a library, assist in a classroom, or help build an after-school literacy program. The rewards are great... the gift of a hug and smile from a little child...just ask our PW participants.

For questions and to volunteer: Helen Dennis, hbdennis@verizon.net, or Sue Gibbons, suegibbons@bmpc.org



Janet Brown, a teacher, captures attention of eager readers.



Janet White reads *The Kissing Hand*, a book she read to her own children.



Ruthie Grant, a pre-school teacher, engages first grade children.

Come Explore the Story

Our lives are a tapestry of stories: stories of family, stories of faith, stories of the future. Stories give color, texture and meaning to our lives and help us understand ourselves and our world. It is through exploring our stories and how they intersect with God's story that we discover the meaning of our lives and come to understand our very purpose and calling. So join us in a class or small group as we engage this year's theme and, together, "Explore The Story."

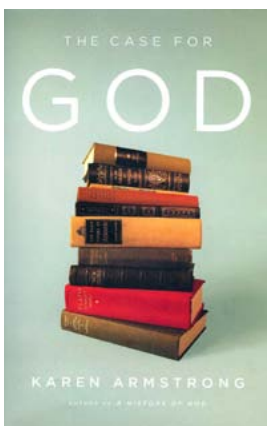
SUNDAYS AT 8:30 A.M.

THE CASE FOR GOD

by Karen Armstrong

Sundays, September 18 to November 20, in the Conference Room.

The Rev. Dr. Paul MacMurray leads this discussion of Part II – 1500 CE to the present. Join us as we explore the history of religious practices in many different cultures and the part that religion plays in human life, drawing on the insights of the past in order to build a faith that speaks to the needs of our dangerously polarized age.



SUNDAYS AT 9:00 A.M.

SPIRITUAL AUTOBIOGRAPHIES

Sundays, September 18 to October 23, in Converse House Parlor.

The Rev. Sherri Hausser leads this exploration of our spiritual journeys. We will discuss excerpts from spiritual writings of the past while writing and sharing our own spiritual autobiographies. Join us as together we discover how God's story is woven into our own.

WHEN THE WALLS COME TUMBLING DOWN by Muriel Ricker

Sundays, October 9 – 23, in the Middleton Center, Room 201.

Has your life been touched in anyway by divorce? Are you wondering how to minimize the negative effects of divorce on your children or grandchildren? If so, join author and therapist Muriel Ricker who will lead this three week class cosponsored by Family Ministries Council, Youth Ministries Council and The Middleton Center.

Watch the Adult Ed Brochure, Worship Bulletin and E-news for small group and in-home study and discussion opportunities.

SUNDAYS AT 11:15 A.M.

COMPANIONS ON THE WAY: AN INTRODUCTION TO SPIRITUAL DIRECTION

Sunday, September 18, in the Conference Room.

The Rev. Ellie Stratton and Ruth Workman of the Middleton Center lead you through the spiritual direction process, an ancient Christian discipline offering companionship on the journey of faith, deepening your prayer life, providing you with the language to express your experience with God, and helping you explore such questions as, "How is God working in my life?"

WHAT'S NEW ABOUT THE OLD BIBLE STORIES

Sundays, October 2 – 30, in the Conference Room.

Dr. Erik Heen, professor of New Testament Studies at the Lutheran Theological Seminary of Philadelphia, will lead our discussions of Gospel stories we learned as children and what new lessons they have for us today.

WEEKDAY CLASS

PREACHERS BROWN BAG BIBLE STUDY

Begins on Tuesday, September 13, noon, in the Conference Room.

Bring your lunch and meet with the preaching pastor for the upcoming Sunday (usually Dr. James Carter) to discuss the Bible text for the sermon.



PW COFFEE CUP BIBLE STUDY

Begins Wednesday, September 21, 10:00 a.m., in the Converse House Meeting room.

Dive deeply into one book of the Bible, learning about God and about one another with The Rev. Louisa Watkins Umphres.

Moving Forward Against Hunger

by Dave Hastings



Now that summer is over and we gear up for new beginnings it is important to consider the neediest among us. The Hunger Committee is prepared for another active year in fulfilling its mission to help stem the tide of hunger in our area. Our efforts focus on local food cupboards and shelters and we provide both direct financial support and provision of nutritious meals and canned foods. Our popular casserole blitzes, collection of canned goods in the church Narthex, and financial contributions in the white pew envelopes are vital parts of our mission.

Our calendar is filled with of volunteer opportunities. We will continue our tradition of casserole blitzes augmented by the contributions by our grade school children who participate with their own casserole blitzes throughout the year. We will continue to serve lunch at Our Brother's Place, a Philadelphia men's shelter. In

addition we have scheduled our traditional food and canned good drives such as the Souper Bowl project that coincides with the "big game." All of these activities and much more lead up to the culmination of our year's events -- our Annual Liaison Brunch where we heartily celebrate with our partners who lead and administer all of the shelters and food cupboards that we support.

A very busy year awaits and your help, as always, is greatly appreciated. Please feel free to join us on every third Thursday of the month at 7:00 p.m. in the Ministries Center to learn more and participate in our cause! Also look for opportunities to help through the annual Advent Gift Market catalog (formerly known as the Alternative Gift Market).

Peacemaking Offering for 2011

"A Harvest of Justice is Sown in Peace" James 3:18

We Christians long for a just and peaceful world where the worth of each person is valued, where greed no longer rules, hunger no longer exists, and where bullets and bombs no longer devastate. God's Word shows us the way a harvest of justice and righteousness can be sown by peacemakers -- planted and nurtured in words and deeds of peace. This is both an individual and a community path that we will honor on World Communion Sunday, October 2. We will gather in unity with believers around the world to signify this communal journey toward peace through justice.

The Peacemaking Offering undergirds a variety of efforts working toward peace and justice. The BMPC Peacemaking Committee continues to support Heeding God's Call, an interfaith challenge to the violence caused by illegal handguns. For more than a decade the Lower Merion Interfaith Thanksgiving Service, sponsored by the committee, has brought together more than 25 faith groups at an annual community service to increase interfaith understanding. The committee also has presented educational issues such as the recent transitions in Egypt and the Near East, children trapped in war zones, and a Christian understanding of forgiveness.

BMPC will use 25% of the Peacemaking offering for its own peacemaking programs. The other 75% will help our partners at the Presbytery, Synod, and General Assembly levels as they work on behalf of God's peacemaking throughout the world. Last year nearly \$2 million was given nationally, Bryn Mawr's Peacemaking Offering brought in over \$5,400, which provided \$1,400 for the congregation's use. Prayerfully consider how your offering can make a difference when it is augmented by hundreds of other contributions. Envelopes will be available at church on Oct. 2 and 9, or you may send your offering directly to the church.



*Join us on October 2 for
World Communion Sunday.*



Congregation Wide Mission Trip to Kentucky

November 2-6, Through Worldwide Ministries

“Exploring The Story” means exploring how our story intertwines with the stories of our partners across the globe. Join us as we travel to the Kentucky mine fields and explore the complexity of Appalachian poverty, the environmental impact of mining, and the rich spirituality and culture of our brothers and sisters in the region. We will be hosted by our partners AMERC (Appalachian Ministries Educational Resource Center) in Berea, KY.

Total cost approximately \$800-\$900 (travel, lodging, most meals). For more information: louisaumphres@bmpc.org.

Congregation Wide Day of Service

Spring saw another inspiring day of service as BMPC members dispersed throughout Philadelphia to work alongside one another and our partners in ministry...



CASSEROLE BLITZ: Members prepare meals for area pantries and soup kitchens. Organized by the Hunger Committee, the BMPC Casserole Blitzes keep our freezers stocked with food for the needy.



SHARE, a Food Program, is a nonprofit serving a regional network of community organizations engaged in food distribution, education and advocacy. We lent a hand by packing boxes.

THE OTHER CARPENTER: Members helped our partner, a nonprofit housing ministry that operates in West Philadelphia. Alongside the homeowners, we helped repair a house.



MILL CREEK FARM is dedicated to improving local access to fresh produce, building a healthy community and environment, and promoting a just and sustainable food system. We joined in by building fences and getting our hands dirty.



URBAN TREE CONNECTION: Garden lovers found their way to our partners at Urban Tree Connection, an amazing local nonprofit “building community one vacant lot at a time.” We pruned and planted at the Senior’s Rose Garden, helping Urban Tree continue its work in community-based, urban-greening projects.



HABITAT FOR HUMANITY. Members worked at their ReStore project, painting the interior of this newest service from Habitat – a store offering affordable quality used furniture, appliances, building supplies, to make home-ownership a reality for low-income families in Philadelphia.

Thanks again to the many who lifted shovels, boxes, spatulas and spirits – you made the day possible. [Mark your calendars for the next service day on October 1st](#); let’s join together with local partners to explore our shared Gospel story of service and community! To sign up contact CarolSchmidt@bmpc.org – please indicate the project, names of those participating, and a cell phone number if available.

September 2011

Sunday	Monday	Tuesday	Wednesday	Thursday	Friday	Saturday
Usual Sunday Schedule						
7:45 - 11:15 am Childcare 8 am Worship with Communion 9 am Art @ 9 (for age 3 and older) 10 am Worship with Senior Choir	10 am Church School (ages 2- Grade 5) 10 am Sunday School (Grade 6 - 12) 9, 8:30, 11:15 am Adult Education Class; check the website or brochure for details.	10 am Church School (ages 2- Grade 5) 10 am Sunday School (Grade 6 - 12) 9, 8:30, 11:15 am Adult Education Class; check the website or brochure for details.	10:30 am, PW Horizons Bible Study	Tuesday: Career Counseling 7:30 pm Tues. Morning Study Group 8:30 am Preacher's Brown Bag Bible Study 12 pm Tutoring 6:50 pm Wednesday: Choir Rehearsals (check for details.) 5 pm Weekly Wednesday Dinner 6:50 pm Tutoring Thursday: Prayer Group 8:30 am Torah Study 11 am Senior Choir Rehearsal 7 pm Saturday: Sat. Morning Men's Group 7 am	Weekly Events	3
4	5 Labor Day Office Closed	6 11 am, Labyrinth	7 10:30 am, PW Horizons Bible Study			10 7 am, Hunger Committee Casserole Blitz
11 11:15 am, Youth Kick Off Meeting	12	13 9:15 am, Y-Group Kick-Off Brunch 1 pm, Parkinson Support Group	14 9:30 am, Senior Men's Discussion Group			17
18 4 pm, SWELL (Contemporary Worship Service) The Rev. Kellen Smith's Installation	19 9:15 am, PW Caring & Crafts	20 9:30 am PW Dimensions in Lit. Support Group 1:30 pm, Parkinson Support Group 7 pm, Urban Suburban Book Group	21 12 pm, Senior Club Lunch 7 pm, Caregiver Support Group	22	23 6 pm, PW Holy Leisure	24
25 11 am, Fall Festival 4 pm Youth Group 6 pm, Parenting Series	26 1:30 pm, PW Perspectives in Music	27 9:30 am Y-Group Book Group 12:45 pm, PW Great Decisions 1:30 pm, Parkinson Support Group	28 9:30 am, Senior Men's Discussion Group	29	30	October 1 9am, Congregation Wide Day of Service 6 pm, Sacred Shelter Open House & Spaghetti Dinner

October 2011

Sunday	Monday	Tuesday	Wednesday	Thursday	Friday	Saturday
2 4 pm, Youth Group	3	4 11 am, Labyrinth 1:30 pm, Parkinson Support Group	5 10:30 am, PW Horizons Bible Study			
9 4 pm, Youth Group	10	11 9:15 am, Y-Group Monthly Meeting 1:30 pm, Parkinson Support Group 7 pm, Session on the Mainline	12	13	14 6 pm, Doing Good Together "World Food Day" Event	15 8:30 am, Leadership Retreat
16 4 pm, SWELL (Contemporary Worship Service) 10 am Grade 3 Bible Presentation (8:45 Family Breakfast)	17 9:15 am, PW Caring & Crafts	18 9:30 am, PW Dimensions in Lit. 1:30 pm, Parkinson Support Group 7 pm, Urban Suburban Book Group	19 12 pm, Senior Club Lunch 7 pm, Caregiver Support Group	20	Usual Sunday Schedule 7:45 - 11:15 am Childcare 8 am Worship with Communion 9 am Art @ 9 (for age 3 and older) 10 am Worship with Senior Choir 10 am Church School (ages 2- Grade 5) 10 am Sunday School (Grade 6 - 12) 9, 8:30, 11:15 am Adult Education Class; check for details. Weekly Events Tuesday: Career Counseling 7:30 pm Tues. Morning Study Group 8:30 am Preacher's Brown Bag Bible Study 12 pm Tutoring 6:50 pm Wednesday: Choir Rehearsals (check for details.) 5 pm Weekly Wednesday Dinner 6:50 pm Tutoring Thursday: Prayer Group 8:30 am Torah Study 11 am Senior Choir Rehearsal 7 pm Saturday: Sat. Morning Men's Group 7 am	
23 4 pm, Youth Group 8:30 am, Membership Orientation 2 pm, Piano Recital with Jeff Brillhart & Laura Ward	24 1:30 pm, PW Perspectives in Music	25 12:45 pm PW Great Decisions 1:30 pm, Parkinson Support Group 7:30 pm, Y-Group Book Group	26 9:30 am, Senior Men's Discussion Group	27		
30 9 am, Session Breakfast with new members 4 pm, Youth Group	31 1:30 pm, PW Perspectives in Music					

Learning from Philadelphia, (or When Purpose Becomes Style): A story in architecture by Robert Venturi and Denise Scott Brown

by the Rev. Dr. James Carter

Like a good writer who tells a story we want to reread again and again, a good architect describes space and organizes our experience in it so that we want to return to that place often. Some of my favorite buildings do that for me, as I imagine they do for you, and I find myself drawn back to them to be assured that order and form and beauty are not transient realities; they remain influential in our time and beyond.

As implied above, a story by a gifted writer can do much the same thing. There are certain books I pull off the shelf in my library to read again, much as our grown children hold on to the books of stories they loved as children in order to share them with their own children. I could name a few favorites but my purpose is to direct your memory in such a way that you recall *your* favorite stories, especially the ones you share with others. When our family is together, as they were in July here in Bryn Mawr, I always am delighted to find that among all of the new stories the grandchildren bring with them there still is appreciation for the books on the shelf that were read to their parents when they were that age. It is a timely and, perhaps, timeless blending of classic and modern, old and new, wise and brilliant. It warms my heart to know that the younger generation finds value in much that influenced and formed us.



Go with me from here, if you will, back to the architectural allusion with which I opened these jottings. I was observing that there are certain spaces defined by a building of wood, brick, stone or other material that give joy to the visual senses and make us glad to be near them. After appreciating the space from the outside, we want to go inside to explore another, often surprising, dimension.

But for me to make this rather long reach of an analogy work for you, I need to mention one more fascinating parallel between defining space and telling a story. I expect that, for an architect, fitting a building into its context, its

near-neighboring buildings, has to be one of the artist's biggest challenges. In the case of a building that will be an addition to an established classic piece of architecture, the challenge is at its highest point. That is where the gifts of the *architect-as-story-teller* come into play. How well this is accomplished depends on several things, particularly attention to the context in which the new building (story) is being introduced. If it fits well with what has come before, or fulfills the future possibilities of the original building's design, then we say the new edition is a success. It has done all it can, and more, to show us the value and outstanding features of both buildings (stories) in a way that would not have been as clear if they had been presented separately. (Think of New Testament fulfilling Old Testament, or Part II of a Dickens novel bringing past events into the present and promising a robust future).



As with our stories fulfilling those of earlier generations that we dare not forget, so it is with a creative addition to an original design, in this case a museum building at Oberlin College by Cass Gilbert who later gave us the Supreme Court Building in the nation's capital. The new addition, designed by Philadelphia's own Robert Venturi and Denise Scott Brown, is an example of contextual expression (architecture, in this case) that works perfectly to complement the original Beaux Arts edition by Gilbert.

One reason I find the Venturi edition so delightful is that it just looks like “we're going to have some fun inside.” It's the “patchwork quilt design” of the new building, as Ada Louise Huxtable once called it, that captures our attention and seems to draw us in, promising that this will be much more than a tour of historic themes. New discoveries will be made as well; the contemporary design is our clue. Yet it is contemporary design done with respect for the original, not unlike our contemporary stories that complement older ones about our founding as a congregation. (Think of Ada Mutch's story of her family's plan to travel from Scotland in April 1912 on the *Titanic*, only to postpone the trip at the last minute due to family illness. The story makes us appreciate all the more the contribution of Dr. Mutch and his family to BMPC).

In this church year ahead, with the theme *Exploring The Story*, we will have multiple opportunities to practice what we can learn from creative story tellers of all kinds, including imaginative architectural story tellers like Philadelphia's Robert Venturi and his wife, Denise Scott Brown.

May our year together, telling our old and new stories, be as true, as accurate, as playful and as inspired as the Venturis' new museum in the shadow of the old museum, each complementing and thus expanding the reach of the other.



The Messenger
Bryn Mawr Presbyterian Church
625 Montgomery Avenue
Bryn Mawr, PA 19010
610-525-2821

The Messenger (USPS #341840) Sept/Oct 2011, volume 114 issue 11, is published bi-monthly by the Bryn Mawr Presbyterian Church. Periodical postage paid at Wayne, PA and additional offices.

Postmaster: Send Address Changes To
The Messenger
Bryn Mawr Presbyterian Church
625 Montgomery Avenue
Bryn Mawr, PA 19010



*Remembrance
Compassion
Hope
Healing
Reconciliation*

A Community Comes Together:
A Multi-faith Commemoration of September 11th

3:30-4:00 p.m. Personal prayer and meditation
4:00-4:30 p.m. Music and silent reflection
4:30-5:00 p.m. Multi-faith service

St. Luke United Methodist Church, 568 Montgomery Ave. (at Pennswood Rd.), Bryn Mawr

Weekly Wednesday Dinner

Beginning on Wednesday, September 14
Congregational Hall, 5:00 - 6:30 p.m.



Dinner and a time to connect
with people of all ages.

\$6/person, \$25max/family
(Booklets of 10 tickets/\$50)

For info contact: LydiaBarrett@bmprc.org