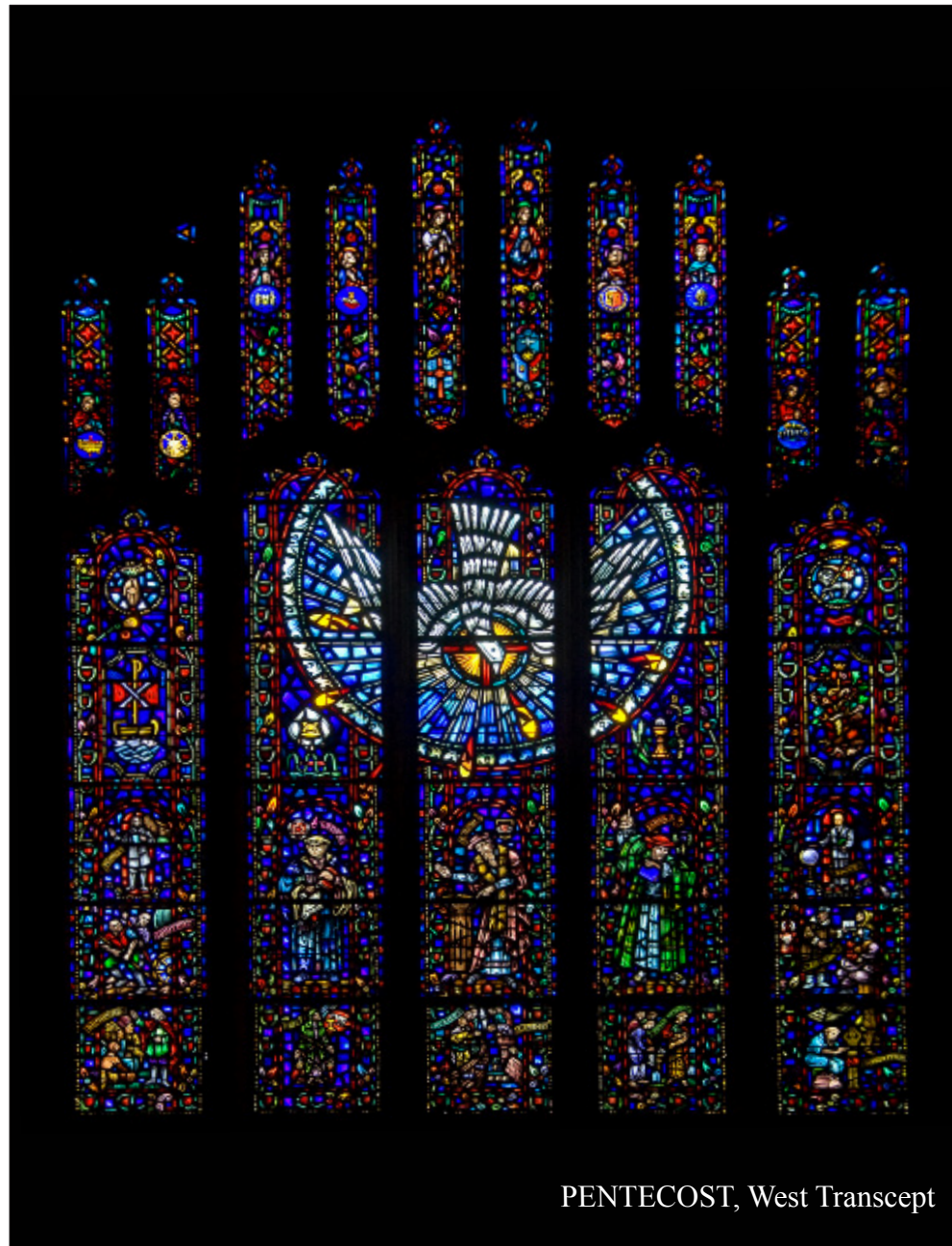


Bryn Mawr Presbyterian Church

SUNDAY, FEBRUARY 5, 2012

8:00 AM, CHAPEL

FORWARD IN FAITH SUNDAY



PENTECOST, West Transcept

The focus is the Descending Dove, the Holy Spirit with the tongues of fire, as Jesus had promised, reaching out to the growing church. Beneath the Dove are the two sacraments: the scallop shell, fish and three drops of water (Trinity) for baptism, and grapes, wheat and the cup with bread for Communion.

Order of Worship

GATHERING AROUND THE WORD

As we gather for worship, we encourage you to spend time in prayer and reflection.

PRELUDE

WELCOME

Louisa Watkins Umphres

(Please fill in the Fellowship Register at the end of your pew.)

CALL TO WORSHIP

In the Lord *(sing twice)*

TAIZE



In the Lord I'll be ev-er thank-ful, in the Lord I will re-joice! Look to God, do not be a-



fraid; lift up your voic-es, the Lord is near; lift up your voic-es, the Lord is near. In the

CALL TO CONFESSION

Louisa Watkins Umphres

PRAYER OF CONFESSION *(in unison)*

Louisa Watkins Umphres

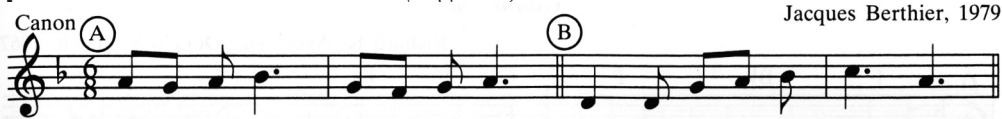
Eternal God, in every age you have raised up men and women to live and die in faith. Forgive our indifference to your will. You have commanded us to speak, but we have been silent. You have called us to do what is just, but we have been fearful. Have mercy on us, your faithless servants. Keep before us faithful people for us to follow so that by the power of your Holy Spirit we may grow in the knowledge of our Lord and Savior Jesus Christ, to the praise of your holy name.

(A moment of silence for personal reflection and confession.)

ASSURANCE OF PARDON

Louisa Watkins Umphres

† CONGREGATIONAL RESPONSE *(sing twice)*



Glo - ri - a, glo - ri - a, in ex - cel - sis De - o!



Glo - ri - a, glo - ri - a, al - le - lu - ia, al - le - lu - ia!

HEARING THE WORD

We approach God's Word prayerfully, trusting that as scripture is read and proclaimed, our hearts and minds will be opened to transformation and inspiration by the Holy Spirit.

PRAYER FOR ILLUMINATION

John Frazier

FIRST LESSON

Jeremiah 32:1-15 *(p. 736 in pew Bible)*

John Frazier

Worship

PSALTER

Psalm 147

All sing at the Cantor's cue:



We sing to you Lord, for you are good; it is right to praise you.

SECOND LESSON

Ephesians 3:20-21 *(p. 193 in pew Bible)* R. Charles Grant

One: The Word of the Lord. All: **Thanks be to God.**

SERMON

A Big Holy Audacious Goal

R. Charles Grant

RESPONDING TO THE WORD

We respond to God's word with thanksgiving and prayer.

As we come forward to celebrate communion, we are invited to place offerings of prayer cards and monetary gifts in the baskets located at the front of the Chapel.

† HYMN 276

Great Is Thy Faithfulness

FAITHFULNESS

SACRAMENT OF THE LORD'S SUPPER

Louisa Watkins Umphres

THE INVITATION TO COMMUNION AND THE GREAT THANKSGIVING

One: The Lord be with you.

All: **And also with you.**

One: Lift up your hearts.

All: **We lift them to the Lord.**

One: Let us give thanks to the Lord our God.

All: **It is right to give our thanks and praise.**

THE LORD'S PRAYER *(in unison)*

Our Father who art in heaven, hallowed be thy name; thy kingdom come; thy will be done, on earth as it is in heaven. Give us this day our daily bread. And forgive us our trespasses, as we forgive those who trespass against us. And lead us not into temptation, but deliver us from evil. For thine is the kingdom and the power and the glory forever. Amen.

THE COMMUNION

You are invited to come forward, using the center aisle, to partake of the Lord's Supper. Please break off a piece of bread, dip it in the cup and return to your seat, using the side aisle. If you prefer gluten- and casein-free bread, please partake from the center table. If you desire to be served in your seat, please raise your hand to alert an usher.

MUSIC AT COMMUNION

PRAYERS OF THE PEOPLE

R. Charles Grant

MINISTRY MOMENT

Forward in Faith
Bob Overhiser and Meg Holdsworth

† **HYMN** Hymn for the Mission of Bryn Mawr Presbyterian Church DUKE STREET
(See inside back cover of hymnal)

† **SENDING AND PASSING OF THE PEACE** R. Charles Grant

One: The peace of Christ be with you. All: **And also with you.**

POSTLUDE

❖ Worship Notes ❖



"I am the resurrection and the life."

J. M. Ada Mutch

2-3-1905 ~ 1-27-2012

Memorial Service: February 11, 2012, 11:00 a.m.

We invite you to share your gifts and talents in leading worship during the 8:00 a.m. service. You may serve in a variety of ways, from welcoming others as an usher, reading prayers or scripture, serving communion, to providing special music or sharing other artistic gifts.

If you are interested in ushering, contact Phoebe Sheftel, pasheftel@comcast.net or 610-526-1802.

If you would like to participate in other ways or explore how you might participate, contact Louisa Watkins Umphres, louisaumphres@bmpc.org or 610-525-2821, ext. 8828.



Elder John Frazier
is assisting with communion.



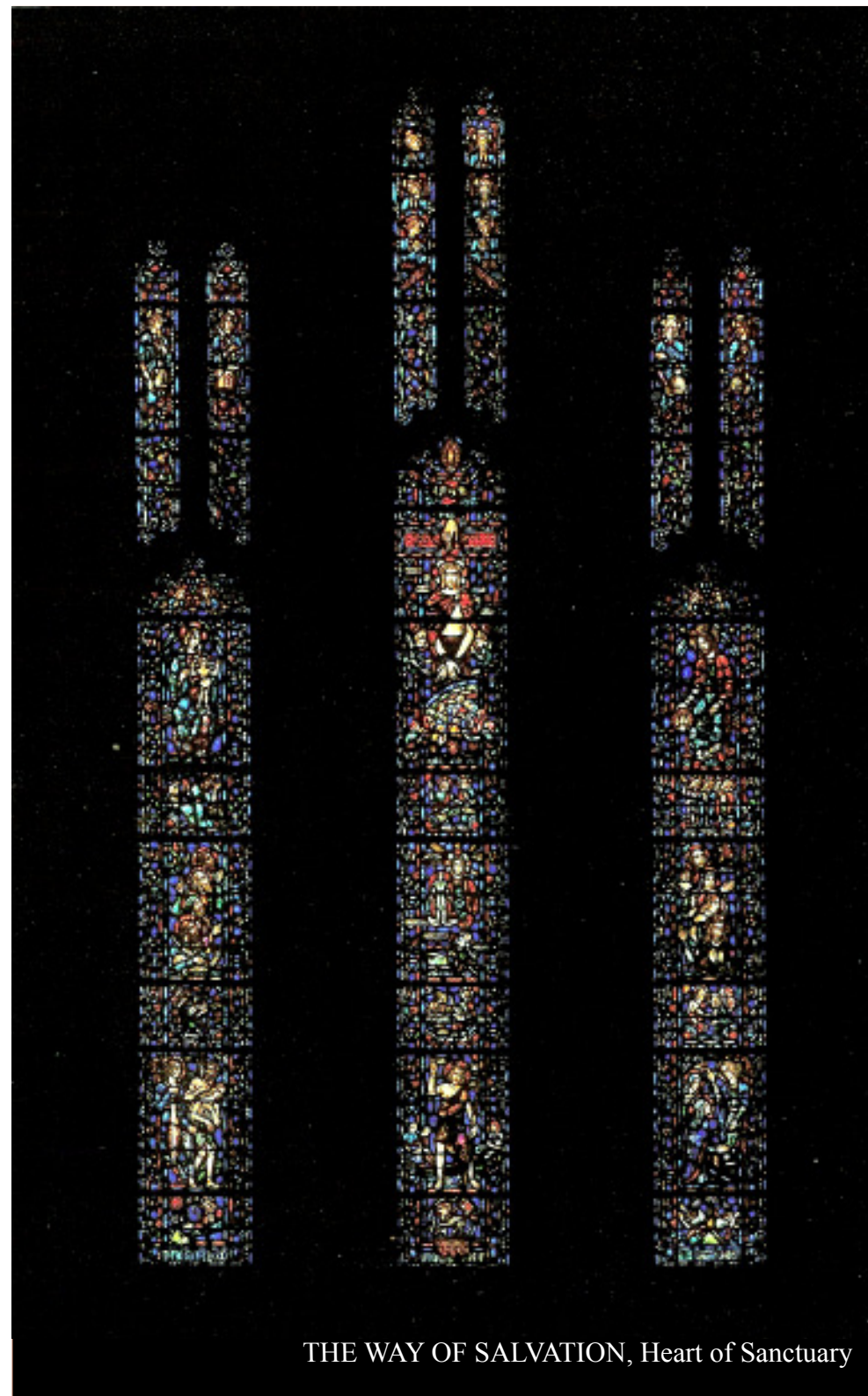
Foward in Faith Campaign Kick-Off
Today at 11:15 a.m. in Congregational Hall & Gym.
Join us for a congregation-wide reception featuring a new video, crafts for the children and light refreshments.



Joanne Solarz
is leaving her position as Executive Director of Operations to pursue other career objectives and to devote more time to her own faith community. A reception in her honor will be held in the Court Sunday, February 12 immediately following the 10:00 a.m. service.

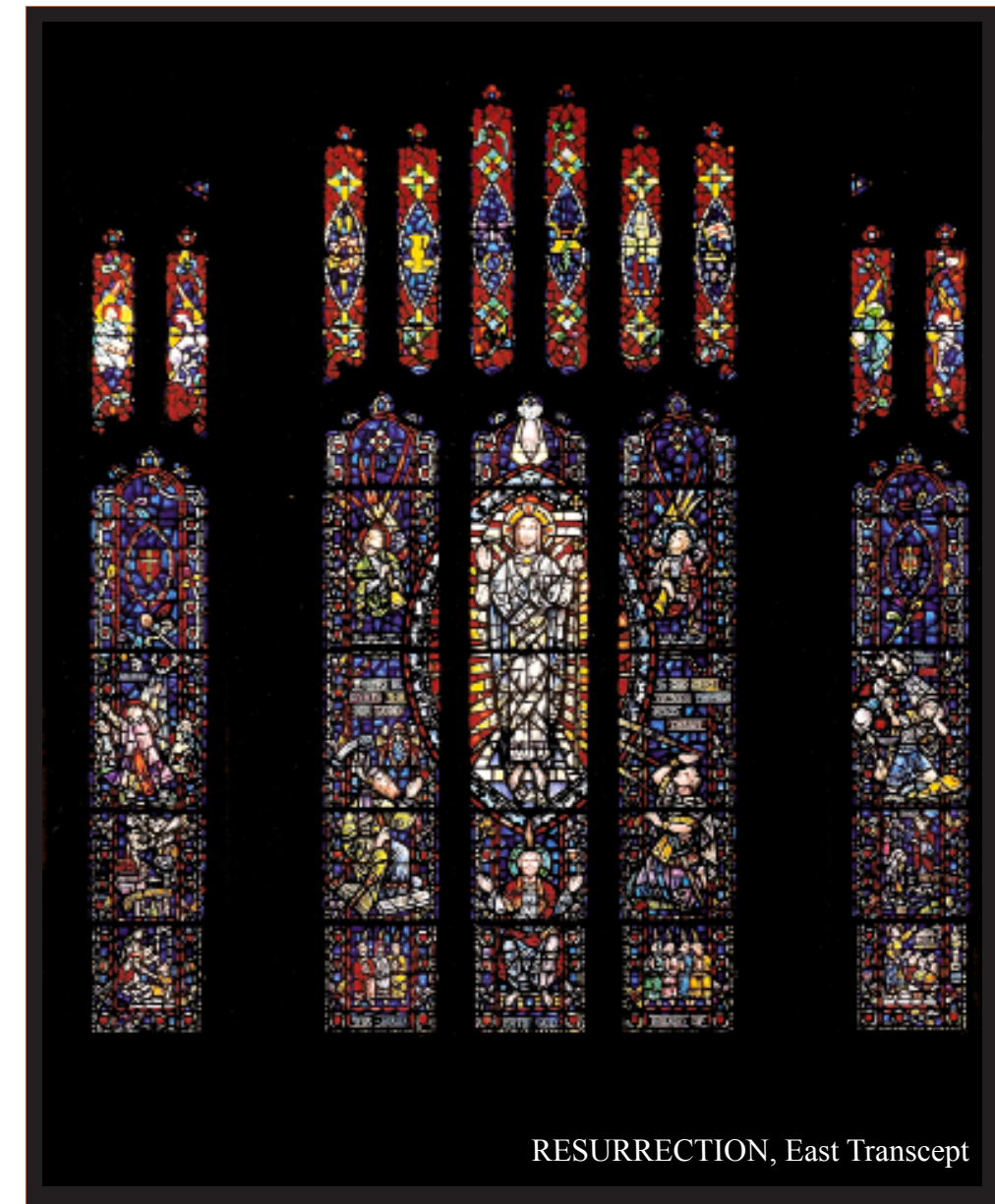


† Please stand, if able.



THE WAY OF SALVATION, Heart of Sanctuary

This most important window, situated in the heart of the sanctuary, is a witness to the congregation of the very foundation of our religion. The prominent color is blue, and in the language of stained glass, this means reverence, faith and salvation. Jesus Christ crucified, a symbolic crucifixion, is the main figure.



RESURRECTION, East Transcept

The main figure is Jesus Christ ascending into Heaven, the Hand of God above Him. The small cross at the top of the left panel symbolizes Faith. The anchor of Hope is at the top of the right panel – “Which hope we have as an anchor of the soul, both sure and steadfast...” (Hebrews 6:19) The window speaks of Faith, Hope and Love: the cross, the anchor and Jesus, the center of all, Love.

625 Montgomery Avenue, Bryn Mawr, PA 19010

Office Phone: 610-525-2821

Office Fax: 610-525-9476

Website: www.bmpc.org



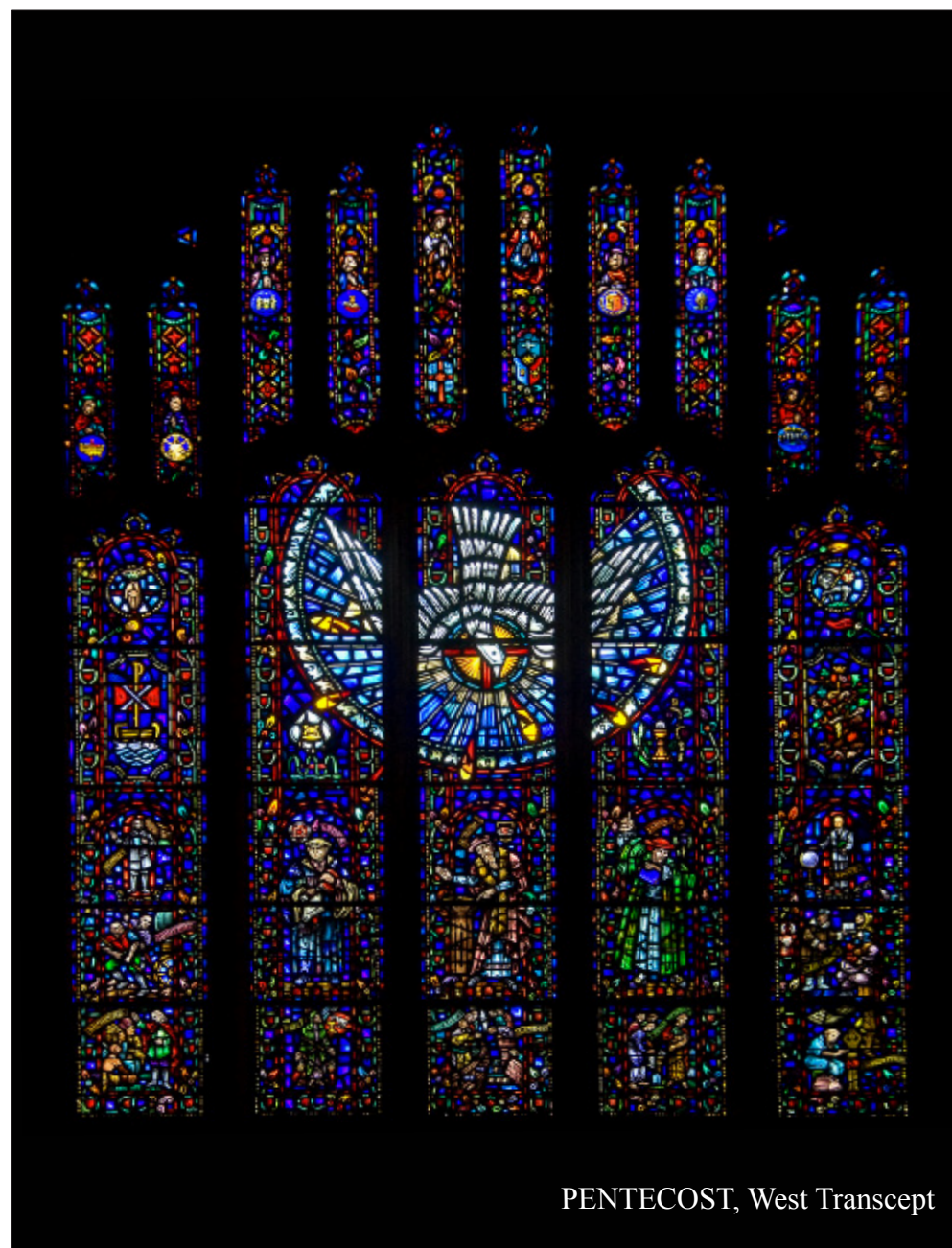
Main Line Adult Day Center: 610-527-4220
The Middleton Center: 610-525-0766; mail@middletoncenter.org
The Weekday School: 610-525-2821, ext. 8840

Bryn Mawr Presbyterian Church

SUNDAY, FEBRUARY 5, 2012

10:00 AM, SANCTUARY

FORWARD IN FAITH SUNDAY



PENTECOST, West Transept

The focus is the Descending Dove, the Holy Spirit with the tongues of fire, as Jesus had promised, reaching out to the growing church. Beneath the Dove are the two sacraments: the scallop shell, fish and three drops of water (Trinity) for baptism, and grapes, wheat and the cup with bread for Communion.*

Order of

Worship

As we gather for worship, some prepare by greeting each other with words of peace, others with meditation and prayer. Please be respectful of how those around you prepare. Kindly refrain from taking photos or videos and please silence cell phones.

GATHERING OF GOD'S PEOPLE

PRELUDE God of Grace and God of Glory RHONDDA
Tintinnabulators

WELCOME James L. Carter

CALL TO WORSHIP Louisa Watkins Umphres

One: Lord, you have been our refuge,
All: **From one generation to another.**
One: Before the mountains were brought forth,
or the land and the sea were born,
All: **From age to age you are God.**
One: Satisfy us by your loving-kindness in the morning,
All: **So we shall rejoice and be glad all the days of our life.**
One: May the graciousness of the Lord our God be upon us,
All: **And prosper the work of our hands.**

† **HYMN 429** Lord, You Give the Great Commission ABBOT'S LEIGH

CALL TO CONFESSION AND

PRAYER OF CONFESSION (*in unison*) Louisa Watkins Umphres
Eternal God, in every age you have raised up men and women to live and die in faith. Forgive our indifference to your will. You have commanded us to speak, but we have been silent. You have called us to do what is just, but we have been fearful. Have mercy on us, your faithless servants. Keep before us faithful people for us to follow so that by the power of your Holy Spirit we may grow in the knowledge of our Lord and Savior Jesus Christ, to the praise of your holy name. Amen.
(A moment of silence for personal reflection and confession.)

ASSURANCE OF PARDON Louisa Watkins Umphres

† **GLORIA PATRI** (*in unison*) (*Hymnal 579*)
Glory be to the Father and to the Son and to the Holy Ghost; as it was in the beginning, is now and ever shall be, world without end. Amen, Amen.
(Children are invited to come forward for the Children's Moment.)

PROCLAMATION OF THE WORD

CHILDREN'S MOMENT Children are invited to sit in the front pews.

ANTHEM Little Lamb, Who Made Thee? William Bradley Roberts
St. Cecilia Girl Choir and St. Andrew Boy Choir

Little lamb, who made thee? Dost thou know who made thee? Gave thee life and bid thee feed by the stream and o'er the mead; gave thee clothing of delight, softest clothing, woolly bright; gave thee such a tender voice, making all the vales rejoice. Little lamb, who made thee? Dost thou know who made thee? Little lamb, I'll tell thee, little lamb, I'll tell thee. He is called by thy name. For he calls himself a lamb. He is meek and he is mild; he became a little child. I a child and thou a lamb; we are called by his name. Little lamb, God bless thee; little lamb, God bless thee.

THE SACRAMENT OF BAPTISM

Louisa Watkins Umphres
Elder Jen Bowers assisting

One: Do we, as members of the church of Jesus Christ, promise to guide and nurture these children by word and deed, with love and prayer, encouraging them to know and follow Christ and to be faithful members of his church?
All: **We do.**

† **AFFIRMATION OF FAITH** (*in unison*) Louisa Watkins Umphres
I believe in God, the Father Almighty, Maker of heaven and earth, and in Jesus Christ his only Son our Lord; who was conceived by the Holy Ghost, born of the Virgin Mary, suffered under Pontius Pilate, was crucified, dead, and buried; he descended into hell; the third day he rose again from the dead; he ascended into heaven, and sitteth on the right hand of God the Father Almighty; from thence he shall come to judge the quick and the dead. I believe in the Holy Ghost; the holy catholic church; the communion of saints; the forgiveness of sins; the resurrection of the body; and the life everlasting. Amen. ~ *The Apostles' Creed*

SENDING HYMN Go now, Children, with our Blessing
(See *Worship Notes* section for Sending Hymn.)

FIRST LESSON Jeremiah 32:1-15 (*p. 736 in pew Bible*) James L. Carter

SECOND LESSON Ephesians 3:20-21 (*p. 193 in pew Bible*) R. Charles Grant

SERMON *A Big Holy Audacious Goal* R. Charles Grant

† **HYMN 276** Great Is Thy Faithfulness FAITHFULNESS
(Please be seated for the Offering.)

RESPONSE TO THE WORD

(Please fill in the Fellowship Register at the end of your pew; pass it down your row and back again.)

OFFERING AND MINISTRY MOMENT R. Charles Grant
Bob Overhiser and Meg Holdsworth on behalf of Forward in Faith

OFFERTORY ANTHEM They That Wait Upon the Lord Gerald Near
(See *Worship Notes* section for text.)

† **DOXOLOGY** (*in unison*) (*Hymnal 592*)
Praise God, from whom all blessings flow; praise God, all creatures here below; praise God above, ye heavenly host; praise Father, Son, and Holy Ghost. Amen.

PRAYERS OF THE PEOPLE AND THE LORD'S PRAYER (*in unison*) James L. Carter

Our Father who art in heaven, hallowed be thy name; thy kingdom come; thy will be done, on earth as it is in heaven. Give us this day our daily bread. And forgive us our trespasses, as we forgive those who trespass against us. And lead us not into temptation, but deliver us from evil. For thine is the kingdom, and the power, and the glory forever. Amen.

† **HYMN** Hymn for the Mission of Bryn Mawr Presbyterian Church DUKE STREET
(See inside back cover of hymnal)

BENEDICTION WITH CHORAL RESPONSE R. Charles Grant
Following the benediction the congregation is invited to exit the Sanctuary, guided by the ushers, and proceed to Congregational Hall.

❖ Worship Notes ❖

Go now, Children, with our Blessing



Go now, children with our blessing, to love and serve the Lord. May God
 Bless you, May God guard you, May the light of God shine upon you, and may
 God be gracious to you. May the presence of God be with you. May the
 presence of God be with you, and give you peace.

OFFERTORY ANTHEM They That Wait Upon the Lord Gerald Near
 They that wait upon the Lord shall renew their strength; they shall mount up with wings as eagles; they shall run and not be weary; they shall walk and not faint.

†
"I am the resurrection and the life."
 J. M. Ada Mutch
 February 3, 1905 ~ January 27, 2012
 Memorial Service: February 11, 2012, 11:00 a.m.

The flowers in the Sanctuary
 are given to the glory of God and in loving memory of
 Judith MacFeely Peely



The following are presented for the Sacrament of Holy Baptism:
 Samuel Henry Giampetroni
 and
 William Anderson Giampetroni
 sons of Susan Davis and Michael David Giampetroni



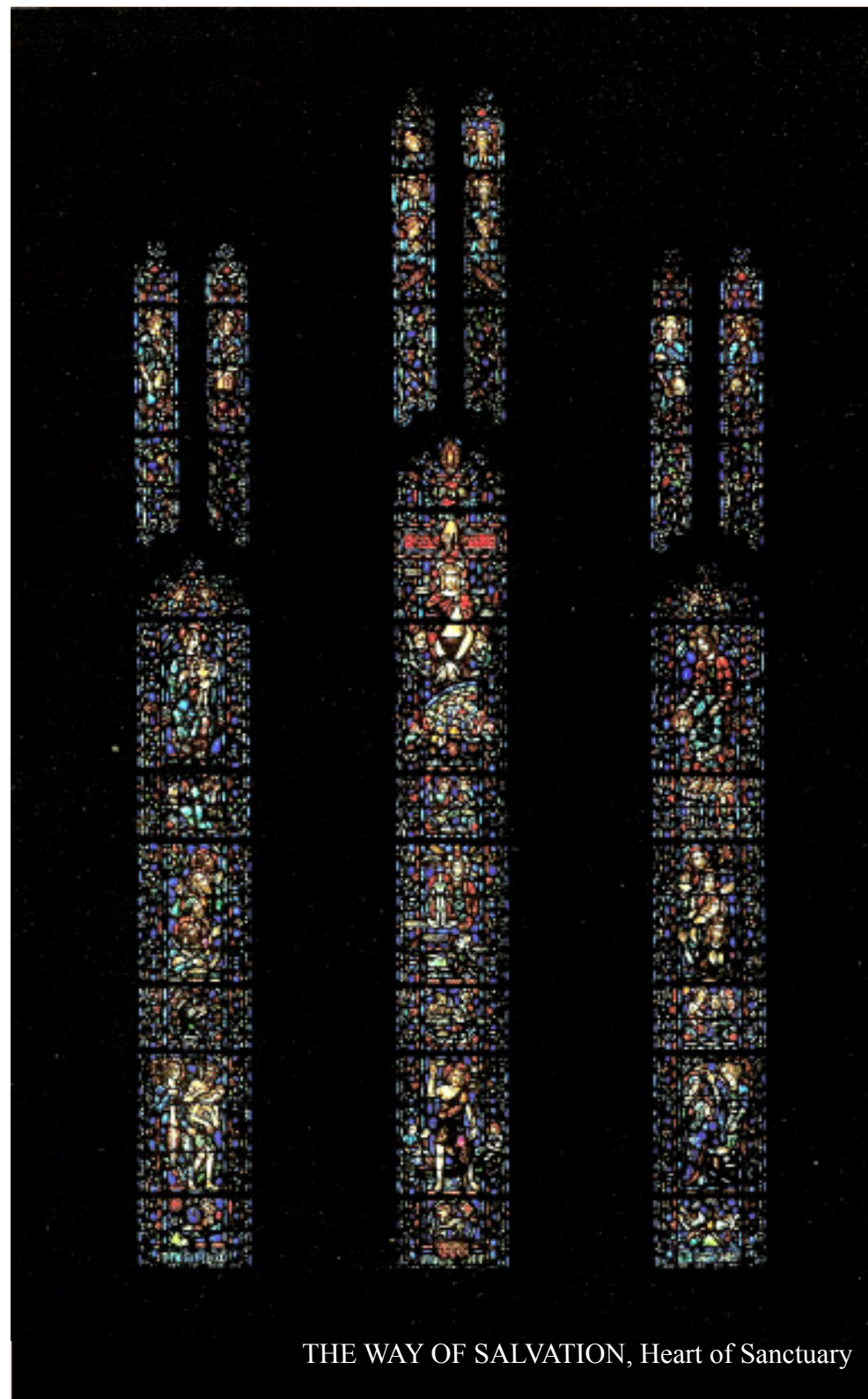
Joanne Solarz is leaving her position as Executive Director of Operations to pursue other career objectives and to devote more time to her own faith community. A reception in her honor will be held in the Court on Sunday, February 12, immediately following the 10:00 a.m. service.



Alan Willoughby will play the carillon following the service.

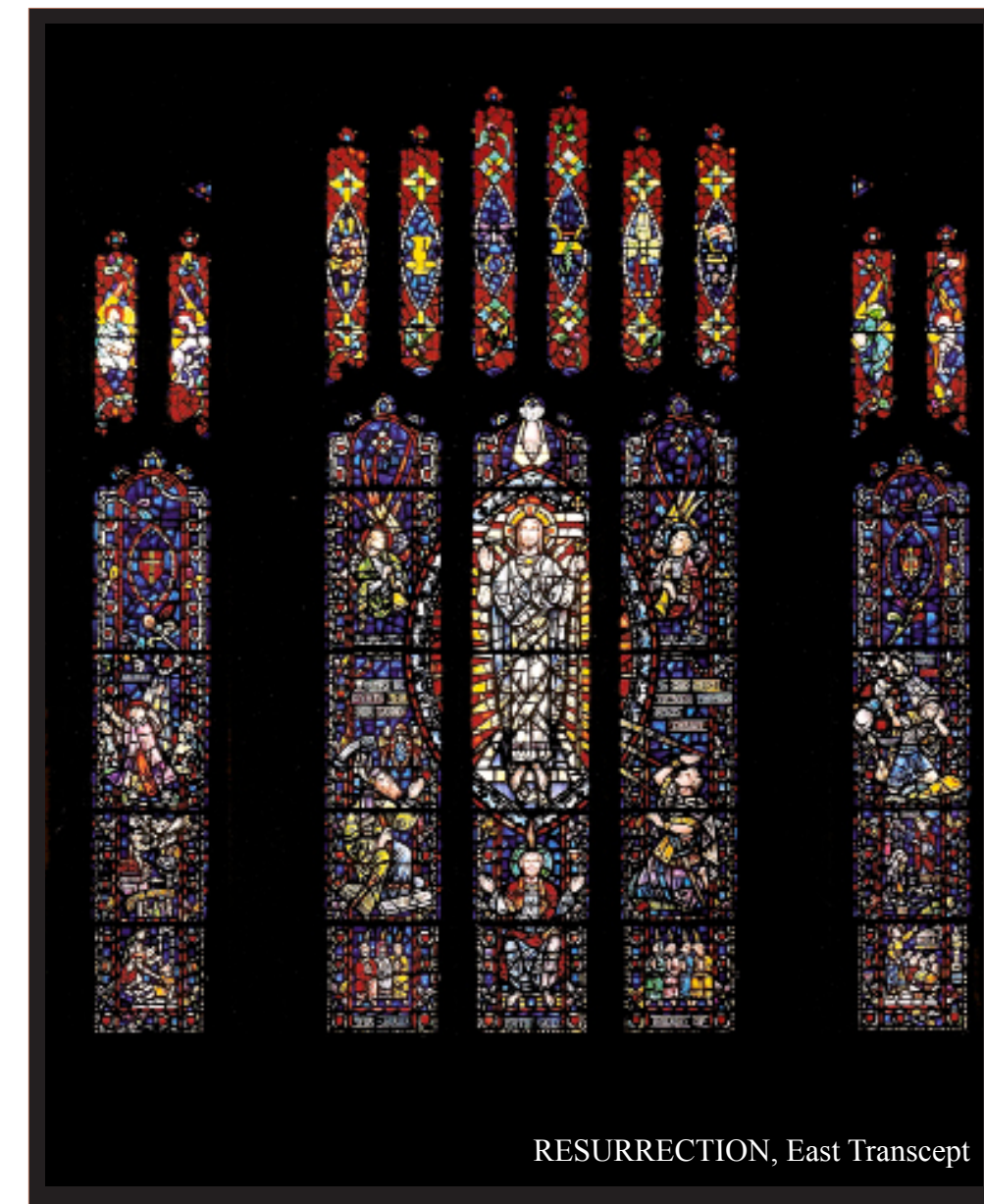


† Please stand, if able.



This most important window, situated in the heart of the sanctuary, is a witness to the congregation of the very foundation of our religion. The prominent color is blue, and in the language of stained glass, this means reverence, faith and salvation. Jesus Christ crucified, a symbolic crucifixion, is the main figure.*

*From *Worship the Lord in the Beauty of Holiness* by Kathie Walton, in tribute to Samuel L. Veitch in 1982.



The main figure is Jesus Christ ascending into Heaven, the Hand of God above Him. The small cross at the top of the left panel symbolizes Faith. The anchor of Hope is at the top of the right panel – “Which hope we have as an anchor of the soul, both sure and steadfast...” (Hebrews 6:19) The window speaks of Faith, Hope and Love: the cross, the anchor and Jesus, the center of all, Love.*

625 Montgomery Avenue, Bryn Mawr, PA 19010
 Office Phone: 610-525-2821
 Office Fax: 610-525-9476
 Website: www.bmpc.org

❖

Main Line Adult Day Center: 610-527-4220
 The Middleton Center: 610-525-0766; mail@middletoncenter.org
 The Weekday School: 610-525-2821, ext. 8840



The Week of February 5 - February 12, 2012

WELCOME TO BMPC! We want to support you in your journey to better understand and trust the God who is revealed to us in Christ. We invite you to explore anything of interest to you here and to make a habit of worshipping with us. Please stop at the Welcome Center at the left of the main church entrance if you are a newcomer, have questions, or would like more information about our programs and ministries. All are invited to join us at the Forward in Faith reception in Congregational Hall at 11:15 a.m.

WE WANT YOU TO FEEL COMFORTABLE HERE. If you need assistance, ask an usher or anyone wearing a nametag. Nursery care with electronic pagers is available in our Education Building.

BMPC ONLINE: Check our website, www.bmpc.org, for our church calendar, pastors' columns, sermon files, newsletters and more. To receive our electronic newsletter, BMPC eNews, subscribe via our website or add your email address to the Fellowship Register when it is passed.

TODAY, FEBRUARY 5

- **FORWARD IN FAITH CAMPAIGN KICK-OFF.** 11:15 a.m., Congregational Hall & Gym. Join us after worship for a congregation-wide reception featuring a new video, crafts for the children and light refreshments.
- **"SOUPER BOWL OF CARING."** Our Hunger Committee and BMPC Youth are collecting donations of cash and/or canned soups, stews, ravioli, and other high protein canned goods today. Baskets are available in the Narthex, Ministries Center, and Ed. Building.
- **SUPER BOWL PARTY FOR YOUTH, THEIR FAMILIES AND FRIENDS.** 6:00 p.m., Pastor Kellen's manse. Enjoy great food and fellowship during the big game and vote for the best commercial! Bring a snack to share.

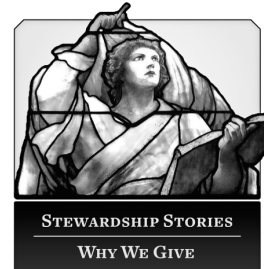
UPCOMING EVENTS

**Details inside*

- **WALKING THE LABYRINTH IN PRAYER.** Tues., Feb. 7, 11:00 a.m.-8:00 p.m., Congregational Hall
- **FAMILY FUN FRIDAY.** Fri., Feb. 10, 6:00-8:00 pm, Congregational Hall
- **YOUTH SKI TRIP TO SHAWNEE MOUNTAIN, POCOCOS.** Sat., Feb. 11-Sun., Feb 12
- **YOUNG ARTISTS CONCERT.** Sun., Feb. 12, 2:00 p.m., Sanctuary
- **PRESBYTERIAN WOMEN'S ANNUAL RETREAT: THEIR STORY, OUR STORY.** Fri., Feb. 24, 6:00 p.m., at the manse of the Rev. Jacqui Van Vliet and Sat., Feb. 25, 9:00 a.m., at BMPC

STEWARDSHIP 2012

Thanks to all who have pledged in support of our 2012 Stewardship Campaign. Thus far, we have reached 90% of our annual goal. If you have not pledged, we encourage you to do so by filling out a pledge card and either dropping it in the offering plate or in the mail. You may also pledge online at www.bmpc.org/bmpcpledge.htm.



WEEKLY CALENDAR: February 5 - February 12, 2012

Sunday, February 5, 2012

- 8:00 a.m. *Worship with Communion in the Chapel*
The Rev. Charles Grant will preach.
- 10:00 a.m. *Worship with Senior Choir in the Sanctuary.*
The Rev. Charles Grant will preach.

Childcare for infants and toddlers, Ed. Bldg., Room 102, 7:45-11:15 a.m.

- 8:30 a.m. Adult Class: Book Discussion, Conference Room
- 9:00 a.m. Sunday Choir School, Fine Arts Center
- 9:00 a.m. Art @ 9 for age 3 and older, Ed. Bldg., Room 201
- 9:45 a.m. Pre-Baptism Meeting, Converse House
- 10:00 a.m. BLINK: Grades K-5 begin worship with families in Sanctuary
- 10:00 a.m. Church School for children age 2 (by 9/1/2011) - PreK, Ed. Bldg.
- 10:00 a.m. Confirmation, Middle & High School Meet-up, Gym
- 10:15 a.m. Confirmation Class, Witherspoon Parlor
- 10:15 a.m. Middle and High School Sunday School, Loft
- 10:15 a.m. Grades 3-5 remain in worship for the entire hour
- 10:15 a.m. Grades K-2 classes meet in Ed. Bldg.
- 11:15 a.m. Forward in Faith Campaign Kick-Off, Congregational Hall, Gym
- 11:15 a.m. Adult Class: Our Stories, Muslim Stories, and God's Story, Witherspoon Parlor
- 6:00 p.m. Super Bowl Party for Youth, Their Families and Friends, Pastor Kellen's manse

Monday, February 6, 2012

- 9:30 a.m. DanceFit, Gym
- 4:00 p.m. Environmental Justice Committee, Conference Room
- 7:00 p.m. Congregational Life Council, Conference Room
- 7:30 p.m. Pastor Nominating Committee, Fullerton Room
- 7:30 p.m. Recovery International, Gloucester Room

Tuesday, February 7, 2012

- 8:30 a.m. Tuesday Morning Study Group, Converse House
- 10:30 a.m. Tai Chi, Gym
- 11:00 a.m. Walking the Labyrinth in Prayer, Congregational Hall
- 11:30 a.m. Gernot Candolini Media Event, Ministries Center Balcony
- 12:00 p.m. Preacher's Brown Bag Bible Study, Conference Room
- 1:30 p.m. Parkinson's Disease Support Group, Gloucester Room, Witherspoon Parlor
- 6:00 p.m. Outreach Committee - West Philadelphia Sub-Committee, Pastors Conference Room
- 6:50 p.m. Tutoring Program, Ed. Bldg.
- 7:00 p.m. Parenting on the Main Line, Main Line Reform Temple
- 7:00 p.m. Deacons Meeting, Witherspoon Parlor
- 7:30 p.m. Career Counseling, Conference Room

Wednesday, February 8, 2012

- 9:30 a.m. DanceFit, Gym
- 9:30 a.m. Sr. Mens' Discussion Group, Converse House
- 10:00 a.m. PW Coffee Cup Bible Study, Gloucester Room
- 2:00 p.m. Planning Team Meeting, Conference Room
- 4:00 p.m. Carol Choir, Fine Arts Center
- 4:00 p.m. Jubilate Ringers, Fine Arts Center
- 5:00 p.m. Beginners Choir, Fine Arts Center
- 5:00 p.m. St. Andrew Boy Choir, Fine Arts Center
- 5:00 p.m. St. Cecilia Girl Choir, Fine Arts Center
- 5:00 p.m. Weekly Wednesday Dinner, Congregational Hall
- 5:00 p.m. Youth Dinner Fellowship, Congregational Hall
- 6:00 p.m. Tintinnabulators, Fine Arts Center

- 6:50 p.m. Tutoring Program, Ed. Bldg.
- 7:00 p.m. Forward in Faith Training, Witherspoon Parlor
- 7:00 p.m. Youth Chorale, Fine Arts Center
- 7:00 p.m. Adult Ed. Council, Fullerton Room
- 8:00 p.m. High School Leadership Bible Study, Pastors Conference Room

Thursday, February 9, 2012

- 7:30 a.m. Forward in Faith Committee, Pastors Conference Room
- 8:30 a.m. Thursday Morning Prayer Group, Chapel
- 9:00 a.m. Repose Yoga, Gym
- 11:00 a.m. Torah Study, Main Line Reform Temple
- 7:00 p.m. Senior Choir, Fine Arts Center
- 8:30 p.m. Bryn Mawr Chamber Singers, Fine Arts Center

Friday, February 10, 2012

- 9:30 a.m. DanceFit, Gym
- 9:30 a.m. Singing for Life, Fine Arts Center
- 6:00 p.m. Family Fun Friday, Congregational Hall, Gym

Saturday, February 11, 2012

- 7:00 a.m. Saturday Morning Men's Group, Converse House
- 10:00 a.m. Searching for Still Waters (Bereavement Group), Middleton Center
- 11:00 a.m. Ada Mutch Memorial Service and Reception
- 11:30 a.m. Youth Leave for Ski Trip to Shawnee Mountain, Poconos (meet at the Shipley School Parking Lot)

Sunday, February 12, 2012

- 8:00 a.m. *Worship with Communion in the Chapel*
The Rev. Louisa Watkins Umphres will preach.
- 10:00 a.m. *Worship with Senior Choir in the Sanctuary.*
The Rev. Dr. James Carter will preach.

Childcare for infants and toddlers, Ed. Bldg., Room 102, 7:45-11:15 a.m.

- 8:30 a.m. Adult Class: Book Discussion, Conference Room
- 9:00 a.m. Sunday Choir School, Fine Arts Center
- 9:00 a.m. Art @ 9 for age 3 and older, Ed. Bldg., Room 201
- 10:00 a.m. BLINK: Grades K-5 begin worship with families in Sanctuary
- 10:00 a.m. Church School for children age 2 (by 9/1/2011) - PreK, Ed. Bldg.
- 10:00 a.m. Confirmation, Middle & High School Meet-up, Gym
- 10:15 a.m. Confirmation Class, Witherspoon Parlor
- 10:15 a.m. Middle and High School Sunday School, Loft
- 10:15 a.m. Grades K-5 classes meet in Ed. Bldg.
- 11:15 a.m. Adult Class: Understanding Occupy Philadelphia, Conference Room
- 11:15 a.m. Forward in Faith Training, Gloucester Room
- 11:15 a.m. Be Your Own Medical Advocate, Witherspoon Parlor
- 11:30 a.m. Children's & Family Ministries Council Meeting, Ed. Bldg., Room 205
- 2:00 p.m. Young Artists Concert, Sanctuary
- 4:00 p.m. Youth Ski Trip Pick-up, Back Parking Lot
- 5:00 p.m. Officer Training, Gloucester Room, Witherspoon Parlor

CHILDCARE INFO/RESERVATIONS other than on Sunday morning, contact childcare e-mail: childcare@bmpc.org or childcare line: 610-520-8850. Nursery care with electronic pagers is available in our Education Building.

WEDNESDAY NIGHT DINNERS. Wednesdays, 5:00-6:30 p.m., Congregational Hall. Dinner menus available at www.bmpc.org/wedsdinners.htm. Cost: \$6/person. Contact: JacquiVanVliet@bmpc.org, ext. 8810.

BMPC CAMPUS TOURS. Feb. 19 & Mar. 4, 11:15 a.m., starting in Converse House. Join members of the Property Committee to tour campus improvements being made as part of the Forward in Faith capital campaign. Contact: CarolMPyle@aol.com

The Book Center and Library

FINDING OUR SACRED CENTER: A JOURNEY TO INNER PEACE by Henri Nouwen, \$10. A small journal is bound to touch our restless and searching hearts. Available at The Book Center, open following services and on weekdays from 9:00 a.m.-4:30 p.m. Key available at the Reception Desk.

Sunday Adult Education

THE WISDOM JESUS BOOK DISCUSSION. Sundays, 8:30 a.m., Conference Room, led by the Rev. Dr. Paul MacMurray. Put aside what you think you know about Jesus and approach the Gospels as though for the first time.

OUR STORIES, MUSLIM STORIES, AND GOD'S STORY. Today, 11:15 a.m., Witherspoon Parlor. Led by Dr. Jon Pahl. This week: *Stories Abounding* or *The Forty Rules of Love*.

UNDERSTANDING "OCCUPY PHILADELPHIA." Sun., Feb. 12, 11:15 a.m., Conference Room. Learn about "Occupy Philadelphia" from two people who have been deeply involved: Gregory Harris, a Ph.D. student in Sociology at the Univ. of Pennsylvania, and Hollister Knowlton, an environmental/ecological activist and member of the Policy Committee of the Friends Committee on National Legislation. Contact: PhoebSheftel@comcast.net, 610-526-1802.

Adult Weekday Classes

PREACHER'S BROWN BAG BIBLE STUDY. Tuesdays, noon, Conference Room. Bring your lunch and discuss the sermon text with the preaching pastor for the following Sunday.

WOMEN'S COFFEE CUP BIBLE STUDY. Wednesdays, 10:00 a.m., Gloucester Room.

Led by the Rev. Louisa Watkins Umphres. Discuss *Getting Involved with God: Rediscovering the Old Testament* by Ellen F. Davis. Sponsored by Presbyterian Women (PW). Book available in The Book Center.

TORAH (OLD TESTAMENT) STUDY OF AMOS. Thursdays, 11:00 a.m., led by Rabbi Franzel, Main Line Reform Temple, Wynnewood. BMPC contact: PhoebSheftel@comcast.net, 610-526-1802.

LENTEN SERIES. Wednesdays, Feb. 29-March 21, 7:00 p.m., Witherspoon Parlor. Led by the Revs. Charles Grant, Sherri Hausser, Kellen Smith and Jacqui Van Vliet. Spend time with the pastors exploring the Biblical stories that relate to Lent.

Congregational Care

HOSPITAL INFORMATION. Due to current privacy laws, it is more difficult for the pastors to know when our members have been admitted to a hospital. Call BMPC if you or any one you know is hospitalized, and let us know if and when you volunteer at any local hospitals.

DEACONS BLOOD DRIVE. Thanks to all who came out on Jan. 30 to make this year's blood drive a success! Not only were 79 total donations collected--helping 237 area patients--but it was our best blood drive since 2008!

WALKING GROUP. Wednesdays, 9:00 a.m.; meet in BMPC back parking lot. Contact: LorieBenovic@bmpc.org, ext. 8833.

REPOSE YOGA. Tuesdays and Thursdays, 9:00-10:30 a.m., Gym. Donations accepted for Hunger Fund. Contact: kcgagnier@verizon.net, 610-520-2595.

BE YOUR OWN MEDICAL ADVOCATE. Sun., Feb. 12, 11:15 a.m., Witherspoon Parlor. Peace of Mind Advocates, LLC, will present a program on becoming your own informed healthcare advocate and answer questions about living wills, second opinions, DNRs and more. Contact: LorieBenovic@bmpc.org, ext. 8833.

Middleton Center

For information about support groups, events, counseling services, spiritual

direction or the following events, contact the Rev. Joyce Krajian at 610-525-0766 or mail@middletoncenter.org

PARENTING ON THE MAIN LINE: SELF IMAGE/SELF KNOWLEDGE. Tues., Feb. 7, 7:00 p.m., Main Line Reform Temple. Panel of presenters will cover multiple aspects of children's images of themselves and how they come to know who they are. Free and open to the public. More information: www.parentingonthemainline.com

WALKING THE LABYRINTH IN PRAYER. Tues., Feb. 7, 11:00 a.m.-8:00 p.m., Congregational Hall. Join others in this ancient symbol and prayer form. February theme: Testimony. Quiet music will play; printed prayer reflections will be available.

SEARCHING FOR STILL WATERS: AN EXPLORATION OF LOSS AND GRIEF. Sat., Feb. 11, 10:00-11:30 a.m., Middleton Center. This ongoing support group is for those coping with the loss of a loved one, whether recent or many years ago. Led by David Reed and Mary Joan Walheim. No cost. New and previous group members welcome.

Senior Adults

SENIORS CLUB LUNCH. Wed., Feb. 15, 12:00 noon, Congregational Hall. Arthur L. Yeager, DMD, MMH will talk about DNA, stem cells and the future of medicine. Bring a bag lunch; coffee and sweets provided. All welcome. Contact: AmyBauer@bmpc.org, ext. 8821.

Young Adults

COFFEE AND CONVERSATION. Thurs., Feb. 16, 7:00 p.m. Join us every other Thursday at Panera in Wayne to chat Bible, theology, and life in general. No prep, no pressure... just show up! Contact: LouisaUmphres@bmpc.org, ext. 8828.

Children & Family Ministries

ART @ 9. Sundays, 9:00-9:50 a.m., Rm. 201, Ed. Bldg, for children ages 3 and older. Nurture, fellowship and craft/creative time for children whose parents are attending BMPC classes.

BLINK: BMPC (love + inspire + nurture) Kids. To welcome children into our faith community and embrace them on their spiritual journeys, we invite children K-5 to

begin worship with their families at the 10:00 a.m. service, Sanctuary.

FAMILY FUN FRIDAY. Fri., Feb. 10, 6:00-8:00 pm, Congregational Hall. Pizza and salad supper followed by the children's classic movie, *Peter Pan*. Children are invited to come in pajamas and bring pillows and stuffed animals. RSVP by Feb. 9: WhitneyHoffman@yahoo.com

VACATION BIBLE CAMP 2012: SAVE THE DATE! Sun., June 24-Thurs., June 28. Join us for *Babylon: Daniel's Courage in Captivity*. Watch for our mailing to arrive in late February. For more information or to volunteer, contact Marcy Del Orefice, marcydelorefice@aol.com

Youth Ministries, Grades 6-12

MIDDLE AND HIGH SCHOOL SUNDAY SCHOOL AND CONFIRMATION CLASS. Today, 10:00 a.m. Meet Pastor Kellen Smith in the Gym, then Middle and High School will move to the Loft, and Confirmation to Witherspoon Parlor. Contact: KellenSmith@bmpc.org, ext. 8822.

YOUTH SUMMER TRIP REGISTRATION FORMS for Camp Kirkwood, High School Mission Trip to the Adirondack Mountains, and Middle School "Urban Plunge" in Philadelphia are available online: www.bmpc.org/youth/summer/2012.Summer%20Registration.pdf

YOUTH-IN-WORSHIP. Sun., Feb. 19. Youth will worship together in the left balcony of the Sanctuary or with their families.

Fine Arts

ART EXHIBIT. Opening today, the Conference Room and Witherspoon Parlor will display photographs taken by travelers on the Senior Choir's recent trip to the South.

REFLECTIONS OF TIME. Own a copy of BMPC's new 48-minute documentary film. Standard DVD is \$20; Blu-ray is \$25. To purchase, contact Ginny Smith: vafs3201@gmail.com, 610-645-4819.

YOUNG ARTISTS CONCERT. Sun., Feb. 12, 2:00 p.m., Sanctuary. Featuring talented children and teens from the community in collaboration with Nelly Berman School of Music. Free-will offering. Contact: StephanieSpeakman@bmpc.org, ext. 8836.

VISIT FROM CIVIL RIGHTS LEADER GWEN APPLING. Events include: Sun., Feb. 19, 11:15 a.m., Congregational Hall, open screening of *The Children's March*; Sat., Feb. 25, 9:30 a.m., Congregational Hall, second screening of *The Children's March* and interaction with Gwen for children, youth and their families; Sun., Feb. 26, 11:15 a.m., Witherspoon Parlor, discussion with Gwen about *The Children's March* and how to make a difference in people's lives; and Sun., Feb. 26, 12:00 p.m., Congregational Hall, soul-food luncheon followed by a 2:00 p.m. Civil Rights Movement concert in the Sanctuary. Tickets for the luncheon must be purchased in advance (\$10 for adults, \$5 for children 18 and under). Contact StephanieSpeakman@bmpc.org to purchase. The concert is free to the public and an offering will be received.

Presbyterian Women (PW)

PW sponsors programs at BMPC open to all women. Contact: Pam Haynes Walsh, Haynes-walsh@comcast.net, 610-667-0972.

CARING AND CRAFTS. Mon., Feb. 20, 9:15 a.m., Gloucester Room. Create afghans, hats and scarves for Presbyterian Children's Village. Contact: MaryaliceStoltzfus, 610-527-3909.

DIMENSIONS IN LITERATURE. Tues., Feb. 21, 9:30 a.m., Converse House. Read *What's Bred in the Bones* by Robertson Davies for discussion led by Suzanne DuPlantis. Contact: Eric Johnson, johnsone@cpenow.com, 610-525-2821. Book available in The Book Center.

WOMEN'S ANNUAL RETREAT: THEIR STORY, OUR STORY. Fri., Feb. 24, 6:00 p.m., potluck dinner and discussion at the manse of the Rev. Jacqui Van Vliet; Sat., Feb. 25, 9:00 a.m. at BMPC. Led by the Revs. Louisa Watkins Umphres, Jacqui Van Vliet and Joanne Fong. Reservations: CarolSchmidt@bmpc.org, ext. 8819.

PERSPECTIVES IN MUSIC. Mon., Feb. 27, 1:30 p.m., Fine Arts Center. Program of vocal classics with mezzo soprano Suzanne DePlantis and pianist Laura Ward. Contact: DeAnn Clancy, deannclancy@hotmail.com, 610-525-8347.

Y-Group

Y-Group is a PW group principally for women with elementary school-aged and younger

children but all women are welcome. Contact: JenniferHuth@comcast.net

Y-GROUP & BOOK GROUP JOINT MEETING. Tues., Feb. 14, 9:15 a.m., Witherspoon Parlor. Topic: Awakening a Child's Easter Imagination: Retelling the story of *The Velveteen Rabbit*; led by the Rev. Joanne Fong. Childcare available; reserve three days in advance: childcare@bmpc.org, 610-520-8850.

Worldwide Ministries

BORDERLINKS. This bi-national mission partner offers experiential seminars along the Mexican-American border focusing on the issues of global economics, militarization, immigration, and resistance to oppression and violence. For more info: www.borderlinks.org. Your pledge helps to support its work!

Outreach

THOMAS S. STEWART, long-time BMPC member, Elder and Trustee, has been selected to receive posthumously the first "Dare to Understand" award from the Interfaith Center of Greater Philadelphia on March 5 at Moore College of Art & Design. Interested in being part of a BMPC group? Contact: SherriHausser@bmpc.org, ext. 8818.

West Philadelphia

URBAN SUBURBAN BOOK GROUP. Tues., Feb. 21, 7:00 p.m., Wynnefield Pres. Church, 2249 N. 54th St., Philadelphia. Discuss: *City of Thieves* by Ellen Renner. Contact: Sherry Archer, sherry.archer19@yahoo.com

Hunger Committee

JOIN THE HUNGER COMMITTEE. This dedicated and enthusiastic group believes that every person has a right to adequate food, obtained with dignity. Next meeting: Thurs., Feb. 23, 7:00 p.m., Conference Room. Info: Dave Hastings, dast99@yahoo.com, 610-325-3456.

HUNGER FACT. 30% of food-insecure households skip meals, reduce portions or otherwise forgo food, while 70% choose cheaper, less nutritious options.