

Bryn Mawr Presbyterian Church

SUNDAY, SEPTEMBER 25, 2011

8:00 AM, SANCTUARY

TWENTY-SIXTH SUNDAY IN ORDINARY TIME



Jesus Teaching in the Temple
Julius Schnorr von Karolsfeld, 1794-1872

“When he entered the temple, the chief priests and the elders of the people came to him as he was teaching, and said, ‘By what authority are you doing these things, and who gave you this authority?’”

Matthew 21:23

Order of Worship

GATHERING AROUND THE WORD

As we gather for worship, we encourage you to spend time in prayer and reflection.

PRELUDE

WELCOME

Sherri Hausser

(Please fill in the Fellowship Register at the end of your pew.)

CALL TO WORSHIP

Christ Be With Me

Joseph Browne



Christ be with me, Christ with-in me, Christ be-hind me, Christ be-fore me,
Christ be-neath me, Christ a-bove me, Christ in qui-et, Christ in dan-ger.



Christ be-side me, Christ to win me, Christ, to com-fort and re-store me,
Christ in hearts of all that love me, Christ in mouth of friend and stran-ger.

CALL TO CONFESSION

Sherri Hausser

PRAYER OF CONFESSION *(in unison)*

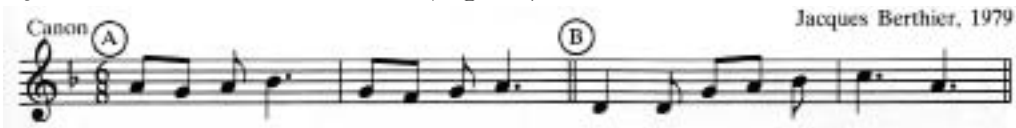
God of compassion, have mercy upon us as we make our confession.
How often we do not do what we intended! What we confess is not how we act. We hear your word preached and we give our assent, but faith is found wanting when it comes time to obey. We are confronted by conflict; decisions are called for. Our desires are at odds with what you command and we do not do what you wish. O God, have mercy upon us and in Christ forgive us. Give us the strength to do your will.

(A moment of silence for personal reflection and confession.)

ASSURANCE OF PARDON

Sherri Hausser

† CONGREGATIONAL RESPONSE *(sing twice)*



Glo-ri-a, glo-ri-a, in ex-cel-sis De-o!



Glo-ri-a, glo-ri-a, al-le-lu-ia, al-le-lu-ia!

HEARING THE WORD

We approach God's Word prayerfully, trusting that as Scripture is read and proclaimed, our hearts and minds will be opened to transformation and inspiration by the Holy Spirit.

PRAYER FOR ILLUMINATION

Cindy Stewart

FIRST READING

Ezekiel 18:1-4, 25-32 *(p. 784 in pew Bible)*

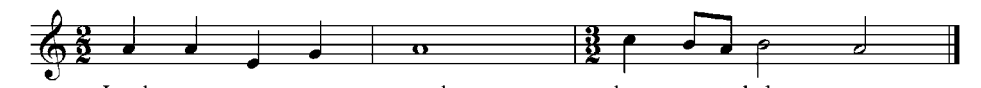
Cindy Stewart

PSALTER

Psalm 25:1-10

arr. Hal Hopson

All Sing at the Cantor's Cue:



Lord, you are my strength; has-ten to help me.

SECOND READING

Matthew 21:23-32 *(p. 23 in pew Bible)*

James L. Carter

One: The Word of the Lord. All: **Thanks be to God.**

SERMON

Living the Story

James L. Carter

RESPONDING TO THE WORD

We respond to God's word with thanksgiving and prayer.

As we come forward to celebrate communion, we are invited to place offerings of prayer cards and monetary gifts in the plates located at the front of the Sanctuary.

† HYMN 339

Be Thou My Vision

SLANE

SACRAMENT OF THE LORD'S SUPPER

Sherri Hausser

THE INVITATION TO COMMUNION AND THE GREAT THANKSGIVING

One: The Lord be with you.

All: **And also with you.**

One: Lift up your hearts.

All: **We lift them to the Lord.**

One: Let us give thanks to the Lord our God.

All: **It is right to give our thanks and praise.**

THE LORD'S PRAYER *(in unison)*

Our Father who art in heaven, hallowed be thy name; thy kingdom come; thy will be done, on earth as it is in heaven. Give us this day our daily bread. And forgive us our trespasses, as we forgive those who trespass against us. And lead us not into temptation, but deliver us from evil. For thine is the kingdom and the power and the glory forever. Amen.

THE COMMUNION

You are invited to come forward, using the center aisle, to partake of the Lord's Supper. Please break off a piece of bread, dip it in the cup and return to your seat, using the side aisle. If you prefer gluten- and casein-free bread, please partake from the center table. If you desire to be served in your seat, please raise your hand to alert an usher.

MUSIC AT COMMUNION

PRAYERS OF THE PEOPLE

Sherri Hausser

MINISTRY MOMENT

Bryan Miller on behalf of Peacemaking

† HYMN 442

The Church's One F

DOWN AMPNEY

† SENDING AND PASSING OF THE PEACE

James L. Carter

One: The peace of Christ be with you. All: **And also with you.**

POSTLUDE

† *Please stand, if able.*

❖ Worship Notes ❖

Exploring the Story

The Reverend Dr. James L. Carter

Each year at the church, one of our councils selects a theme for us to keep in mind as we develop worship, activities and programs. This theme has influence on much that we say and do during the year and helps us focus our efforts around a common idea. This year we will be emphasizing *Exploring the Story*. As you can imagine, this is an emphasis with many possibilities. For example, there is the biblical story that is ours to share -- the Gospel of God's judgment, love and redemption of us all. There is our church's story of ministry in the past, present and future in this place, Bryn Mawr. And there is the personal story of growth and change and discovery that each of us can tell.

I encourage you to let this theme guide your personal journey of faith over the next twelve months. You will need imagination, discipline, a forgiving spirit, humor and much love to make your effort work to your benefit and to the benefit of the whole church. You will want to review the mighty acts of God in the stories of the people of God. You will want to recall some of these acts as you visit with friends and teachers. You will find yourself acknowledging how, providentially, God has been a part of your life at critical times. And you will discover that the stories never grow old but continue to disclose new dimensions of God's activity among us.

So, have fun with this theme this year and let it help you appreciate again how grateful we are for those who have shared stories of God's engagement in their lives. Ours is "no idle tale;" it is God's truth and God's story of the salvation of the world. That includes every one of us.



"I am the resurrection and the life."

Virginia F. Vogel ~ September 19, 2011

Esther Ann McFarland ~ September 20, 2011



We invite you to share your gifts and talents in leading worship during the 8:00 a.m. service. You may serve in a variety of ways, from welcoming others as an usher, reading prayers or scripture, serving communion, to providing special music or sharing other artistic gifts.

If you are interested in ushering, contact Phoebe Sheftel, pasheftel@comcast.net or 610-526-1802.

If you are an elder or deacon interested in serving communion, contact Joanne Hanna, joannehanna3@comcast.net or 610-356-9796.

If you would like to participate in other ways or explore how you might participate, contact Louisa Watkins Umphres, louisaumphres@bmpc.org or 610-525-2821, ext. 8828.



Deacon Cindy Stewart is assisting with communion.



The schedule calls for our 8:00 a.m. Worship to return to the Chapel in late October.



Bryn Mawr Presbyterian Church Clergy and Staff

MINISTERS

All the members of the church

PASTORAL STAFF

The Rev. James L. Carter, D.Min.; Interim Pastor, Head of Staff

The Rev. R. Charles Grant, D.Min.; Associate Pastor for Senior Adults and Pastoral Care

The Rev. Sherri A. Hausser, M.Div.; Associate Pastor for Adult Education, Outreach, and Worldwide Ministries

The Rev. Kellen A. Smith, M.Div.; Associate Pastor for Youth, Their Families and College Ministries

Jacqui Van Vliet, M.Div.; Director of Congregational Life

The Rev. Joanne Shum Fong, M.Div.; Pastoral Resident 2010-12

The Rev. Louisa Watkins Umphres, M.Div.; Pastoral Resident 2010-12

PROGRAM AND ADMINISTRATIVE STAFF

Rebecca Alleva, Acting Youth Activities Director

Donna Barrickman, Membership Director

Carolyn Jervis Beitmann, Director of Children's Ministries

Lorie Benovic, Care Manager

Jeffrey L. Brillhart, Director of Music and Fine Arts

Patsy Cole, Director of the Weekday School

Pete DiRocco, Director of Facilities and Maintenance

Marie-Claire Higgins, Parish Nurse

The Rev. Joyce R. Krajian, M.Div.; Director of the Middleton Center

Pam Lloyd, Executive Assistant to the Senior Pastor

Ketti Jane Muschler, Director of BMPC Choir School

Joanne Solarz, Executive Director of Operations

David Van Houten, Ph.D.; Transition into Ministry Program Director

Jane Wilber, Assistant Director of Children's Ministries



The Rev. Robert C. Murphy, M.Div.; Parish Associate

Sue Gibbons, Shared Ministries Coordinator



The Rev. Eugene C. Bay, D.Min.; Pastor Emeritus

The Rev. Margaret Anne Fohl, D.Min.; Associate Pastor Emerita

The Rev. George E. Hollingshead, Jr., D.Min.; Associate Pastor Emeritus

The Rev. David B. Watermulder, Th.M., DD.; Pastor Emeritus

625 Montgomery Avenue
Bryn Mawr, PA 19010
Office Phone: 610-525-2821
Office Fax: 610-525-9476
Website: www.bmpc.org



Main Line Adult Day Center: 610-527-4220
The Middleton Center: 610-525-0766; mail@middletoncenter.org
The Weekday School: 610-525-2821, ext. 8840

Bryn Mawr Presbyterian Church

SUNDAY, SEPTEMBER 25, 2011

10:00 AM, SANCTUARY

TWENTY-SIXTH SUNDAY IN ORDINARY TIME



Jesus Teaching in the Temple
Julius Schnorr von Karolsfeld, 1794-1872

“When he entered the temple, the chief priests and the elders of the people came to him as he was teaching, and said, ‘By what authority are you doing these things, and who gave you this authority?’ ”

Matthew 21:23

Order of Worship

As we gather for worship, some prepare by greeting each other with words of peace, others with meditation and prayer. Please be respectful of how those around you prepare. Kindly refrain from taking photos or videos and please silence cell phones.

(See *Worship Notes* section for text.)

GATHERING OF GOD’S PEOPLE

PRELUDE Prelude and Fugue in C Major J.S. Bach

WELCOME Louisa Watkins Umphres

CALL TO WORSHIP Jacqui Van Vliet

One: Give ear, O my people, to my teaching;
incline your ears to the words of my mouth.

All: **We will tell to the coming generation the glorious deeds
of the Lord and the wonders that God has done.**

One: How in the daytime the Lord led them with a cloud,
and all night long with a fiery light.

All: **He split rocks open in the wilderness,
and gave them drink abundantly as from the deep.**

One: Let us drink deeply of the Lord’s goodness
as we come into God’s courts with praise! Psalm 78:1-4, 12-16

† **HYMN 442** The Church’s One Foundation AURELIA

PRAYER OF CONFESSION (*in unison*) Louisa Watkins Umphres

God of compassion, have mercy upon us as we make our confession. How often we do not do what we intended! What we confess is not how we act. We hear your word preached and we give our assent, but faith is found wanting when it comes time to obey. We are confronted by conflict; decisions are called for, but not made. Our desires are at odds with what you command and we do not do what you wish. O God, have mercy upon us and in Christ forgive us. Give us the strength to do your will.

(A moment of silence for personal reflection and confession.)

ASSURANCE OF PARDON Louisa Watkins Umphres

† **GLORIA PATRI** (*in unison*) (*Hymnal 579*)

Glory be to the Father and to the Son and to the Holy Ghost; as it was in the beginning, is now and ever shall be, world without end. Amen, Amen.

(Children are invited to come forward for the Children’s Moment.)

PROCLAMATION OF THE WORD

CHILDREN’S MOMENT Jacqui Van Vliet

SENDING HYMN Go now, Children, with our Blessing
(See *Worship Notes* section for Sending Hymn.)

FIRST LESSON Louisa Watkins Umphres
Ezekiel 18:1-4, 25-32 (*p. 784 in pew Bible*)

ANTHEM Rejoice in the Lord Alway anon.

SECOND LESSON Matthew 21:23-32 (*p. 23 in pew Bible*) James L. Carter

SERMON *Living the Story* James L. Carter

† **HYMN 275** God of Our Life SANDON

(Please remain standing for the Affirmation of Faith.)

RESPONSE TO THE WORD

† **AFFIRMATION OF FAITH** (*in unison*) R. Charles Grant

I believe in God the Father Almighty, Maker of heaven and earth, and in Jesus Christ his only Son our Lord; who was conceived by the Holy Ghost, born of the Virgin Mary, suffered under Pontius Pilate, was crucified, dead, and buried; he descended into hell; the third day he rose again from the dead; he ascended into heaven, and sitteth on the right hand of God the Father Almighty; from thence he shall come to judge the quick and the dead. I believe in the Holy Ghost; the holy catholic church; the communion of saints; the forgiveness of sins; the resurrection of the body; and the life everlasting. Amen.

~ *The Apostles’ Creed*

(Please fill in the Fellowship Register at the end of your pew; pass it down your row and back again.)

OFFERTORY AND MINISTRY MOMENT R. Charles Grant

Bryan Miller on behalf of Peacemaking

OFFERTORY ANTHEM Pilgrim’s Hymn Stephen Paulus

(See *Worship Notes* section for text.)

† **DOXOLOGY** (*in unison*) (*Hymnal 592*)

Praise God, from whom all blessings flow; praise God, all creatures here below; praise God above, ye heavenly host; praise Father, Son, and Holy Ghost. Amen.

PRAYERS OF THE PEOPLE R. Charles Grant

AND THE LORD’S PRAYER (*in unison*)

Our Father who art in heaven, hallowed be thy name; thy kingdom come; thy will be done, on earth as it is in heaven. Give us this day our daily bread. And forgive us our trespasses, as we forgive those who trespass against us. And lead us not into temptation, but deliver us from evil. For thine is the kingdom, and the power, and the glory forever. Amen.

† **HYMN 339** Be Thou My Vision SLANE

BENEDICTION AND CHORAL RESPONSE James L. Carter

POSTLUDE Toccata in F J.S. Bach

† *Please stand, if able.*

❖ Worship Notes ❖

Go now, Children, with our Blessing

Go now, children with our blessing, to love and serve the Lord. May God
 Bless you, May God guard you, May the light of God shine upon you, and may
 God be gracious to you. May the presence of God be with you. May the
 presence of God be with you, and give you peace.

ANTHEM Rejoice in the Lord Always anon.
 Rejoice in the Lord always, and again I say, rejoice. Let your softness be known unto all men: the Lord is even at hand. Be careful for nothing; but in all prayer and supplication let your petitions be manifest unto God with giving of thanks. And the peace of God which passeth all understanding keep your hearts and minds through Christ Jesu. Amen.

OFFERTORY ANTHEM Pilgrim's Hymn Stephen Paulus
 Even before we call on Your name to ask You, O God, when we seek for the words to glorify You, You hear our prayer. O unceasing love, surpassing all we know. Glory to the Father, and to the Son, and to the Holy Spirit. Even with darkness sealing us in, we breathe Your name, and through all the days that follow so fast, we trust in You; O endless Your grace, beyond all mortal dream. Both now and forever, and unto ages and ages. Amen.

Exploring the Story

The Reverend Dr. James L. Carter

Each year at the church, one of our councils selects a theme for us to keep in mind as we develop worship, activities and programs. This theme has influence on much that we say and do during the year and helps us focus our efforts around a common idea. This year we will be emphasizing *Exploring the Story*. As you can imagine, this is an emphasis with many possibilities. For example, there is the biblical story that is ours to share -- the Gospel of God's judgment, love and redemption of us all. There is our church's story of ministry in the past, present and future in this place, Bryn Mawr. And there is the personal story of growth and change and discovery that each of us can tell.

I encourage you to let this theme guide your personal journey of faith over the next twelve months. You will need imagination, discipline, a forgiving spirit, humor and much love to make your effort work to your benefit and to the benefit of the whole church. You will want to review the mighty acts of God in the stories of the people of God. You will want to recall some of these acts as you visit with friends and teachers. You will find yourself acknowledging how, providentially, God has been a part of your life at critical times. And you will discover that the stories never grow old but continue to disclose new dimensions of God's activity among us.

So, have fun with this theme this year and let it help you appreciate again how grateful we are for those who have shared stories of God's engagement in their lives. Ours is "no idle tale;" it is God's truth and God's story of the salvation of the world. That includes every one of us.



"I am the resurrection and the life."

Virginia F. Vogel ~ September 19, 2011

Esther Ann McFarland ~ September 20, 2011

The flowers in the Sanctuary are given to the glory of God and in loving memory of
 Grafton D. Chase
 Pat Lockhart Culbertson
 Elizabeth C. Erb and Harry C. Erb
 Louella and Melville Kennedy
 Richard W. Knecht
 Emilie M. Pyle
 Charles Iredell Tenney

Dianne Heard will play the carillon following the service.

Due to HVAC construction, parking in back is limited. Those who are able to walk across the street comfortably are encouraged to park in the Harcum College lot.

Our 8:00 a.m. Sunday Worship is in the Sanctuary. The schedule calls for the service to return to the Chapel in late October.

There is an opening for Sanctuary flowers on October 16, 2011.

If you are interested in this opportunity, please call Ruth Miller Cox at (610) 446-1595.

Hearing devices are available for your use. You will find them in a black case on the shelf in the Narthex. Take an instruction card to learn the simple steps to turn on the device and plug in the earpiece. Large print resources are available for you at the same location.

Bryn Mawr Presbyterian Church Clergy and Staff

MINISTERS

All the members of the church

PASTORAL STAFF

The Rev. James L. Carter, D.Min.; Interim Pastor, Head of Staff

The Rev. R. Charles Grant, D.Min.; Associate Pastor for Senior Adults and Pastoral Care

The Rev. Sherri A. Hausser, M.Div.; Associate Pastor for Adult Education, Outreach, and Worldwide Ministries

The Rev. Kellen A. Smith, M.Div.; Associate Pastor for Youth, Their Families and College Ministries

Jacqui Van Vliet, M.Div.; Director of Congregational Life

The Rev. Joanne Shum Fong, M.Div.; Pastoral Resident 2010-12

The Rev. Louisa Watkins Umphres, M.Div.; Pastoral Resident 2010-12

PROGRAM AND ADMINISTRATIVE STAFF

Rebecca Alleva, Acting Youth Activities Director

Donna Barrickman, Membership Director

Carolyn Jervis Beitmann, Director of Children's Ministries

Lorie Benovic, Care Manager

Jeffrey L. Brillhart, Director of Music and Fine Arts

Patsy Cole, Director of the Weekday School

Pete DiRocco, Director of Facilities and Maintenance

Marie-Claire Higgins, Parish Nurse

The Rev. Joyce R. Krajian, M.Div.; Director of the Middleton Center

Pam Lloyd, Executive Assistant to the Senior Pastor

Ketti Jane Muschler, Director of BMPC Choir School

Joanne Solarz, Executive Director of Operations

David Van Houten, Ph.D.; Transition into Ministry Program Director

Jane Wilber, Assistant Director of Children's Ministries

The Rev. Robert C. Murphy, M.Div.; Parish Associate

Sue Gibbons, Shared Ministries Coordinator

The Rev. Eugene C. Bay, D.Min.; Pastor Emeritus

The Rev. Margaret Anne Fohl, D.Min.; Associate Pastor Emerita

The Rev. George E. Hollingshead, Jr., D.Min.; Associate Pastor Emeritus

The Rev. David B. Watermulder, Th.M., DD.; Pastor Emeritus

625 Montgomery Avenue, Bryn Mawr, PA 19010

Office Phone: 610-525-2821

Office Fax: 610-525-9476

Website: www.bmpc.org

Main Line Adult Day Center: 610-527-4220

The Middleton Center: 610-525-0766; mail@middletoncenter.org

The Weekday School: 610-525-2821, ext. 8840

WEEKLY CALENDAR: September 25 - October 2, 2011

Sunday, September 25, 2011

- 8:00 a.m. *Worship with Communion* in the Sanctuary
The Rev. Dr. James L. Carter will preach.
- 10:00 a.m. *Worship with Senior Choir* in the Sanctuary
The Rev. Dr. James L. Carter will preach.

Childcare for infants and toddlers, **Ed Bldg, Room 102**, 7:45 - 11:15 a.m.

- 8:30 a.m. Adult Class: The Case for God Book Discussion, Conference Room
- 9:00 a.m. Adult Class: Spiritual Autobiographies, Converse House Meeting Room
- 9:00 a.m. Art @ 9 for age 3 and older, Ed Bldg, Room 201
- 10:00 a.m. BLINK: Grades K-5 begin worship with families in Sanctuary
- 10:00 a.m. Church School for children 2 (by 9.1.2011) - PreK, Ed Bldg
- 10:00 a.m. Middle School Sunday School, Ed Bldg, Room 205
- 10:00 a.m. High School Sunday School, Ed Bldg, Room 204
- 10:15 a.m. Grades K-5th classes meet in the Ed Bldg
- 11:15 a.m. BMPC Block Party, throughout the Campus
- 4:00 p.m. Youth Group, Congregational Hall
- 6:00 p.m. Parenting on the Main Line: Ken Ginsburg, Keynote Speaker, Sanctuary

Monday, September 26, 2011

- 9:00 a.m. Tai Chi, Middleton Center
- 1:30 p.m. PW Perspectives in Music, Congregational Hall
- 7:00 p.m. Nominating Committee, Pastors Conference Room
- 7:30 p.m. Recovery International, Converse House Porch & Library
- 7:30 p.m. PNC, Ed Bldg Conference Room

Tuesday, September 27, 2011

- 9:30 a.m. Y Group Book Group, Converse House Porch & Library
- 12:00 p.m. Preacher's Brown Bag Bible Study, Conference Room
- 12:45 p.m. PW Great Decisions, Rosemont Presbyterian Village Ballroom
- 1:30 p.m. Parkinson's Disease Support Group, Converse House Meeting Room
- 6:50 p.m. Tutoring, Ed Bldg
- 7:00 p.m. Senior Adult Council, Converse House Porch & Library
- 7:30 p.m. Career Counseling, Conference Room

Wednesday, September 28, 2011

- 9:30 a.m. Sr. Mens Discussion Group, Converse House Porch & Library
- 10:00 a.m. PW Coffee Cup Bible Study, Converse House Meeting Room
- 4:00 p.m. Carol Choir, Ed Bldg 202
- 4:00 p.m. Jubilate Ringers, Sanctuary
- 5:00 p.m. Beginners Choir, Ed Bldg, 202
- 5:00 p.m. St. Andrew Boy Choir, Sanctuary
- 5:00 p.m. St. Cecilia Girl Choir, Converse House Meeting Room
- 5:00 p.m. Weekly Wednesday Dinner, Congregational Hall
- 5:30 p.m. Youth Bible Study, Congregational Hall
- 6:30 p.m. Youth Chorale, Sanctuary
- 7:00 p.m. Worship Committee, Conference Room
- 7:30 p.m. Tintinnabulators, Sanctuary

Thursday, September 29, 2011

- 7:30 a.m. Major Gifts Meeting, Pastors Conference Room
- 8:30 a.m. Thursday Morning Prayer Group, Converse House Porch & Library
- 11:00 a.m. Torah Study, Main Line Reform Temple
- 5:00 p.m. Middleton Center, Converse House Porch & Library
- 7:00 p.m. Senior Choir, Congregational Hall

Friday, September 30, 2011

- 8:00 p.m. AA Meeting, Conference Room

Saturday, October 1, 2011

- 7:00 a.m. Saturday Morning Men's Group, Converse House Porch & Library
- 9:20 a.m. Congregation Wide Day of Service, Congregational Hall & off site
- 9:30 a.m. Hunger Committee Casserole Blitz, Main Kitchen
- 6:00 p.m. Sacred Shelter Open House & Spaghetti Dinner, Congregational Hall

Sunday, October 2, 2011

- 8:00 a.m. *Worship with Communion* in the Sanctuary
The Rev. Joanne Fong will preach.
- 10:00 a.m. *Worship with Communion and Senior Choir* in the Sanctuary
The Rev. Dr. James L. Carter will preach.

Childcare for infants and toddlers, **Ed Bldg, Room 102**, 7:45 - 11:15 a.m.

- 8:30 a.m. Adult Class: *The Case for God* Book Discussion, Conference Room
- 9:00 a.m. Art @ 9 for age 3 and older, Room 201
- 9:00 a.m. Adult Class: Spiritual Autobiographies, Converse House Meeting Room
- 10:00 a.m. BLINK: Grades K-5 begin worship with families in Sanctuary
- 10:00 a.m. Church School for children 2 (by 9.1.2011) - PreK, Ed Bldg
- 10:00 a.m. Middle School Sunday School, Congregational Hall
- 10:00 a.m. High School Sunday School, Congregational Hall
- 10:15 a.m. Grades 3-5 remain in worship the entire hour.
- 10:15 a.m. Grades K-2 classes meet in the Education Building
- 11:00 a.m. Visiting Stewards Training, Converse House Meeting Room
- 11:15 a.m. Adult Class: What's New about the Old Bible Stories, Conference Room
- 4:00 p.m. Youth Group, Congregational Hall

CHILDCARE INFO/RESERVATIONS other than on Sunday morning, contact childcare e-mail: childcare@bmpc.org or childcare line: 610-520-8850.

Bryn Mawr Presbyterian Church | 625 Montgomery Avenue, Bryn Mawr, PA 19010
Phone: 610-525-2821 | Fax: 610-525-9476 | Website: www.bmpc.org

Bryn Mawr Presbyterian Church



Our Common Life

The Week of September 25 - October 2, 2011

WELCOME TO BMPC! We are glad that you have chosen to be here for worship where we listen for the contemporary relevance of God's Word and pray for the illuminating power of the Holy Spirit. We hope you will join us often in the coming weeks as we focus on our theme for the year, "Exploring the Story" of our Christian faith.

Questions? Visit our Welcome Center near the main doors or ask an usher or anyone wearing a nametag. Nursery care with electronic pagers is available in our Education Building. After 10:00 a.m. worship, please join us for our festive Block Party on the Lawn (weather permitting) or in the Ministries Center.

Looking for a church home or just curious to know more about us? Plan to attend our membership orientation on Sunday, October 23, 8:30 a.m. – 1:00 p.m. To register or for childcare information, contact DonnaBarrickman@bmpc.org or 610-525-2821 x8809. After attending orientation, those who are interested in joining our church may do so on Sunday morning, October 30.

BMPC ON-LINE: Check our website, www.bmpc.org, for our church calendar, pastors' blogs, sermon files, newsletters, and more. To receive our electronic newsletter, BMPC ENews, subscribe via our homepage or add your e-mail address to the fellowship register when it is passed. To learn more about the Presbyterian Church (USA), visit www.pcusa.org.

TODAY

BMPC BLOCK PARTY.

11:00 a.m. – 1:00 p.m. Folk music by John Flynn; face painting; balloon artist; food by Pig Daddy's; premieres of *BMPC: Reflections of Time* documentary and *Children & Youth: Life and Hope for the Church* video; 100th Anniversary tours of Converse House & more! Join us on the Lawn (weather permitting) or in the Ministries Center.

YOUTH GROUP

4:00 – 5:00 p.m., Congregational Hall. We will **gather** to have fun with games, watch videos, and enjoy skits.

PARENTING ON THE MAIN LINE: KICK OFF SPEAKER, DR. KEN GINSBURG.

6:00 – 8:00 p.m. Sanctuary. Ken Ginsburg, author and specialist in adolescent medicine at The Children's Hospital of Philadelphia will speak about stresses placed on teenagers in today's society. Dr. Ginsburg aims to equip parents and educators with skills to help children help themselves. No charge.

CHURCH NEWS

THE NOMINATING COMMITTEE FOR ELDERS, DEACONS AND TRUSTEES asks for your assistance in giving prayerful consideration to the nomination of those individuals you feel have demonstrated leadership and a commitment to the life and ministry of BMPC. Nominating forms are available in the Narthex, the Court of the Ministries Center, and the Education Building. You also may submit nominations online, www.bmpc.org. If submitting nominations online, please indicate the position for which you are nominating the individual(s) in the comments section as well as checking the appropriate box(es). Deadline for nominations is today.

Learning and Connecting

The Book Center and Library

IN THE NAME OF JESUS: REFLECTIONS ON CHRISTIAN LEADERSHIP by Henri J.M. Nouwen. \$10. The Book Center offers a variety of Nouwen books and this one has a heartwarming message. The Book Center is open following services, and weekdays, 9:00 a.m. - 4:30 p.m. The key is available at the Reception Desk.

Sunday Adult Education Classes

For info: CarolSchmidt@bmpc.org or 610-525-2821, ext. 8819.

THE CASE FOR GOD BY KAREN ARMSTRONG. Sundays, 8:30 a.m., Conference Room. Led by the Rev. Paul MacMurray. Discussion of Part II, 1500 CE to the present. Explore the history of religious practices in different cultures.

SPIRITUAL AUTOBIOGRAPHIES. Sundays, 9:00 a.m., Converse House Meeting Room. Led by the Rev. Sherri Hausser. Explore excerpts from spiritual writings of the past while writing and sharing our own spiritual autobiographies.

WHEN THE WALLS COME TUMBLING DOWN. Sundays, Oct. 9-23, 9:00 a.m. Middleton Center. Book discussion with author Muriel Ricker focuses on the effects of divorce on children and how to respond.

WHAT'S NEW ABOUT THE OLD BIBLE STORIES. Begins Oct. 2, 11:15 a.m., Conference Room. Led by Dr. Erik Heen of Lutheran Theological Seminary. Discussions of Gospel stories we learned as children and what they tell us today.

LIFE-CHANGING MEDICAL MISSION PRESENTATION by Shaull recipient, Faith in Practice. Sunday, Oct. 16, 11:15 a.m., Converse House Meeting Room. Rev. Linda L. McCarty, Chief Executive Officer of Faith in Practice, will give an update on the work of this mission partner located in Guatemala.

Adult Weekday Classes

PREACHER'S BROWN BAG BIBLE STUDY. Tuesdays, noon, Conference Room. Bring your lunch and meet with the preaching pastor for the upcoming Sunday to discuss the Bible text for the sermon.

WOMEN'S COFFEE CUP BIBLE STUDY. Wednesdays., 10:00 a.m. See info under Presbyterian Women.

TORAH (OLD TESTAMENT) STUDY OF HOSEA. Thursdays, 11:00 a.m., led by Rabbi Franzel, Main Line Reform Temple, Wynnewood. Phoebe Sheftel, pasheftel@comcast.net or 610-526-1802.

Middleton Center

For information about support groups, special events, counseling services or spiritual direction, contact the Rev. Joyce Krajian, 610-525-0766, mail@middltoncenter.org, or visit our website: middletoncenter.org. Calls are confidential, scholarships available.

TAI CHI DROP-IN CLASSES. Mondays, 9:00 a.m., Middleton Center, Room 201. This 90-minute moving meditation complements all styles of exercise. Benefits include stress reduction, arthritis management, and balance and coordination enhancement. \$15 per class. 610-525-0766.

WALKING THE LABYRINTH IN PRAYER. Tues., Oct. 4, 11:00 – 8:00 p.m., Congregational Hall. Join others in this ancient symbol and prayer form. Quiet music will play and a printed prayer reflection will be available.

PARENTING ON THE MAIN LINE: POSITIVE PARENTING. Tues., Oct. 11, 7:00 p.m., Main Line Reform Temple. As part of an ongoing series to support parents and provide dialog, the Middleton Center and Main Line Reform Temple are collaborating on a parenting series. Ruthy Kaiser, RN, LMFT will be speaking on *Positive Parenting*. Join other parents who want to talk about what it takes to raise healthy, well-adjusted, ethically-grounded children on the Main Line. Free and open to the public. For more information visit www.parentingonthemainline.com

Congregational Care

REPOSE YOGA. Tues. and Thurs., Church of the Redeemer Parish House Assembly Room, 9:00-10:15 a.m. Donations accepted for hunger fund. kcgagnier@verizon.net or 610-520-2595.

Congregational Life

WEEKLY WEDNESDAY DINNERS. Join us on Wednesdays, 5:00 – 6:30 p.m. in Congregational Hall. Gather with people of all ages for food and fellowship. Featuring a different menu each week. LydiaBarrett@bmpc.org, x8811

Fine Arts

SINGING FOR LIFE. Are you 55 or older, love to sing and have a desire to enrich your community life? Singing for Life begins Fri., Oct. 7, 9:30 a.m. Registration: \$60 per semester; scholarships available. StephanieSpeakman@bmpc.org, or 610-525-2821 ext. 8836.

THE SENIOR CHOIR is seeking new members... a great opportunity for recent college grads to become involved in worship. Contact StephanieSpeakman@bmpc.org to set up a vocal interview.

FALL REGISTRATION FOR CHOIRS. Our Fine Arts Program has offerings for children and youth of all ages. Visit our website for details: www.bmpcfinearts.org. To register: StephanieSpeakman@bmpc.org, or 610-525-2821, ext. 8836.

Youth Ministries, Grades 6-12

BIBLE STUDY: Wednesdays, 5:30 – 6:30 p.m., Congregational Hall. We give our time in a relaxed setting to become servant leaders through scripture. We will discuss the message of the week over dinner and talk about how we can live it out. A special focus will be put on how we can connect the scriptures with service to others.

WOULD YOU LIKE TO RECEIVE THE YOUTH ENEWS? Sign up by emailing amybauer@bmpc.org and begin receiving news updates, pictures and more!

Children & Family Ministries

FOR MORE INFORMATION on Children's & Family Ministries programs: CarolynBeitmann@BMPC.org, or JaneWilber@BMPC.org

ART @ 9. Sundays, 9:00 – 9:50 a.m., Rm. 201, Ed. Bldg, for children ages 3 and older. Nurture, fellowship and craft/creative time for children whose parents are attending BMPC classes.

BLINK: BMPC (love + inspire + nurture) Kids. To welcome children into our faith community and embrace them on their spiritual journeys, we invite children K-5 to begin worship with their families at the 10:00 a.m. service, Sanctuary.

SACRED SHELTER OPEN HOUSE AND SPAGHETTI DINNER. Sat., Oct. 1, 6:00 – 8:00 p.m., Congregational Hall. Join us for a meal and learn about Sacred Shelter, a covenant group of parents who meet to determine ways their families can act as shelters for the sake of the world God loves. Michele Whipple, WhippleM@mlhs.org

Young Adults

COFFEE AND CONVERSATION. Join us every other Thursday at Saxby's to chat Bible, theology, and life in general. Starts Sept. 29, 7:00 p.m. No preparation, no pressure. Just show up! louisaumphres@bmpc.org

Y Group

A PW group principally for women with elementary school-aged and younger children, but all women are welcome.

CHILDCARE AVAILABLE FOR ALL EVENTS AT THE CHURCH. Reserve three days in advance: childcare@bmpc.org or 610-520-8850.

Y-GROUP MEETING. Tues., Oct. 11, 9:15 a.m., Congregational Hall. Jen Finkelstein, coauthor of *Real Women Talking Now*, will share research about how women create balance for themselves and their families. Jen Huth JenniferHuth@verizon.com

Y-GROUP BOOK GROUP. Tues., Sept. 27, 9:30 a.m., Converse House Porch. Discussion of *Cutting for Stone* by Abraham Verghese.

Caring and Sharing

Y Group (Con't)

FAMILY HAYRIDE. Sun., Oct. 9, 5:00 p.m., Sugartown Strawberries, Malvern, PA. Bring the whole family for hayride and bonfire. After the hayride we'll roast marshmallows and hot dogs (all provided.) \$10/person or \$40/family. candacebalch@comcast.net

Presbyterian Women (PW)

COFFEE CUP BIBLE STUDY. Every Wed., 10:00 a.m., Converse House Meeting Room. Led by the Rev. Louisa Watkins Umphres. Continuing study of *Mark for Everyone* by N.T. Wright.

PERSPECTIVES IN MUSIC. Mon., Sept. 26, 1:30 p.m., Congregational Hall, beginning with refreshments and fellowship. The first guest of a 3-part piano mini-festival is Dr. William Carr, Prof. of Music at Immaculata University, playing his classical favorites.

GREAT DECISIONS. Tues., Sept. 27, Rosemont Presbyterian Village Auditorium; 12:45 p.m. video, 1:15 p.m. discussion of "The Caucasus." With rich energy resources, strong national identities, and powerful neighbors, how do these countries relate to the outside world?

PW HORIZONS BIBLE STUDY. Wed., Oct. 5, 10:30 a.m., Rosemont Presbyterian Village Ballroom. Led by the Rev. Charles Grant. This year's study is "Confessing the Beatitudes." Study book available from Joyce Malott, okf405@erols.com or 610-525-4469.

DIMENSIONS IN LITERATURE. Tues., Oct. 18, 9:30 a.m., Converse House Parlor. Led by Joan Lynch, author of *Women of the Passion*. An examination of the resurrection of Christ through the women who knew him best. Eric Johnson: johnsone@cpenow.com or 610 668-4844.

West Philadelphia

URBAN SUBURBAN BOOK GROUP Tues., Oct. 18, 7:00 p.m., Wynnefield Presbyterian Church, 2249 N. 54th St., Philadelphia. Discussion of *The Zookeeper's Wife* by Diane Ackerman. sherry.archer19@yahoo.com

Worldwide Ministries

MISSION TRIP NOV. 2-6: Join us as we visit with our mission partner Appalachian Ministries Educational Resource Center (AMERC) and learn about the complex problems facing the people of Appalachia. Total cost (travel, lodging, most meals) \$800-\$900. Info Session Wed., Sept. 28; register by Oct. 3. LouisaUmphres@bmpc.org

Hunger Committee

HUNGER ENVELOPES. Your contributions in the white hunger envelopes in the pews provide food for emergency food cupboards, homeless shelters, and hunger relief organizations.

WORLD FOOD DAY COLLECTION. Sun., Oct. 16, 9:20 – 11:00 a.m., Sanctuary doors. Hunger Committee members will collect canned and nonperishable food items to deliver to area food cupboards and homeless shelters. Needed: protein sources such as canned tuna fish, beans, stews, meats, baby food and baby formula.

HUNGER FACT. Supermarkets and businesses selling fresh food produce are absent in many of the poorest neighborhoods in the city. These areas are referred to as food deserts.

CASSEROLE BLITZ. Sat., Oct. 1, 9:30 – 11:30 a.m., Main Kitchen. Join us in the Congregation-wide Day of Service, making nutritious casseroles for Philadelphia food cupboards.

Outreach

CONGREGATION-WIDE DAY OF SERVICE. Sat., Oct. 1. Our May Day of Service saw 85 volunteers gardening, doing home repairs, casserole prep and food center assistance. Can we break that record? Plan to attend with your family and friends. CarolSchmidt@bmpc.org

The BMPC Tutoring Program has an urgent need for three adult group leaders, Tuesdays, 6:40-8:00 p.m. to supervise the teen tutors and their 3rd or 4th grade buddies from North Philadelphia School. The program begins in late September. Sandra or Kyle Stephens, BMPCTutoring@gmail.com or 610-945-5864.