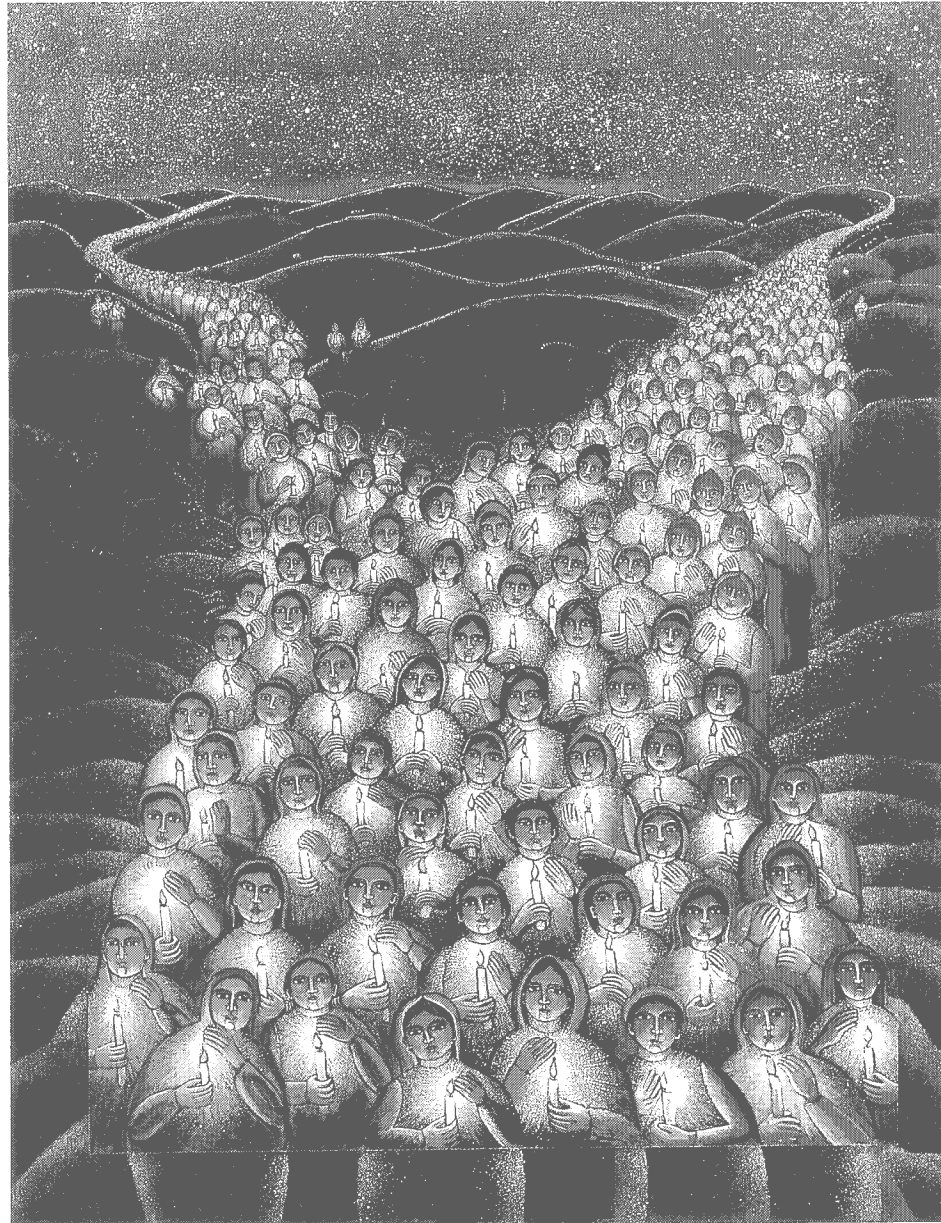


Bryn Mawr Presbyterian Church

SUNDAY, NOVEMBER 13, 2011

8:00 AM, SANCTUARY

TWENTY-SECOND SUNDAY AFTER PENTECOST



John August Swanson, Festival of Lights

“...for you are all children of light and children of the day...”

~ 1 Thessalonians 5:5a

Order of Worship

GATHERING AROUND THE WORD

As we gather for worship, we encourage you to spend time in prayer and reflection.

PRELUDE

WELCOME

Louisa Watkins Umphres

(Please fill in the Fellowship Register at the end of your pew.)

CALL TO WORSHIP

Christ Be With Me

Joseph Browne



Christ be with me, Christ with - in me, Christ be - hind me Christ - be - fore me,
Christ be - neath me, Christ a - bove me, Christ in qui - et, Christ - in dan - ger.



Christ be - side me, Christ to win me, Christ, to com - fort and re - store me.
Christ in hearts of all that love me, Christ in mouth of friend and stran - ger.

CALL TO CONFESSION

Louisa Watkins Umphres

PRAYER OF CONFESSION *(in unison)*

Louisa Watkins Umphres

Holy God, again we must confess our struggles to be faithful disciples. Entrusted with all your gifts, we become fearful once again of misusing them, missing the chance to be a blessing to others. Invited to dance in the light of your love, we stand against the wall once again, keeping company with our old friend, sin. Called to be emptied for those who struggle in life, we fill ourselves once again with scorn for the poor choices they make. Merciful God, have mercy on us. Open our eyes to your kingdom in our midst, so we might discover that your day of hope and grace has already come in Jesus Christ, our Lord and Savior.

(A moment of silence for personal reflection and confession.)

ASSURANCE OF PARDON

Louisa Watkins Umphres

† CONGREGATIONAL RESPONSE *(sing twice)*



Glo - ri - a, glo - ri - a, in ex - cel - sis De - o!



Glo - ri - a, glo - ri - a, al - le - lu - ia, al - le - lu - ia!

HEARING THE WORD

We approach God's Word prayerfully, trusting that as Scripture is read and proclaimed, our hearts and minds will be opened to transformation and inspiration by the Holy Spirit.

PRAYER FOR ILLUMINATION

Linda Griska

FIRST LESSON

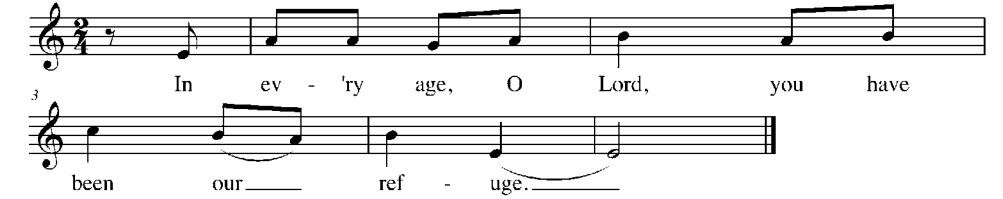
Matthew 25:14-30 (p. 28 in pew Bible)

Linda Griska

PSALTER

Psalm 90

At the cantors' cue, all sing:



SECOND LESSON

1 Thessalonians 5:1-11 (p. 205 in pew Bible)

Joanne Fong

One: The Word of the Lord. All: **Thanks be to God.**

SERMON

Live in Expectation

Joanne Fong

RESPONDING TO THE WORD

We respond to God's word with thanksgiving and prayer.

As we come forward to celebrate communion, we are invited to place offerings of prayer cards and monetary gifts in the baskets located at the front of the Sanctuary.

Your Pledge Cards also may be left in the baskets

† HYMN 428

We Give Thee but Thine Own

SCHUMANN

SACRAMENT OF THE LORD'S SUPPER

Louisa Watkins Umphres

THE INVITATION TO COMMUNION AND THE GREAT THANKSGIVING

One: The Lord be with you.

All: **And also with you.**

One: Lift up your hearts.

All: **We lift them to the Lord.**

One: Let us give thanks to the Lord our God.

All: **It is right to give our thanks and praise.**

THE LORD'S PRAYER *(in unison)*

Our Father who art in heaven, hallowed be thy name; thy kingdom come; thy will be done, on earth as it is in heaven. Give us this day our daily bread. And forgive us our trespasses, as we forgive those who trespass against us. And lead us not into temptation, but deliver us from evil. For thine is the kingdom and the power and the glory forever. Amen.

THE COMMUNION

You are invited to come forward, using the center aisle, to partake of the Lord's Supper. Please break off a piece of bread, dip it in the cup and return to your seat, using the side aisle. If you prefer gluten- and casein-free bread, please partake from the center table. If you desire to be served in your seat, please raise your hand to alert an usher.

MUSIC AT COMMUNION

PRAYERS OF THE PEOPLE

Joanne Fong

† HYMN 210

Our God, Our Help in Ages Past

ST. ANNE

† SENDING AND PASSING OF THE PEACE

Joanne Fong

One: The peace of Christ be with you. All: **And also with you.**

POSTLUDE

† *Please stand, if able.*

❖ Worship Notes ❖

What God Requires...

Most of these students were born and raised in poor barrios and had become active pastoral agents in the process of liberation. They knew their own people and had learned to think with one eye on the gospel and one eye on the painful reality they shared with these people. They worked in their various districts and countries as catechists, social workers, or project coordinators. The way in which these young Christians spoke about their Lord was so direct and fearless that it became clear that their pastoral work among the poor was not based on any mere idea or theory but on a deep, personal experience of the presence of a loving God in the midst of the struggle for justice and peace. There was joy and gratitude; there was warm friendship and generosity; there was humility and mutual care, and these gifts were received from the Lord who had called them to be his witnesses among a suffering people.

~ Henri Nouwen



"I am the resurrection and the life."

Margery Guenthoer ~ November 4, 2011

We invite you to share your gifts and talents in leading worship during the 8:00 a.m. service. You may serve in a variety of ways, from welcoming others as an usher, reading prayers or scripture, serving communion, to providing special music or sharing other artistic gifts.

If you are interested in ushering, contact Phoebe Sheftel, pasheftel@comcast.net or 610-526-1802.

If you are an elder or deacon interested in serving communion, please contact Bill Matthai at William.Matthai@uphs.upenn.edu or 610-668-1842 or Anita Iyengar at aniiye@comcast.net or 610-645-6044.



If you would like to participate in other ways or explore how you might participate, contact Louisa Watkins Umphres, louisaumphres@bmpc.org or 610-525-2821, ext. 8828.



Elder Linda Griska is assisting with communion.



The schedule calls for our 8:00 a.m. worship service to return to the Chapel soon.



Bryn Mawr Presbyterian Church Clergy and Staff

MINISTERS

All the members of the church

PASTORAL STAFF

The Rev. James L. Carter, D.Min.; Interim Pastor, Head of Staff

The Rev. R. Charles Grant, D.Min.; Associate Pastor for Senior Adults and Pastoral Care

The Rev. Sherri A. Hausser, M.Div.; Associate Pastor for Adult Education, Outreach, and Worldwide Ministries

The Rev. Kellen A. Smith, M.Div.; Associate Pastor for Youth, Their Families and College Ministries

The Rev. Jacqui Van Vliet, M.Div.; Pastoral Associate for Congregational Life and Family Ministries

The Rev. Joanne Shum Fong, M.Div.; Pastoral Resident 2010-12

The Rev. Louisa Watkins Umphres, M.Div.; Pastoral Resident 2010-12

PROGRAM AND ADMINISTRATIVE STAFF

Rebecca Alleva, Acting Youth Activities Director

Donna Barrickman, Director of Communications and Membership

Carolyn Jervis Beitmann, Director of Children's and Family Ministries

Lorie Benovic, Care Manager

Jeffrey L. Brillhart, Director of Music and Fine Arts

Patsy Cole, Director of the Weekday School

Pete DiRocco, Director of Facilities and Maintenance

Marie-Claire Higgins, Parish Nurse

The Rev. Joyce R. Krajian, M.Div.; Director of the Middleton Center

Pam Lloyd, Executive Assistant to the Senior Pastor

Ketti Jane Muschler, Director of BMPC Choir School

Joanne Solarz, Executive Director of Operations

David Van Houten, Ph.D.; Transition into Ministry Program Director

Jane Wilber, Assistant Director of Children's and Family Ministries



The Rev. Robert C. Murphy, M.Div.; Parish Associate

Sue Gibbons, Shared Ministries Coordinator



The Rev. Eugene C. Bay, D.Min.; Pastor Emeritus

The Rev. Margaret Anne Fohl, D.Min.; Associate Pastor Emerita

The Rev. George E. Hollingshead, Jr., D.Min.; Associate Pastor Emeritus

The Rev. David B. Watermulder, Th.M., DD.; Pastor Emeritus

625 Montgomery Avenue, Bryn Mawr, PA 19010

Office Phone: 610-525-2821

Office Fax: 610-525-9476

Website: www.bmpc.org



Main Line Adult Day Center: 610-527-4220

The Middleton Center: 610-525-0766; mail@middletoncenter.org

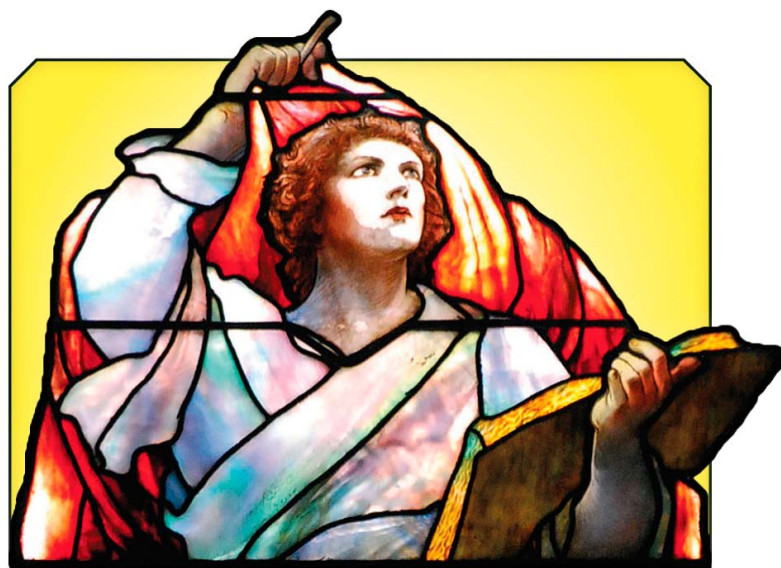
The Weekday School: 610-525-2821, ext. 8840

Bryn Mawr Presbyterian Church

SUNDAY, NOVEMBER 13, 2011

10:00 AM, SANCTUARY

TWENTY-SECOND SUNDAY AFTER PENTECOST



STEWARDSHIP STORIES

WHY WE GIVE

“Do not neglect to do good and to share what you have, for such sacrifices are pleasing to God”

~ Hebrews 13:16

Order of Worship

As we gather for worship, some prepare by greeting each other with words of peace, others with meditation and prayer. Please be respectful of how those around you prepare. Kindly refrain from taking photos or videos and please silence cell phones.

GATHERING OF GOD'S PEOPLE

PRELUDE Scherzo Maurice Durufé

WELCOME Jacqui Van Vliet

CALL TO WORSHIP R. Charles Grant

One: As we speak of your goodness, O God, our hearts are glad.

All: **We come before you with praise and thanksgiving.**

One: Your loving kindness envelops us in every crisis,

and moves us to share your love with others.

All: **Turn our acts of kindness and generosity into sacrifices that are pleasing in your sight.**

One: Let us worship God.

† **HYMN 425** Lord of Light, Your Name Outshining ABBOT'S LEIGH

CALL TO CONFESSION AND

PRAYER OF CONFESSION (*in unison*) R. Charles Grant

O God, have mercy upon us as we confess our sin. Christ calls us stewards, but we squander your gifts. He gives us tasks to perform, yet we do as we please. He sends us to minister on behalf of those suffering, but we are slow to respond until our own needs are met. He expects us to praise you in all that we do; we take all the credit for those things we do well. Forgive us and help us to be more generous and grateful stewards.

(A moment of silence for personal reflection and confession.)

ASSURANCE OF PARDON R. Charles Grant

† **GLORIA PATRI** (*in unison*) (*Hymnal 579*)

Glory be to the Father and to the Son and to the Holy Ghost; as it was in the beginning, is now and ever shall be, world without end. Amen, Amen.

(Children are invited to come forward for the Children's Moment.)

PROCLAMATION OF THE WORD

CHILDREN'S MOMENT Jacqui Van Vliet

SENDING HYMN Go now, Children, with our Blessing
(See *Worship Notes* section for Sending Hymn.)

FIRST LESSON Psalm 90:1-8 (*p. 547 in pew Bible*) R. Charles Grant

ANTHEM Keep Your Lamps Trimmed and Burning arr. André Thomas
(See *Worship Notes* section for text.)

SECOND LESSON Matthew 25:14-30 (*p. 28 in pew Bible*) James L. Carter

SERMON *Proceed and Be Bold* James L. Carter

† **HYMN 428** We Give Thee but Thine Own SCHUMANN
(Please be remain standing for the Affirmation of Faith.)

RESPONSE TO THE WORD

† **AFFIRMATION OF FAITH** (*in unison*) Jacqui Van Vliet

We trust in God the Holy Spirit,
everywhere the giver and renewer of life.

The Spirit justifies us by grace through faith,
sets us free to accept ourselves and to love God and neighbor,
and binds us together with all believers
in the only body of Christ, the Church.

The same Spirit who inspired the prophets and apostles
rules our faith and life in Christ through Scripture,
engages us through the Word proclaimed,
claims us in the waters of baptism,
feeds us with the bread of life and the cup of salvation,
and calls women and men to all ministries of the Church.

In a broken and fearful world the Spirit gives us courage
to pray without ceasing,
to witness among all peoples to Christ as Lord and Savior,
to unmask idolatries in Church and culture,
to hear the voices of people long silenced,
and to work with others for justice, freedom, and peace.

In gratitude to God, empowered by the Spirit,
we strive to serve Christ in our daily tasks
and to live holy and joyful lives,
even as we watch for God's new heaven and new earth,
praying, "Come, Lord Jesus!"

~ from A Brief Statement of Faith

(Please fill in the Fellowship Register at the end of your pew; pass it down your row and back again.)

OFFERING AND DEDICATION OF PLEDGES Jacqui Van Vliet

(Pledge Cards may be placed in the offering plates at this time.)

OFFERTORY ANTHEM Great Day arr. Moses Hogan

(See *Worship Notes* section for text.)

† **DOXOLOGY** (*in unison*) (*Hymnal 592*)

Praise God, from whom all blessings flow; praise God, all creatures here below;
praise God above, ye heavenly host; praise Father, Son, and Holy Ghost. Amen.

MINISTRY MOMENT Susan Mease on behalf of Advent Gift Market

PRAYERS OF THE PEOPLE R. Charles Grant

AND THE LORD'S PRAYER (*in unison*)

Our Father who art in heaven, hallowed be thy name; thy kingdom come;
thy will be done, on earth as it is in heaven. Give us this day our daily
bread. And forgive us our trespasses, as we forgive those who trespass
against us. And lead us not into temptation, but deliver us from evil. For
thine is the kingdom, and the power, and the glory forever. Amen.

† **HYMN 210** Our God, Our Help in Ages Past ST. ANNE

BENEDICTION AND CHORAL RESPONSE James L. Carter

POSTLUDE Transports de joie Olivier Messiaen

† Please stand, if able.

❖ Worship Notes ❖

Go now, Children, with our Blessing

Go now, children with our blessing, to love and serve the Lord. May God
 Bless you. May God guard you, May the light of God shine upon you, and may
 God be gracious to you. May the presence of God be with you. May the
 pre-sence of God be with you, and give you peace.

ANTHEM Keep Your Lamps Trimmed and Burning arr. André Thomas
 Keep your lamps trimmed and burning, the time is drawing nigh. Children
 don't get weary 'til your work is done. Christian journey soon be over, the
 time is drawing nigh. Keep your lamps trimmed and burning, the time is
 drawing nigh.



OFFERTORY ANTHEM Great Day arr. Moses Hogan
 Great Day, the righteous marching; God's gonna build up Zion's wall.
 Chariot moved on the mountaintop, brother. My God spoke and the
 chariot stopped, sister. This is the year of Jubilee, brother. My God set his
 people free, sister.



This morning we welcome Stephen Buzard to the organ bench (Mr. Brillhart
 is at the Eastman School of Music this weekend, presenting two concerts and
 teaching classes in organ improvisation). Mr. Buzard graduated summa cum laude
 from Westminster Choir College in 2010, studying organ performance with Ken
 Cowan. While at Westminster, he served as organ scholar at Trinity Episcopal
 Church, Princeton, and as director of music for the Episcopal Church at Princeton
 University. Having spent the last year in England as senior organ scholar at Wells
 Cathedral, he currently is pursuing a Master of Music degree at Yale University
 where he studies with Tom Murray and Jeffrey Brillhart. Welcome, Stephen!



†
"I am the resurrection and the life."
 Margery Guenthoer ~ November 4, 2011

The flowers in the Sanctuary are given to the glory of God
 and in loving memory of
 Esther M. and Herbert P. Stellwagen



Alan Willoughby will play the carillon following the service.



Due to HVAC construction, parking in back is limited.
 Those who are able to walk across the street comfortably
 are encouraged to park in the Harcum College lot.



Our 8:00 a.m. Sunday Worship remains in the Sanctuary.
 The schedule calls for the service
 to return to the Chapel soon.



Hearing devices are available for your use. You will find them in a black
 case on the shelf in the Narthex. Take an instruction card to learn the simple
 steps to turn on the device and plug in the earpiece. Large print resources
 are available for you at the same location.

Bryn Mawr Presbyterian Church Clergy and Staff

MINISTERS

All the members of the church

PASTORAL STAFF

The Rev. James L. Carter, D.Min.; Interim Pastor, Head of Staff

The Rev. R. Charles Grant, D.Min.; Associate Pastor

for Senior Adults and Pastoral Care

The Rev. Sherri A. Hausser, M.Div.; Associate Pastor for Adult Education,
 Outreach, and Worldwide Ministries

The Rev. Kellen A. Smith, M.Div.; Associate Pastor for Youth, Their Families
 and College Ministries

The Rev. Jacqui Van Vliet, M.Div.; Pastoral Associate
 for Congregational Life and Family Ministries

The Rev. Joanne Shum Fong, M.Div.; Pastoral Resident 2010-12

The Rev. Louisa Watkins Umphres, M.Div.; Pastoral Resident 2010-12

PROGRAM AND ADMINISTRATIVE STAFF

Rebecca Alleva, Acting Youth Activities Director

Donna Barrickman, Director of Communications and Membership

Carolyn Jervis Beitmann, Director of Children's and Family Ministries

Lorie Benovic, Care Manager

Jeffrey L. Brillhart, Director of Music and Fine Arts

Patsy Cole, Director of the Weekday School

Pete DiRocco, Director of Facilities and Maintenance

Marie-Claire Higgins, Parish Nurse

The Rev. Joyce R. Krajian, M.Div.; Director of the Middleton Center

Pam Lloyd, Executive Assistant to the Senior Pastor

Ketti Jane Muschler, Director of BMPC Choir School

Joanne Solarz, Executive Director of Operations

David Van Houten, Ph.D.; Transition into Ministry Program Director

Jane Wilber, Assistant Director of Children's and Family Ministries



The Rev. Robert C. Murphy, M.Div.; Parish Associate

Sue Gibbons, Shared Ministries Coordinator



The Rev. Eugene C. Bay, D.Min.; Pastor Emeritus

The Rev. Margaret Anne Fohl, D.Min.; Associate Pastor Emerita

The Rev. George E. Hollingshead, Jr., D.Min.; Associate Pastor Emeritus

The Rev. David B. Watermulder, Th.M., DD.; Pastor Emeritus



625 Montgomery Avenue, Bryn Mawr, PA 19010

Office Phone: 610-525-2821

Office Fax: 610-525-9476

Website: www.bmpc.org



Main Line Adult Day Center: 610-527-4220

The Middleton Center: 610-525-0766; mail@middletoncenter.org

The Weekday School: 610-525-2821, ext. 8840

WEEKLY CALENDAR: November 13 - November 20, 2011

Sunday, November 13, 2011

- 8:00 a.m. *Worship with Communion in the Sanctuary*
The Rev. Joanne Fong will preach.
- 10:00 a.m. *Worship with Senior Choir in the Sanctuary*
The Rev. Dr. James L. Carter will preach.

Childcare for infants and toddlers, **Ed. Bldg., Room 102**, 7:45 - 11:15 a.m.

- 8:30 a.m. Adult Class: *The Case for God*, Conference Room
- 9:00 a.m. Sunday Choir School, Fine Arts Center
- 9:00 a.m. Art @ 9 for age 3 and older, Ed. Bldg., Room 201
- 10:00 a.m. BLINK: Grades K-5 begin worship with families in Sanctuary
- 10:00 a.m. Church School for children age 2 (by 9.1.2011) - PreK, Ed. Bldg.
- 10:00 a.m. Middle School Sunday School, Ed. Bldg., Room 205
- 10:00 a.m. High School Sunday School, Ed. Bldg., Room 204
- 10:15 a.m. Grades K-5 classes meet in Ed. Bldg.
- 11:15 a.m. Kentucky's Appalachia trip presentation, Congregational Hall
- 11:15 a.m. Medicare Seminar, Converse House Meeting Room
- 11:15 a.m. Prime Time Committee Meeting, Converse House Porch & Library
- 4:00 p.m. Youth Group, Congregational Hall

Monday, November 14, 2011

- 9:00 a.m. Tai Chi, Middleton Center
- 7:00 p.m. Nominating Committee, Pastors Conference Room
- 7:00 p.m. Peacemaking Committee, Converse House Porch & Library
- 7:30 p.m. PNC, Converse House Meeting Room
- 7:30 p.m. Recovery International, Conference Room

Tuesday, November 15, 2011

- 8:30 a.m. Tuesday Morning Study Group, Converse House Meeting Room
- 9:15 a.m. Y Group Monthly Meeting, Congregational Hall
- 9:30 a.m. PW Dimensions in Literature, Converse House Porch & Library
- 12:00 p.m. Preacher's Brown Bag Bible Study, Conference Room
- 1:30 p.m. Parkinson's Disease Support Group, Conference Room, Converse House Mtg. Room, Congregational Hall
- 6:50 p.m. Tutoring, Ed. Bldg.
- 7:00 p.m. Youth Ministry Council, Converse House Porch & Library
- 7:00 p.m. Urban Suburban Book Group, Off campus
- 7:30 p.m. Career Counseling, Conference Room

Wednesday, November 16, 2011

- 9:30 a.m. Sr. Men's Discussion Group, Converse House Porch & Library
- 10:00 a.m. PW Coffee Cup Bible Study, Converse House Mtg. Room
- 12:00 p.m. Senior Club Lunch, Congregational Hall
- 4:00 p.m. Carol Choir, Fine Arts Center
- 4:00 p.m. Jubilate Ringers, Fine Arts Center
- 5:00 p.m. Beginners Choir, Fine Arts Center
- 5:00 p.m. St. Andrew Boy Choir, Fine Arts Center
- 5:00 p.m. St. Cecilia Girl Choir, Fine Arts Center
- 5:00 p.m. Weekly Wednesday Dinner, Congregational Hall
- 5:30 p.m. High School Bible Study, Conference Room
- 5:30 p.m. Middle School Bible Study, Congregational Hall
- 6:30 p.m. Youth Chorale, Fine Arts Center

- 6:50 p.m. Tutoring, Ed. Bldg.
- 7:00 p.m. Caregiver Support Group, Converse House Porch & Library
- 7:00 p.m. Trustee Meeting, Conference Room
- 7:30 p.m. Tintinnabulators, Fine Arts Center

Thursday, November 17, 2011

- 7:30 a.m. Major Gifts Meeting, Pastors Conference Room
- 8:30 a.m. Thursday Morning Prayer Group, Jeanne LeBuhn, 610-688-6984
Converse House Porch & Library
- 9:00 a.m. Presbyterian Women Program/Hospitality Coordinators,
Conference Room
- 10:00 a.m. Presbyterian Women Coordinating Team, Conference Room
- 11:00 a.m. Torah Study, Main Line Reform Temple
- 6:00 p.m. Personnel Committee, Pastors Conference Room
- 7:00 p.m. Hunger Committee, Conference Room
- 7:00 p.m. Senior Choir, Fine Arts Center

Friday, November 18, 2011

- 9:30 a.m. Singing for Life, Fine Arts Center
- 6:00 p.m. Family Fun Friday, Congregational Hall
- 6:00 p.m. Presbyterian Women Holy Leisure, Off Campus

Saturday, November 19, 2011

- 7:00 a.m. Saturday Morning Men's Group, Converse House Porch & Library

Sunday, November 20, 2011

- 8:00 a.m. *Worship with Communion in the Sanctuary*
The Rev. Louisa Watkins Umphres will preach.
- 10:00 a.m. *Worship with Senior Choir in the Sanctuary*
The Rev. Louisa Watkins Umphres will preach.

Childcare for infants and toddlers, **Ed. Bldg., Room 102**, 7:45 - 11:15 a.m.

- 8:30 a.m. Adult Class: *The Case for God*, Conference Room
- 9:00 a.m. Sunday Choir School, Fine Arts Center
- 9:00 a.m. Art @ 9 for age 3 and older, Ed. Bldg., Room 201
- 10:00 a.m. BLINK: Grades K-5 begin worship with families in Sanctuary
- 10:00 a.m. Church School for children age 2 (by 9.1.2011) - PreK, Ed. Bldg.
- 10:00 a.m. Middle School Sunday School, Ed. Bldg., Room 205
- 10:00 a.m. High School Sunday School, Ed. Bldg., Room 204
- 10:15 a.m. Grades K-5 classes meet in Ed. Bldg.
- 11:00 a.m. Advent Gift Market, Congregational Hall
- 11:15 a.m. Capital Campaign Property Tours, Converse House Meeting Room
- 2:45 p.m. Walking The Walk, Conference Room
- 4:00 p.m. SWELL: A Contemporary Worship Service, Congregational Hall

CHILDCARE INFO/RESERVATIONS other than on Sunday morning, contact childcare e-mail: childcare@bmpc.org or childcare line: 610-520-8850. Nursery care with electronic pagers is available in our Education Building.

Bryn Mawr Presbyterian Church | 625 Montgomery Avenue, Bryn Mawr, PA 19010
Phone: 610-525-2821 | Fax: 610-525-9476 | Website: www.bmpc.org

Bryn Mawr Presbyterian Church



Our Common Life

The Week of November 13 - November 20, 2011

WELCOME TO BMPC, where we hear the Word, deepen our sense of God's restoring presence, and, through the Spirit, are given the opportunity to respond. We are glad that you have joined us for worship, and we encourage you to participate in any of our activities that might enrich your journey in faith. As followers of Christ, we welcome all!

QUESTIONS OR NEW TO US? Visit our Welcome Center to the left of the main doors.

BMPC ONLINE: Check our website, www.bmpc.org, for our church calendar, pastors' columns, sermon files, newsletters, and more. To receive our electronic newsletter, BMPC ENews, subscribe via our website or add your e-mail address to the fellowship register when it is passed. To learn more about the Presbyterian Church (USA), visit www.pcusa.org.

TODAY

CAFÉ IN THE COURT AT 11:00 A.M. Join us for fellowship, light snacks, and premium roast fair trade coffee and a variety of teas.

KENTUCKY MISSION TRIP PRESENTATION. 11:15 a.m., Congregational Hall. BMPC members and pastors will share their experiences and photos of the mission trip to Appalachia.

MEDICARE QUESTIONS ANSWERED. 11:15 a.m., Converse House Meeting Room. Kim Andrews will present Medicare basics as well as updates for 2012.

GATEWAY TO RELIGIOUS COMMUNITIES. 12:30 – 2:30 p.m., presented by Quba Institute (Islamic Congregation). Visit faith communities in West Philadelphia. Tour with a small group, attend the service, reflect and ask questions.



DID YOU KNOW?

That our campus, one of the most visible signs of our commitment to our local community, does much more than host Sunday worship and house our staff? Here is just a small sample – Christian education classes for children, youth and adults; early childhood education at the Weekday School pre-school; counseling and support at the Middleton Center; temporary living accommodations for the homeless as part of our participation in the Interfaith Hospitality Network; concerts, speeches and seminars open to the public.

Learning and Connecting

THE ADVENT GIFT MARKET (AGM), opening on Sun., Nov. 20, following 11:00 a.m. service, Congregational Hall. Supporting the AGM can draw you closer to the true spirit of Christmas now and throughout the year. Order forms may be downloaded from the church website, www.bmpc.org. To place an advance order or to find out ways to help, contact Mary Bassett, mcbmtb@aol.com or Susan Bravo, b41793@aol.com

SWELL WORSHIP SERVICE. Sun., Nov. 20, 4:00 – 5:00 p.m., Congregational Hall. Join us for a contemporary worship service for all ages with a sermon by the Rev. Kellen Smith and special music from the Youth Chorale. Come as you are to experience the Spirit!

The Book Center and Library

GETTING INVOLVED WITH GOD: REDISCOVERING THE OLD TESTAMENT. By Ellen F. Davis, \$12. The Rev. Louisa Watkins Umphres will be using this book for the PW Coffee Cup Bible Study. The Book Center is open following services and on weekdays 9:00 a.m. - 4:30 p.m. Key available at the Reception Desk.

Sunday Adult Education Classes

For info: CarolSchmidt@bmpc.org or 610-525-2821, ext. 8819.

THE CASE FOR GOD BY KAREN ARMSTRONG. Sundays, 8:30 a.m., Conference Room, led by the Rev. Dr. Paul MacMurray.

IS THIS ALL THERE IS? FINDING THE MORE IN EACH DAY. Dec. 4, 11, 18, 11:15 a.m., Conference Room. Led by Leah Brecher-Cohn, LMFT, MA, MS, sr. staff therapist at Middleton Center. Examine personal issues and explore methods to create more joy and peace in our lives.

Adult Weekday Classes

PREACHER'S BROWN BAG BIBLE STUDY. Tuesdays, noon, Conference Room. Bring your lunch and meet with the preaching pastor for the upcoming Sunday to discuss the sermon text.

TORAH (OLD TESTAMENT) STUDY OF JOEL. Thursdays, 11:00 a.m., led by Rabbi Franzel, Main Line Reform Temple, Wynnewood. BMPC contact: Phoebe

Sheftel, pasheftel@comcast.net or 610-526-1802.

Congregational Care

NEED A RIDE? If you need a ride to an appointment, a church activity or worship, we have church members who are willing to help out. Call Lorie Benovic, 610-520-8833, for more information or if you would like to help out in this ministry.

SEASONAL FLU VACCINE. Sun., Nov. 20, 8:30-11:30 a.m., Ed. Bldg., Room 101, \$25; free with traditional Medicare Part B (your card required). Limited pneumonia vaccine will be offered, \$50. Registration: 610-520-8832.

JOIN THE ENVIRONMENTAL JUSTICE COMMITTEE. Tues., Nov. 22 at 7:00 p.m. in Congregational Hall for an evening exploring climate change as presented by author and environmental activist Richard Whiteford. Info: [Courtenay Willcox, mcwillcox@gmail.com](mailto:CourtenayWillcox@gmail.com)

WALKING GROUP. Meet 9:00 a.m. every Wed. in the back parking lot. Info: MarieHiggins@bmpc.org or 610-520-8832.

Middleton Center

For information about support groups, special events, counseling services or spiritual direction, contact the Rev. Joyce Krajian, 610-525-0766 or middletoncenter.org, or visit our website: middletoncenter.org. Calls are confidential, scholarships available.

TAI CHI DROP-IN CLASSES. Mons., 9:00 a.m., Middleton Center, Room 201. This 90-minute moving meditation complements all styles of exercise. Benefits include stress reduction, arthritis management, and balance and coordination enhancement. \$15 per class. 610-525-0766.

Children & Family Ministries

ART @ 9. Sundays, 9:00 – 9:50 a.m., Rm. 201, Ed. Bldg, for children ages 3 and older. Nurture, fellowship and craft/creative time for children whose parents are attending BMPC classes.

BLINK: BMPC (love + inspire + nurture)

Kids. To welcome children into our faith community and embrace them on their spiritual journeys, we invite children K-5 to begin worship with their families at the 10:00 a.m. service, Sanctuary.

COOKING WITH THE HUNGER COMMITTEE. Six times during the Church School year 2nd graders join Cathy Whiteside and other Hunger Committee members to make casseroles and/or sandwiches as a special class mission project.

FAMILY FUN FRIDAY. Nov. 18, 6:00-8:00 p.m., Congregational Hall. Festive supper followed by the holiday film *The Polar Express*, based on Chris Van Allsburg's book. RSVP by Nov. 17, WhitneyHoffman@yahoo.com or 610-642-1940.

ADVENT CRAFT WORKSHOP AND SUPPER. Sun., Dec. 4, 3:30-6:00 p.m., Ministries Center Court. Fellowship and fun for all ages with festive craft projects. Nominal charge for crafts. [Peggy Hermann@hotmail.com](mailto:PeggyHermann@hotmail.com). Pasta supper follows: free-will offering. RSVP by December 2, [Carolyn Beitmann@bmpc.org](mailto:CarolynBeitmann@bmpc.org), ext. 8812.

Fine Arts

"CHRISTMAS LIGHT" CONCERT. Sun., Dec. 11, 4:00 p.m. Celebrate the season with a festive concert of Christmas favorites sung by the Senior Choir with the Chamber Orchestra of Philadelphia. Organ Scholar, Keenan Boswell, will play a 20 minute recital prior to the concert. Tickets: \$10 for adults; \$5 for children 18 and under. Info: StephanieSpeakman@bmpc.org or 610-525-2821 ext. 8836

Peacemaking Committee

14TH LOWER MERION INTERFAITH CELEBRATION OF THANKSGIVING. Sun., Nov. 20, 4:00 p.m., Adath Israel, Merion Station, with 27 local sponsoring congregations. Enjoy readings, dancing, and singing. Free-will collection benefits ElderNet of Lower Merion & Narberth. Refreshments follow; children welcome.

Young Adults

COFFEE AND CONVERSATION. Join us every other Thursday at Saxby's in Haverford to chat Bible, theology, and life in general. Next up: Dec. 8, 7:00 p.m. No prep, no

pressure. Just show up! louisaumphres@bmpc.org

Senior Adults

PATHWAYS TO LEARNING: Trip to Odessa, DE. Sat., Dec. 3. Christmas in Odessa is a self-guided walking tour of private homes and public buildings, decorated for the holidays. Lunch on your own at Odessa Fire Hall. Mail check for \$45, payable to BMPC/Senior Adults, to BMPC, attn. Amy Bauer. RSVP by Nov. 25. Bus departs 9:00 a.m., back parking lot; returns by 4:00 p.m.

PRIME TIME ADVENT PARTY. (FOR SINGLES AND COUPLES OVER AGE 50) Sun., Dec. 5, 6:00 to 8:00 p.m., home of Bob and Barbara Hauptfuhrer, Wayne. Bring an unwrapped gift for boy or girl, infant to 18 years. \$10/person includes hors d'oeuvres and beverages. RSVP by check (payable to BMPC) to the church office, attn. Amy Bauer, by Thurs., Dec. 1. Upon receipt of check and return address, directions will be mailed.

Youth Ministries, Grades 6-12

ANNUAL THANKSGIVING PANCAKE BREAKFAST. Thurs., Nov. 24, 8:30 - 11:30 a.m., Congregational Hall. \$5 person/\$20 family. Tickets available during Café in the Court TODAY and Sun., Nov. 20. Bring family and friends because if 250 people attend, the youth will give Pastor Kellen a haircut, clipper style! Interested in cooking or serving? Contact: RebeccaAlleva@bmpc.org or 610-525-2821.

SUMMER CAMP AND MISSION TRIPS 2012. Dec. 1 deadline to sign up for summer trips is fast approaching! Return registration form and \$100 deposit for each trip to Rebecca Alleva. Forms and information about trips available online: www.bmpc.org/youth/summer/summer.html

YOUTH SKI TRIP TO SHAWNEE MOUNTAIN. Sat., Feb. 11 – Sun., Feb. 12. Get ready for some fun in the snow when we head to Shawnee Mountain in the Poconos. \$195 includes two days of skiing, lodging, meals, snow tubing, and an optional ski lesson. Deposit (\$75) and registration due by Sun., Nov. 20 to Rebecca.

Caring and Sharing

Presbyterian Women (PW)

BE AN ANGEL. "Angels" are needed to provide holiday gifts for about 100 infants, children and teens served by Presbyterian Children's Village. For names and wish lists contact LaurieKoziol@comcast.net; Betty Wu: efwu01@gmail.com or Susan Bravo: b41793@aol.com. No time to shop? Donate a grocery gift card for a family Christmas dinner. Gifts due Dec. 4.

COFFEE CUP BIBLE STUDY. Weds., 10:00 a.m., Converse House Meeting Room. Discuss *Getting Involved with God: Rediscovering the Old Testament* by Ellen F. Davis. Book available in The Book Center.

CARING AND CRAFTS. Mon., Nov. 21, 9:15 a.m., Converse House Meeting Room. Make afghans, hats, scarves, etc. for Presbyterian Children's Village residents. Maryalice Stoltzfus, 610-527-3909.

PERSPECTIVES IN MUSIC. Mon., Nov. 28, 1:30 p.m., Fine Arts Center. Pianist Vincent Craig, Music Director, Main Line Unitarian Church. Refreshments and fellowship precede program. DeannClancy@hotmail.com or 610-525-8347.

HORIZONS BIBLE STUDY. Wed., Dec. 7, 10:30 a.m., Rosemont Presbyterian Village Ballroom, led by the Rev. Charles Grant. *Confessing the Beatitudes* by Margaret Aymer, Chapter 4. Joyce Malott : okf405@erols.com or 610-525-4469.

Y Group

CHILDCARE AVAILABLE FOR ALL EVENTS AT THE CHURCH. Reserve three days in advance: childcare@bmpc.org or 610-520-8850.

Y GROUP BOOK GROUP. Tues., Nov. 22, 7:30 p.m., home of Maura Doyle. *The Kitchen House* by Kathleen Grissom, the story of an Irish servant girl who violates the order of southern plantation life. Sarah.m.Burke@comcast.net

CHRISTMAS GIFT EXCHANGE. Thurs., Dec. 8, 7:30 p.m., home of Gen McCormack. Come enjoy this Y-Goup tradition; bring a \$15 gift. candacebalch@comcast.net or kgardner01@comcast.net

West Philadelphia

URBAN SUBURBAN BOOK GROUP. Tues., Nov. 15, 7:00 p.m., Overbrook Presbyterian Church, 6376 City Ave., (at Lancaster Ave.) Philadelphia. This month's selection: *The Immortal Life of Henrietta Lacks* by Rebecca Skloot. Sherry. archer19@yahoo.com or 215-473-4327.

Worldwide Ministries

WISH LIST FOR WORLDWIDE MINISTRIES. The SEGA Girls School in Tanzania is developing a poultry farm and Eco-Lodge. If you have skills in poultry farming, nutrition or water management. TraceyDolan@aol.com

INFORMATION MEETING FOR INTERFAITH TRIP TO THE MIDDLE EAST Mon., Nov. 14, 7:30 p.m., Mainline Reform Temple. Questions: SherrHausser@bmpc.org

INTERFAITH TRIP TO ISRAEL AND THE HOLY LAND. May 7-17, 2012. Join us as we travel with members of neighboring congregations to Jerusalem (five nights), Galilee (two nights), Tel Aviv (two nights). SherrHausser@bmpc.org or CarolSchmidt@bmpc.org

Hunger Committee

HUNGER ENVELOPES. Your contributions in the white hunger envelopes in the pews provide food for emergency food cupboards, homeless shelters, and hunger relief organizations.

FOOD BASKETS are located in the church Narthex. Please consider bringing a can to worship each Sunday.

HUNGER FACT. Food insecurity means one's limited ability to secure adequate and nutritious food for an active and healthy lifestyle.

FROZEN TURKEYS AND HAMS. Please bring frozen turkeys and hams to the freezers in the Ministries Center which the Hunger Committee will donate to needy families in our area at this holiday time.