

Worship

Bryn Mawr Presbyterian Church Clergy and Staff

Bryn Mawr Presbyterian Church

SERMON *Are You Really Thirsty?* Susan Rice

† **HYMN 172** My Shepherd Will Supply My Need REGISTRATION

SACRAMENT OF THE LORD'S SUPPER Elizabeth Lovell

THE INVITATION TO COMMUNION

THE GREAT THANKSGIVING

One: The Lord be with you.

All: And also with you.

One: Lift up your hearts.

All: We lift them to the Lord.

One: Let us give thanks to the Lord our God.

All: It is right to give our thanks and praise.

THE LORD'S PRAYER

**Our Father who art in heaven, hallowed be thy name;
thy kingdom come; thy will be done, on earth as it is in
heaven. Give us this day our daily bread. And forgive us
our trespasses, as we forgive those who trespass against
us. And lead us not into temptation, but deliver us from
evil. For thine is the kingdom, and the power, and the
glory forever. Amen.**

THE COMMUNION

*You are invited to come forward, using the center aisle, to partake of
the Lord's Supper. Please break off a piece of bread, dip it in the cup
and return to your seat, using the side aisle. If you prefer gluten- and
casein-free bread, please partake from the center table. If you desire to
be served in your seat, please raise your hand to alert an usher.*

MUSIC AT COMMUNION The Gift of Love Hal Hopson

**PRAYER AFTER COMMUNION
AND COMMON PRAYER** Susan Rice

† **HYMN 335** Though I May Speak O WYLY WYLY

BENEDICTION Susan Rice

POSTLUDE Chanson Triste P. Tchaikovsky

† *Those who are able, please stand.*

MINISTERS

All the members of the church

PASTORAL STAFF

James L. Carter, D.Min.; Interim Pastor, Head of Staff
Sherri A. Hausser, M.Div.; Associate Pastor for Adult Education,
Outreach, and Worldwide Ministries
Robert M. McClellan, M.Div.; Interim Associate Pastor
for Youth and their Families, College Ministries
Susan B. Rice, M.Div.; Associate Pastor for Congregational Life
Christopher (Kit) Schooley, D.Min.; Interim Associate Pastor
for Senior Adults and Pastoral Care
Graham Ford, M.Div.; Pastoral Resident 2008-10
Susan Sytsma Bratt, M.Div.; Pastoral Resident 2008-10
Elizabeth Lovell, M.Div.; Pastoral Resident 2009-11

PROGRAM AND ADMINISTRATIVE STAFF

Donna Barrickman, Membership Director
James A. Batt, Associate Director of Fine Arts Ministries
Carolyn Jervis Beitmann, Director of Children's Ministries
Lorie Benovic, Care Manager
Jeffrey L. Brillhart, Director of Music and Fine Arts
Patsy Cole, Director of the Weekday School
Pete DiRocco, Director of Facilities and Maintenance
Karen Dunkman, Director of the Middleton Center
Lindsey Evans, Youth Activities Director
Kathy Kreider, Parish Nurse
Pam Lloyd, Executive Assistant to the Senior Pastor
Sandy Martin, Young-In-Arts Program Director and Fine Arts Music Assistant
Joanne Solarz, Executive Director of Operations
David Van Houten, Transition into Ministry Program Director
Jane Wilber, Assistant Director of Children's Ministries



Robert C. Murphy, M.Div.; Parish Associate



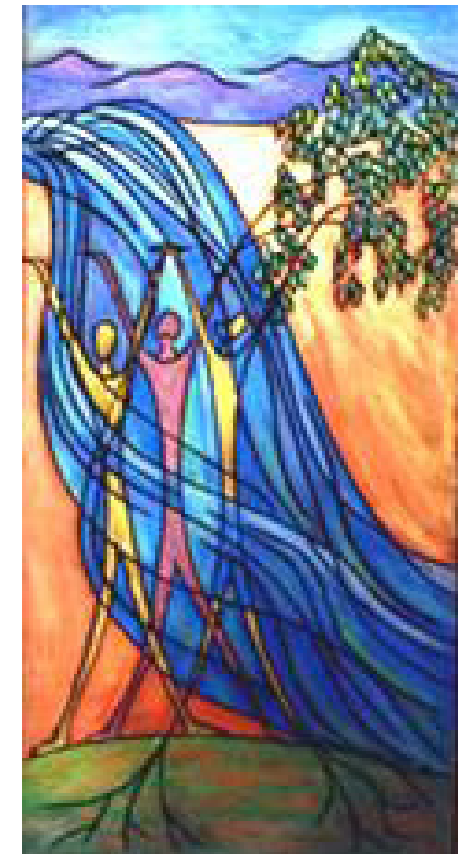
Eugene C. Bay, D.Min.; Pastor Emeritus
Margaret Anne Fohl, D.Min.; Associate Pastor Emerita
George E. Hollingshead, Jr., D.Min.; Associate Pastor Emeritus
David B. Watermulder, Th.M., DD.; Pastor Emeritus

625 Montgomery Avenue
Bryn Mawr, PA 19010
Office Phone – 610.525.2821
Office Fax – 610.525.9476
Website – www.bmpc.org



Main Line Adult Day Center: 610.527.4220
The Middleton Center: 610.525.0766; mail@middletoncenter.org
The Weekday School: 610.525.2821, ext. 8840

SUNDAY, MAY 9, 2010, 8:00 AM, CHAPEL
SIXTH SUNDAY OF EASTER



Living Waters 1
Stained glass window created by Elissa Melarango
of Asheville, NC, owner of Moriah Studio.
Reproduced with permission of the artist.

*As the deer panteth for the water
So my soul longeth after Thee
You alone are my heart's desire
And I long to worship Thee*

~ from *As A Deer*
by A. Martin Nystrom

Worship

FIRST LESSON Acts 16:9-15 (*page 136 in pew Bible*) Elizabeth Lovell (9:30)
Sherri Hausser (11:00)

ANTHEM “The Blue Green Hills of Earth” from *Missa Gaia* Paul Winter
Suzanne DuPlantis, soloist

For the earth, forever turning, for the skies, for every sea, to our Lord we sing,
returning home to our blue green hills of earth. For the mountains, hills and
pastures, in their silent majesty, for all life, for all of Nature, sing we our joyful praise
to Thee. For the sun, for rain and thunder, for the land that makes us free, for the
stars, for all the heavens, sing we our joyful praise to Thee.

COMMON LIFE AND MINISTRY Graham Flord

OFFERTORY ANTHEM For the Beauty of the Earth John Rutter
For the beauty of the earth, for the beauty of the skies, for the love which from our
birth over and around us lies. Lord of all to thee we raise this our joyful gift of praise.
For the beauty of each hour of the day and of the night, hill and vale and tree and
flower, sun and moon and stars of light. Lord of all to thee we raise this our joyful
gift of praise. For the joy of human love, brother, sister, parent child. Friends on
earth and friends above, for all gentle thoughts and mild. Lord of all to thee we raise
this our joyful gift of praise. For each perfect gift of thine to our race so freely given,
graces human and divine, flowers of earth and buds of heaven. Lord of all to thee we
raise this our joyful gift of praise.

† **DOXOLOGY** (*Hymnal 592*)
**Praise God, from whom all blessings flow; praise God, all
creatures here below; praise God above, ye heavenly host; praise
Father, Son, and Holy Ghost. Amen.**

SECOND LESSON Proverbs 31:10-31 (*page 613 in pew Bible*) James L. Carter

SERMON *You Surpass Them All* James L. Carter

† **HYMN 313** Come Down, O Love Divine DOWN AMPNEY

ORDINATION AND INSTALLATION OF NEW OFFICERS

COMMON PRAYER Graham Ford
AND THE LORD’S PRAYER

**Our Father who art in heaven, hallowed be thy name; thy
kingdom come; thy will be done, on earth as it is in heaven. Give
us this day our daily bread. And forgive us our trespasses, as
we forgive those who trespass against us. And lead us not into
temptation, but deliver us from evil. For thine is the kingdom,
and the power, and the glory forever. Amen.**

† **SENDING HYMN 151** Crown Him with Many Crowns DIADEMATA

BENEDICTION WITH CHORAL RESPONSE

POSTLUDE “Final” from *Symphonie III* Louis Vierne

† *Those who are able, please stand.*

Bryn Mawr Presbyterian Church Clergy and Staff

MINISTERS

All the members of the church

PASTORAL STAFF

James L. Carter, D.Min.; Interim Pastor, Head of Staff
Sherri A. Hausser, M.Div.; Associate Pastor for Adult Education,
Outreach, and Worldwide Ministries

Robert M. McClellan, M.Div.; Interim Associate Pastor
for Youth and their Families, College Ministries

Susan B. Rice, M.Div.; Associate Pastor for Congregational Life
Christopher (Kit) Schooley, D.Min.; Interim Associate Pastor

for Senior Adults and Pastoral Care

Graham Ford, M.Div.; Pastoral Resident 2008-10

Susan Sytsma Bratt, M.Div.; Pastoral Resident 2008-10

Elizabeth Lovell, M.Div.; Pastoral Resident 2009-11

PROGRAM AND ADMINISTRATIVE STAFF

Donna Barrickman, Membership Director

James A. Batt, Associate Director of Fine Arts Ministries

Carolyn Jervis Beitmann, Director of Children’s Ministries

Lorie Benovic, Care Manager

Jeffrey L. Brillhart, Director of Music and Fine Arts

Patsy Cole, Director of the Weekday School

Pete DiRocco, Director of Facilities and Maintenance

Karen Dunkman, Director of the Middleton Center

Lindsey Evans, Youth Activities Director

Kathy Kreider, Parish Nurse

Pam Lloyd, Executive Assistant to the Senior Pastor

Sandy Martin, Young-In-Arts Program Director and Fine Arts Music Assistant

Joanne Solarz, Executive Director of Operations

David Van Houten, Transition into Ministry Program Director

Jane Wilber, Assistant Director of Children’s Ministries



Robert C. Murphy, M.Div.; Parish Associate



Eugene C. Bay, D.Min.; Pastor Emeritus

Margaret Anne Fohl, D.Min.; Associate Pastor Emerita

George E. Hollingshead, Jr., D.Min.; Associate Pastor Emeritus

David B. Watermulder, Th.M., DD.; Pastor Emeritus



625 Montgomery Avenue, Bryn Mawr, PA 19010

Office Phone – 610.525.2821

Office Fax – 610.525.9476

Website – www.bmpc.org

Main Line Adult Day Center: 610.527.4220

The Middleton Center: 610.525.0766; mail@middletoncenter.org

The Weekday School: 610.525.2821, ext. 8840

Bryn Mawr Presbyterian Church

SUNDAY, MAY 9, 2010

9:30 & 11:00 AM, SANCTUARY

SIXTH SUNDAY OF EASTER



*Mary asked, “How can this be?” and that is all she
asked, but there are several other questions I believe I
would have asked, such as: “Will Joseph stick around?
Will my parents still love me? Will my friends stand
by me or will I get dragged into town and stoned for
sleeping around? Will the pregnancy go all right? Will
the labor be hard? Will there be someone there to help
me when my time comes? Will I know what to do? You
say the child will be king of Israel, but what about me?
Will I survive his birth? What about me?”*

~Barbara Brown Taylor,
Mothers of God in Gospel Medicine, a collection of sermons

Order of

As we gather for worship, some prepare by greeting each other with words of peace, others with meditation and prayer. Please be respectful of how those around you prepare. Kindly refrain from taking photos or videos and please silence cell phones.



PRELUDE “Cantilène” from *Suite Brève* Jean Langlais

† **CALL TO WORSHIP** Elizabeth Lovell (9:30); Sherri Hausser (11:00)

One: God, be gracious to us and bless us
and make your face to shine upon us.

All: **Let the peoples praise you, O God;
let all the peoples praise you.**

One: The earth has yielded its increase;
may God continue to bless us.

All: **Let the peoples praise you, O God;
let all the peoples praise you.**

One: Let us worship God.

† **OPENING HYMN** 454 Blessed Jesus, at Your Word LIEBSTER JESU

PRAYER OF CONFESSION *in unison* Elizabeth Lovell (9:30); Sherri Hausser (11:00)

Beloved God, whose mercy is everlasting and whose grace endures forever, look with favor upon us as we confess our sin. Lift our minds from earthly things to the vision of your heavenly commonwealth. We revel in self-glory; we delight in vain pursuits; we worship the idols of our base desires. Forgive our shortsighted behavior and reconcile us through Jesus to your eternal will. Amen.

(A moment of silence for personal reflection and confession.)

ASSURANCE OF PARDON

† **GLORIA PATRI** *(Hymnal 579)*

Glory be to the Father and to the Son and to the Holy Ghost; As it was in the beginning, is now and ever shall be, world without end. Amen, Amen.

CHILDREN’S MOMENT (9:30) Elizabeth Lovell

SENDING HYMN (9:30) Go now, Children, with our Blessing

(See Worship Notes section for Sending Hymn)

❖ Worship Notes ❖

Go now, Children, with our Blessing



Go now, children with our blessing, to love and serve the Lord. May God
Bless you, May God guard you, May the light of God shine upon you, and may
God be gracious to you. May the presence of God be with you. May the
pre-sence of God be with you, and give you peace.



IN MEMORIAM

Malin VanAntwerp ~ April 30, 2010



The flowers in the Sanctuary
are given to the Glory of God
and in loving memory of
Teddy Bedrossian



Hunger Envelopes found in the pew racks
may be placed in the offering plates.



Bob Holmes will be playing
the carillon following the worship services.



New hearing devices are available for your use. You will find them in a black suitcase on the shelf in the Narthex. Take an instruction card to learn the simple steps to turn on the device and plug in the earpiece.

Large print resources are available for you at the same location.

Officers being Ordained, Installed or Recognized

Elder Class of 2011

Mary Bassett
Judy Ehrman+
Dianne Giombetti
Bill Hanna, Jr.
Scott Jenkins
Lindsay Johnson
Marge Kennedy+
Oliver Lee (Y-O)
Nancy Page+
Courtenay Lynn Willcox (Y-O)
Tom Willcox, Jr.+

Elder Class of 2012

Steve Bowen+
Carol Cobb-Nettleton+
Laura Getty
Sue Gibbons+
Carol Haldy
David Heaton
Bob Holmes+
Bill Smith
Suzanne VanderVeer

Elder Class of 2013

Jen Bowers (O)
Susan Bravo (O)
Dave Callans+
Pam Fernley (O)
Bob Guthrie (I)
Anita Iyengar+
Susan R. Joseph (O)
Bob Overhiser+
Klaus Volpert (O)

Deacon Class of 2011

Margaret Burton
Pat Cordray+
Pinkie Hamilton+
Andrew Helber (Y-O)
Bill Kemmerer+
Kep Kephart+
Colby Madden
Bruce McMurtrie, Sr.
Betsy Miller+
Patty Murphy+
Cindy Pierce
Cynthia Rugart+
Katie Steck (Y-O)
Cathy Whiteside+

Deacon Class of 2012

Jim Bennett+
Becky Brinks+
Barbara Bugbee
Marlene Edmonds
Joyce Hackman+
Janet Martin+
Jill Miller
Peter Parkinson
Donna Richards-Bank
Brant Rudisill
Susan Ward+
Kathy Wynn* (O)

Deacon Class of 2013

Sharon Burgmayer (O)
Ann Capers+
Jim Carter (O)
Sara Griffin (O)
John Heard+
Drew Hoffner (O)
Jean Lehner (O)
Chris Libson (O)
Bill Matthai (O)
Janney Ryan (O)
Gretchen Steck (O)
Pam Walsh+

Trustees Class of 2011

Anne Buchanan+
Linda Butz+
Barbara Carter
Ron Gregg
Scott Renninger+
Don Street+

Trustees Class of 2012

Brad Baturka
Keith Brinks
Fred Fletcher
Kevin Roller
Bill Thorkelson+
Nancy Wolcott

Trustees Class of 2013

Tom Gadsden (I)
George Henisee (I)
Meg Holdsworth (I)
John MacMurray (I)
John Schneider+
Jeff Snyder+

+ indicates serving a second term; * indicates fulfilling an uncompleted term;
(O) indicates being Ordained; (I) indicates being Installed; (Y) indicates a Youth

The Book Center and Library

CRADLED ALL THE WHILE – THE UNEXPECTED GIFTS OF A MOTHER’S DEATH by Sara J. Corse, \$8. This beautifully crafted memoir in which the author (*a BMPC member*) recounts the story of her mother’s death from cancer. It is for everyone who has lost someone, as well as for those who have lost a part of themselves and are fortunate enough to find it again. Available in The Book Center, located in the Court of the Ministries Center, open Sundays following services and on weekdays, 9:00 am to 4:30 pm.

SNACKS IN THE STACKS. TODAY following the 9:30 am service, Converse House Library. “*Love Ya Mom*” - homemade baked goods like Mom used to make, coffee and conversation. Follow the signs on the Ministries Center ramp to Converse House Parlor. Join us again in the Fall.

Adult Sunday Classes

CLASSES AT 8:00, 9:30 AND 11:00 AM TODAY

EARLY MORNING DISCUSSION. 8:00 am, Conference Room. Join us for stimulating discussion to jump-start your Sunday morning worship experience. You will not be bored!

SPIRITUAL SEARCHING. 9:30 am, Conference Room. Led by the Rev. Sherri Hausser. Why are we here? Why is there suffering? Does prayer really work? Join us for provocative and lively discussions as we explore how God is at work in the world and what role we might play. Each class will focus on a specific topic and begin with a short DVD to set the stage for discussion.

ADULT BIBLE STUDY: PAULINE LETTERS. 11:00 am, Conference Room, led by the Rev. Elizabeth Lovell. The New Testament boasts 13 letters attributed to Paul. Included are some of the most beloved texts in our Reformed tradition as well as some that generate deep controversy. Discover several themes that run throughout these letters in a class that seeks to understand both the historical context in which they were written and how we might read these letters as Christians today.

NEW CLASSES BEGINNING MAY 16:

MANY LIVES, MANY MASTERS. 9:30 am, Conference Room, led by the Rev. Paul MacMurray. Can reincarnation ever be a Christian concept? Join us as we explore this book by prominent psychiatrist Brian L. Weiss, MD, who discusses how past life therapy changed the life of his young patient as well as his own life.

ADULT BIBLE STUDY: REVELATION, 11:00 am, Conference Room. May 16 will be led by Erik Heen from The Lutheran Theological Seminary; May 23, June 6 and 13 will be led by the Rev. Rob McClellan. Revelation is the foremost example of apocalyptic literature in the Bible and perhaps the most misunderstood book in the canon, leading to unintended predictions about the end of the world and charged political stances. Come discover this strange and wonderful book by delving deeply into the text and seeing how this vision for “a new heaven and a new earth” can inform our reading of the entire New Testament.

Adult Weekday Classes

SECOND WEDNESDAY: “STARTING WITH THE BIG PICTURE: THE EVOLUTIONARY EMERGENCE OF BODY, MIND, AND SPIRITUALITY.” May 12, 7:30 pm, Congregational Hall. Religious believers are often seen as negating science and its results in order to make room for God. This lecture by 2010 Metanexus Institute Senior Fellow Dr. Philip Clayton has the opposite goal: to find openings in and through the study of science and spiritual interpretations of human existence.

PREACHER’S BROWN BAG BIBLE STUDY. Tuesday, noon, Conference Room. Bring your lunch and join the upcoming Sunday’s preaching pastor (*usually Dr. Carter*) for a discussion of the scripture that will be used as the basis for the Sunday sermon.

LAY-LED BIBLE STUDY. Wednesdays (*except 2nd Wednesday*), 10:00 am, Fullerton Room, led by Elinor Snyder. Contact: Emily Parkin, emparkin@yahoo.com or 610.664.8380.

TORAH (OLD TESTAMENT) STUDY OF EZEKIEL. Thursdays, 11:00 am, led by Rabbi Franzel, Main Line Reform Temple, Wynnewood. Come for a single session or as often as you like. BMPC contact Phoebe Sheftel, pasheftel@comcast.net or 610-526-1802.

Children's and Family Ministries

BLINK BMPC (LOVE + INSPIRE + NURTURE) KIDS. In order to truly welcome children into this faith community and embrace them on their spiritual journey, all children Kindergarten through Grade 5 begin worship with their families at the 9:30 am service, Sanctuary.

GOD’S GARDEN PLANT SALE. Sunday, May 16, following the 9:30 and 11:00 am services, Front Lawn. Cost: \$3 per plant or \$5 for two plants. This Spring, our BMPC ‘*sprouts*’ have been busy planting and caring for young seedlings to sell and raise funds to buy ingredients for casseroles and sandwiches which they will make for contribution to the church’s hunger relief efforts.

REGISTER NOW FOR VACATION BIBLE CAMP! EGYPT: COME SPEND A WHILE ON THE NILE! Join us for a fun, faith-filled week as we find out what happened to Joseph as he went from Pharaoh’s prison to the palace. Sunday, June 27, 3:00 pm to 5:00 pm and Monday June 28 to Thursday, July 1, 9:00 am to noon. Preschoolers (age 3 by 9.1.09) to 5th Graders. Child care available for younger children of volunteers. **REGISTER/VOLUNTEER NOW ONLINE:** www.bmpc.org. Questions? Contact , VBC director Marcy DelOrefice, marcydelorefice@aol.com or 610.449.0612

FIFTH GRADE STEP UP DAY, MAY 23. Lindsey will meet fifth graders in the Narthex (back of Sanctuary) after BLINK to take them to Gloucester Room. Families, join us in the Crypt at 10:30 am, where we’ll enjoy ice cream and share important information about Youth Ministries. RSVP lydiahaas@bmpc.org before May 20th.

Congregational Care

WALKING WEDNESDAYS. 8:55 am, rear of main parking lot. Members of the wider BMPC community come together for fun and fitness. No sign-up necessary, FREE. Group walks at varied speeds depending upon individual capabilities. kathykreider@bmpc.org or x8832.

WONDERING ABOUT MEDICARE? Sunday, May 16, 9:30 and 11:00 am, Fullerton Room. Kim Andrews from the APPRISE Program will cover information on Parts A, B, and C and discuss how to choose a Medigap Policy and a Medicare D prescription plan. Questions welcome. Register: Lorie Benovic, loriebenovic@bmpc.org or x8833.

NEED A RIDE? We can help with some of your transportation needs. For rides to medical appointments call the church office receptionist, 610.525.2821. Volunteer drivers welcome.

Middleton Center

WALKING THE LABYRINTH IN PRAYER. Thursday, May 13, 2:00 – 8:00 pm, Congregational Hall. Join others in this ancient symbol and prayer form. Quiet music will play and a printed prayer reflection will be available.

TOOLS FOR LIVING WITH CANCER. Tuesday, May 18, 7:00 pm, Witherspoon Parlor. No cost. Drop-ins welcome, but reservations requested, 610.525.0766.

WHAT EVERY PARENT SHOULD KNOW FOR A CHILD’S SMOOTH TRANSITION TO MIDDLE SCHOOL. Sunday, May 23, 2:30-4:00 pm, Witherspoon Parlor, led by Paula Singer, MSS, LSW. Information for parents to help with this key transition. Consider new opportunities for growth and discovery, and ways to reduce stress. Free and open to the public.

Music and Fine Arts

THE CHAMBER ORCHESTRA OF PHILADELPHIA AT BMPC. Sunday, May 9, 7:30 pm. Concert in celebration of The Chamber Orchestra’s new conductor, Dirk Brossé. Program: *Overture to L’italiana in Algeri*, Rossini; *I Loved You*, Brossé; and *Symphony No. 8 in F Major, op. 93*, Beethoven. Donations benefit BMPC’s human services projects in West Philadelphia.

ART EXHIBIT. The vibrant watercolors of Deena Ball are on exhibit in the Conference Room and Witherspoon Parlor through May 23. Ball is an award-winning member of several watercolor societies and holds teaching positions in three area art centers.

Presbyterian Women

PW COFFEE CUP BIBLE STUDY. Wednesday, May 12, 10:00 am, Witherspoon Parlor. Led by the Rev. Susan Rice.

PW CARING & CRAFTS. Monday, May 17, 9:15 am, Witherspoon Parlor. Knit and crochet items for those in need. Maryalice Stoltzfus 610.527.3909.

PW DIMENSIONS IN LITERATURE. Tuesday, May 18, 9:30 am, Witherspoon Parlor. Selected poems by Wallace Stevens led by Eric Lacktman. Eric Johnson johnsone@cpenow.com.

Y GROUP BRUNCH. Tuesday, May 11, 9:15 am, Congregational Hall. Mothers of younger children wrap up our program year with good food and conversation. If you have not received the invite, contact Gaby at gabysnyder@yahoo.com. For childcare: contact Megan Forgie, mmforgie@gmail.com or 610.520.8850 at least one week in advance.

PW PERSPECTIVES IN MUSIC SPRING CONCERT AND LUNCHEON. Tuesday, May 25, 11:30 am, Philadelphia Country Club, 1601 Spring Mill Road, Gladwyne. Pianist Shirley Ling performs works by Chopin, Bernstein and Gershwin followed by lunch. All welcome. Reservation forms available at the BMPC Reception Desk. \$30 payable to BMPC Presbyterian Women. Send to DeAnn Clancy, 1956 Montgomery Avenue, Villanova, PA 19085. Deadline Wednesday, May 19.

Y GROUP BACKPACK PROJECT. Sponsor a child from Presbyterian Children’s Village to help them prepare for a successful school year. Purchase a backpack, fill it with school supplies and drop it off in the Education Building lobby on or before August 6. To obtain a child’s name/age and wish list to help you get started, contact Linda Hauptfuhrer, lindah.w@comcast.net.

Seniors Adults

SENIORS CLUB LUNCH Presents Peter Murphy, to discuss “The Secret Service Today” Wednesday, May 19, 12 noon Gym. Bring a “brown bag” lunch; coffee and sweets provided. Reservations are not necessary. Contact amybauer@bmpc.org or x8821.

Youth Ministries

CONFIRMATION CLASS WHIF EXPO. TODAY, May 9, 9:00 - 11:30 am, Congregational Hall. Session and members may view projects presented by the Confirmands.

CONFIRMATION. 8th graders will be confirmed during the 9:30 am worship service on May 16, followed by a reception in Congregational Hall.

SWELL. A special service looking toward the summer, followed by a summer kickoff cookout (\$5). There will be a special commissioning for those going on summer trips with the church, but ALL are invited to attend! May 23, 4:30, Congregational Hall.

INVITE THE BMPC YOUTH STAFF. Let Rob or Lindsey know if you would like some moral support or a cheering section for an upcoming play, game, graduation, etc. lindseyevans@bmpc.org or robmcclellan@bmpc.org.

YOUTH SUMMER CAMP for rising 6th to rising 12th graders. In the Poconos, August 15-21. Registration deadline: July 31. For more information: lindseyevans@bmpc.org or visit www.bmpc.org/youth.htm.

Homeless Task Force

INTERFAITH HOSPITALITY NETWORK. Guests will arrive on May 16 and stay at BMPC until May 23. If you are able to assist, contact Elizabeth Chesick, 610.642.6381.

Hunger Task Force

THANK YOU to all who participated in our casserole blitz yesterday! With your help, we have delivered over 300 casseroles, surpassing this time last year. Yesterday, we made 150 more! We’re off to a great start, and we thank you.

BASKETS ARE LOCATED in the Narthex and the Chapel entrance to receive donations of canned foods for delivery to emergency food cupboards in Philadelphia and Chester. Bring a can to worship each week to help those in need?

VOLUNTEERS ARE NEEDED to help serve dinners at West Philadelphia area soup kitchens from 5:45 to 7:00 pm on Mondays at the Newman Center, 3720 Chestnut Street or Thursdays at St. Mary’s Church, 3916 Locust Walk. Rick Hamilton, rhamilto@brynmawr.edu.

Outreach

URBAN-SUBURBAN BOOK GROUP. Tuesday, May 18, 7:00 pm, Witherspoon Parlor. This month’s selection: *The Help* by Kathryn Stockett follows the lives of three women in the early 1960s in Jackson, Mississippi. Available in The Book Center.

BMPC TUTORING PROGRAM brings together 120 elementary school children from North Philadelphia and an equal number of students from public and independent high schools in the western suburbs. The Tutoring Program finished its 44th year at BMPC with pizza parties at the end of this April. Support for this program comes from the BMPC’s Outreach Council.

BROAD STREET MINISTRY. To see the life-giving work being done at Broad Street, visit www.broadstreetministry.org. Attend a worship service on Sunday nights at 6:00 pm or attend the “No Holds Barred Bible Study” on Wednesdays, 6:30 pm for discussions you will find both welcoming and rich in content. BMPC has a long history of supporting Broad Street Ministry financially, through volunteers, and in prayer.

West Philadelphia Ministries

WEST PHILADELPHIA CHILDREN’S CHOIR (WPCC). A special learning environment designed to provide a rich and rewarding musical experience for children in grades 3-6 in participating schools who have demonstrated personal accountability in some way. Through musical activities, the WPCC helps foster the personal and social growth of its members and promote their self-esteem, accomplishment and pride. In partnership with WePAC, WPCC is supported in part by a capital campaign gift from BMPC. Volunteers welcome. www.wpcchoir.org

Worldwide Ministries

EMANUEL HOSPITAL ASSOCIATION (EHA). This BMPC mission partner runs 29 community health and development projects in rural India. With a vision for holistic transformation, EHA addresses livelihood issues such as micro-enterprise, safe drinking water, sanitation, hygiene, watershed management, agriculture and literacy. Your contributions to BMPC help support this work. www.eha-health.org



SUPPORTING OUR TROOPS. Please continue to pray for Army Lt. Robert “Kirk” Ryan, son of Steve and Janney Ryan, actively serving in Afghanistan; Army Cpl. Jeffrey VanDusen, son of Nancy and Robin VanDusen, who is on deployment in Iraq; and Air Force Col. Rick Murphy, son-in-law of Roberta and George Hollingshead, actively serving in the Emirates. If you have a loved one serving in the armed forces, contact Louise Huber, 610.658.9651.

WEEKLY CALENDAR: MAY 9 - 16, 2010

Bryn Mawr Presbyterian Church



Our Common Life

Sunday, May 9

Childcare for infants and toddlers, Education Building, 8:15 am - 12:15 pm

- 8:00 am Worship with Communion, Chapel
- 8:00 am Adult Class: Early Morning Discussion, Conference Room
- 9:00 am Confirmation WHIF Expo, Congregational Hall
- 9:30 am Worship, Sanctuary
- 9:30 am BLINK: Grades K-5 begin Worship with families in Sanctuary
- 9:30 am Church School, Rainbows (*age 2 by 9.1.09*) - Lambs (*age 4 by 9.1.09*), Education Building
- 9:30 am Middle School Sunday School, Crypt
- 9:30 am High School Sunday School, Loft
- 9:30 am Adult Class: Spiritual Searching, Conference Room
- 9:45 am Grades K-5 meet in Education Building
- 10:30 am Snacks in the Stacks, Converse House Parlor and Library -
- 11:00 am Worship/Ordination & Installation, Sanctuary
- 11:00 am Art-at-11 for ages 3 and older, Room 201, Education Building
- 11:00 am Adult Class: Bible Study - Pauline Letters, Conference Room
- 7:30 pm Concert by The Chamber Orchestra of Philadelphia, Sanctuary

Monday, May 10

- 9:30 am Cardio Fitness, Gym, Carol Haldy, 610.525.6765
- 7:00 pm Membership Council, Converse House Parlor and Library

Tuesday, May 11

- 9:10 am Yoga for Life, Gym, kcgagnier@verizon.net or 610.952.0622
- 9:15 am Y Group Luncheon, Congregational Hall
- 10:30 am Tai Chi, Gym
- 12:00 pm Preacher's Brown Bag Bible Study, Conference Room
- 1:30 pm Parkinson's Disease Support Group, Gloucester Room and Witherspoon Parlor
- 7:00 pm Session, Congregational Hall
- 7:30 pm Career Counseling, Conference Room, 610.525.0766

Wednesday, May 12

- 9:30 am Cardio Fitness, Gym, Carol Haldy, 610.525.6765
- 9:30 am Senior Men's Discussion Group, Converse House Parlor and Library
- 10:00 am PW Women's Coffee Cup Bible Study, Witherspoon Parlor
- 11:00 am Main Line Meals on Wheels lunch, Congregational Hall
- 7:00 pm Supervision for Stephen Ministers with Care Receivers, Converse House Parlor and Library
- 7:30 pm High School Bible Study, Lindsey's House
- 7:30 pm Science and Spirit Lecture, Congregational Hall

Thursday, May 13

- 8:30 am Morning Prayer Group, Chapel Meeting Room
- 9:15 am Yoga for Life, Gym, kcgagnier@verizon.net or 610.952.0622
- 11:00 am Torah Study, Main Line Reform Temple
- 2:00 pm Labyrinth, Congregational Hall, open until 8:00 pm.
- 7:00 pm Senior Choir, Fine Arts Center
- 7:00 pm Boy Scout Troop 19, Gym

Friday, May 14

- 9:30 am Cardio Fitness, Gym, Carol Haldy, 610.525.6765

Saturday, May 15

- 7:00 am BMPC Men's Group, Converse House Parlor and Library
- 12:15 pm Prime Time, meet at Buckley's Tavern, Centerville, DE

Sunday, May 16

- 8:00 am *Worship with Communion in the Chapel*
The Rev. Susan Sytsma Bratt will preach.
- 9:30 & 11:00 am *Worship with Senior Choir in the Sanctuary*
The Rev. Dr. James L. Carter will preach.
Childcare for infants and toddlers, Education Building, 8:15 am - 12:15 pm
- 8:00 am Worship with Communion, Chapel
- 8:00 am Adult Class: Early Morning Discussion, Conference Room
- 9:30 am Medicare Training Seminar, Gloucester Room
- 9:30 am Worship, Sanctuary
- 9:30 am BLINK: Grades K-5 begin Worship with families in Sanctuary
- 9:30 am Church School, Rainbows (*age 2 by 9.1.09*) - Lambs (*age 4 by 9.1.09*), Education Building
- 9:30 am Confirmation, Congregational Hall | Court
- 9:30 am Adult Class: Many Lives, Many Masters Book Discussion, Conference Room
- 9:45 am Grades K-5 meet in Education Building
- 11:00 am Worship, Sanctuary
- 11:00 am Art-at-11 for ages 3 and older, Room 201, Education Building
- 11:00 am Adult Class: Bible Study - Revelation, Conference Room
- 11:00 am Medicare Training Seminar, Gloucester Room

WELCOME TO BMPC! We are a community of people from many faith backgrounds who come to be encouraged and challenged by God and one another. Learn more about us at the Welcome Center near the main entrance, and join us for fellowship and refreshments in the lobby of the Education Building at 10:30 am or the Court of the Ministries Center at 10:30 am and noon. If you need assistance, ask an usher or anyone wearing a nametag.

SPRING MEMBERSHIP ORIENTATION. Sunday, June 6, 3:00 - 7:00 pm in the Ministries Center. Our staff will acquaint you with this church, our Reformed beliefs, and our denomination as it compares to others. Questions are welcome, dinner is included, and childcare is available with advance notice. To register or for more information, contact donnabarrickman@bmpc.org, x8809. After attending orientation, those who wish to join our community of faith will be welcomed by Session on Tuesday evening, June 8, and received in worship on June 13.

CONFIRMATION CLASS WHIF EXPO. Sunday, May 9, 9:00 - 11:30 am, Congregational Hall. 8th grade Confirmands present projects exemplifying their faith and the knowledge they have accrued. All are welcome.

UNITED NATIONS TOUR. The Peacemaking Committee of the Presbytery invites you on a tour of the United Nations and visit to the Presbyterian UN Office in New York City on Tuesday, May 11. Program includes a tour of the UN offices, presentations of important world issues by knowledgeable interpreters, lunch and a tour of the United Nations. Bus departs from The Church on the Mall (*Plymouth Meeting Mall*) at 8:00 am and will return by 8:00 pm. Cost \$50; evening meal on your own en route home. Contact Rev. David V. Yeaworth, DandGYeaworth@verizon.net to secure reservation.

LEND A HAND ON SUNDAY MORNINGS. Greeters, parkers, ushers and Ministries Center Court hosts all help make BMPC a welcoming place. If you are willing to help with these ministries of hospitality, contact donnabarrickman@bmpc.org or x8809.

VOLUNTEERS OF ALL AGES MAKE THE DIFFERENCE! Join us at Vacation Bible Camp as we have fun exploring EGYPT: Joseph's Journey from Prison to Palace. Sunday, June 27, 3:00 to 5:00 pm and Monday June 28 to Thursday, July 1, 9:00 am - 12:00 noon. Please prayerfully consider where you can share your time and talents as you grow, love and praise with the children. Volunteer opportunities are plentiful; childcare is available for younger children of volunteers. Volunteer now: www.bmpc.org and click on the Egypt VBC logo. Questions? Marcy Delorefice, VBC Director, marcydelorefice@aol.com or 610.449.0612.

CHILDCARE INFORMATION/RESERVATIONS other than on Sunday morning, contact Childcare Coordinator Megan Forgie, mmforgie@gmail.com or 610.520.8850.

BMPC ON-LINE: Visit our website for our complete church calendar, information about our ministries, and audio files of sermons. To receive our weekly electronic newsletter, BMPC Enews, contact kristadellapolla@bmpc.org or add your email address to the fellowship register.